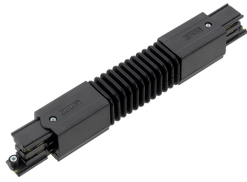


## Global Trac Electrical Accessories

### GLOBAL TRAC PRO FLEX COR BLACK

### XTS23-2



#### Product features

- Global Trac Pro accessory - black, glass fibre reinforced polycarbonate flexible connector that is applicable for three-circuit track systems. Dimensions - 248 x 32 x 33 mm (L x W x H).



### PRODUCT OVERVIEW

|                     |                                |
|---------------------|--------------------------------|
| Product name        | GLOBAL TRAC PRO FLEX COR BLACK |
| Technology          | Accessory                      |
| Housing             | PC Polycarbonate               |
| General application | Retail                         |
| ETIM Class          | EC002556                       |
| E-number SE         | 7402223                        |
| Warranty            | 5 years                        |
| Light colour        | N/A                            |
| Dimmable            | No                             |
| Housing colour      | RAL 9005 - Jet black           |
| IP rating           | IP20                           |
| IK rating           | IK02                           |
| Product EAN number  | 6410014506230                  |

### DATA TABLE

#### General data

|                                  |                                |
|----------------------------------|--------------------------------|
| Product name                     | GLOBAL TRAC PRO FLEX COR BLACK |
| Technology                       | Accessory                      |
| Housing                          | PC Polycarbonate               |
| General application              | Retail                         |
| Operating temperature range (°C) | 0°C...+25°C                    |
| ETIM Class                       | EC002556                       |
| E-number SE                      | 7402223                        |
| Warranty                         | 5 years                        |

#### Optical data

|              |     |
|--------------|-----|
| Light colour | N/A |
|--------------|-----|

#### Electrical data

|                   |          |
|-------------------|----------|
| Mains voltage (V) | 220-240V |
| Dimmable          | No       |

## Global Trac Electrical Accessories GLOBAL TRAC PRO FLEX COR BLACK XTS23-2

### Physical data

|                             |                      |
|-----------------------------|----------------------|
| Housing colour              | RAL 9005 - Jet black |
| IP rating                   | IP20                 |
| IK rating                   | IK02                 |
| Nominal Product Length (mm) | 248                  |
| Nominal Product Width (mm)  | 32                   |
| Nominal Product Height (mm) | 33                   |
| Weight (kg)                 | 0.129                |

### Packaging

|                                       |                |
|---------------------------------------|----------------|
| Single packaging type                 | Carton         |
| Product EAN number                    | 6410014506230  |
| Packaging single length / height (cm) | 24.8           |
| Packaging single width (cm)           | 3.2            |
| Packaging single depth (cm)           | 3.3            |
| DUN14 (outer)                         | 06410014506230 |
| Units per outer package               | 1              |
| Packaging outer length / height (cm)  | 24.8           |
| Packaging outer width (cm)            | 3.2            |
| Packaging outer depth (cm)            | 3.3            |

### Safety data

|                                  |      |
|----------------------------------|------|
| Optimal operating condition (°C) | 0-25 |
| Special purpose lamp             | No   |
| Dry applications use only        | Yes  |

## TECHNICAL DRAWINGS

