

GN 272 | Pivoting connecting clamp bases

Aluminium



- 1
- 2
- 3
- 4
- 5
- 6
- 7
- 8
- 9
- 10
- 11
- 12
- 13
- 14
- 15
- 16
- 17
- 18

MATERIAL

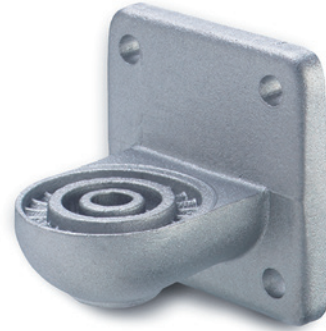
Aluminium, matte finish.

STANDARD EXECUTIONS

- **GN 272-BL-OZ**: natural aluminium.
- **GN 272-BL-MZ**: natural aluminium, with embossed centering ring.
- **GN 272-BL-AV**: natural aluminium, with embossed toothing.
- **GN 272-BL-IV**: natural aluminium, with flush toothing.
- **GN 272-SW-OZ**: aluminium, epoxy resin coating, RAL 9005 black colour.
- **GN 272-SW-MZ**: aluminium, epoxy resin coating, RAL 9005 black colour, with embossed centering ring.
- **GN 272-SW-AV**: aluminium, epoxy resin coating, RAL 9005 black colour, with embossed toothing.
- **GN 272-SW-IV**: aluminium, epoxy resin coating, RAL 9005 black colour, with flush toothing.

FEATURES AND APPLICATIONS

GN 272 bases can be assembled with pivoting connecting clamps GN 274 (see page 1754), GN 276 (see page 1758) or GN 278 (see page 1760).

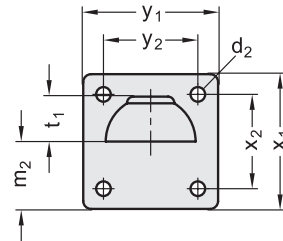
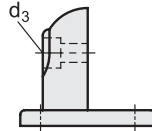
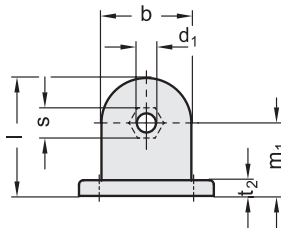
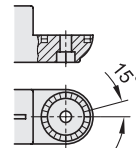
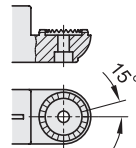
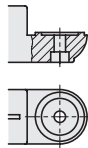


GN 272-OZ

GN 272-MZ

GN 272-AV

GN 272-IV



GN 272-BL

Code	Description	b	d1	d2	d3	l	m1	m2	t1	t2	s	x1	x2	y1	y2	Δ
GN.57131	GN 272-40-OZ-BL	40	8.5	6.5	M8	52.5	32.5	30	20	7	13	60	42	60	42	120
GN.57121	GN 272-40-MZ-BL	40	8.5	6.5	M8	52.5	32.5	30	20	7	13	60	42	60	42	120
GN.57101	GN 272-40-AV-BL	40	8.5	6.5	M8	52.5	32.5	30	20	7	13	60	42	60	42	120
GN.57111	GN 272-40-IV-BL	40	8.5	6.5	M8	52.5	32.5	30	20	7	13	60	42	60	42	110
GN.57171	GN 272-65-OZ-BL	65	10.2	11	M10	84.5	52	52.5	32.5	14	17	105	74	105	74	555
GN.57161	GN 272-65-MZ-BL	65	10.2	11	M10	84.5	52	52.5	32.5	14	17	105	74	105	74	555
GN.57141	GN 272-65-AV-BL	65	10.2	11	M10	84.5	52	52.5	32.5	14	17	105	74	105	74	555
GN.57151	GN 272-65-IV-BL	65	10.2	11	M10	84.5	52	52.5	32.5	14	17	105	74	105	74	535

GN 272-SW

Code	Description	b	d1	d2	d3	l	m1	m2	t1	t2	s	x1	x2	y1	y2	Δ
GN.57136	GN 272-40-OZ-SW	40	8.5	6.5	M8	52.5	32.5	30	20	7	13	60	42	60	42	120
GN.57126	GN 272-40-MZ-SW	40	8.5	6.5	M8	52.5	32.5	30	20	7	13	60	42	60	42	120
GN.57106	GN 272-40-AV-SW	40	8.5	6.5	M8	52.5	32.5	30	20	7	13	60	42	60	42	120
GN.57116	GN 272-40-IV-SW	40	8.5	6.5	M8	52.5	32.5	30	20	7	13	60	42	60	42	110
GN.57176	GN 272-65-OZ-SW	65	10.2	11	M10	84.5	52	52.5	32.5	14	17	105	74	105	74	555
GN.57166	GN 272-65-MZ-SW	65	10.2	11	M10	84.5	52	52.5	32.5	14	17	105	74	105	74	555
GN.57146	GN 272-65-AV-SW	65	10.2	11	M10	84.5	52	52.5	32.5	14	17	105	74	105	74	555
GN.57156	GN 272-65-IV-SW	65	10.2	11	M10	84.5	52	52.5	32.5	14	17	105	74	105	74	535

Connecting clamps