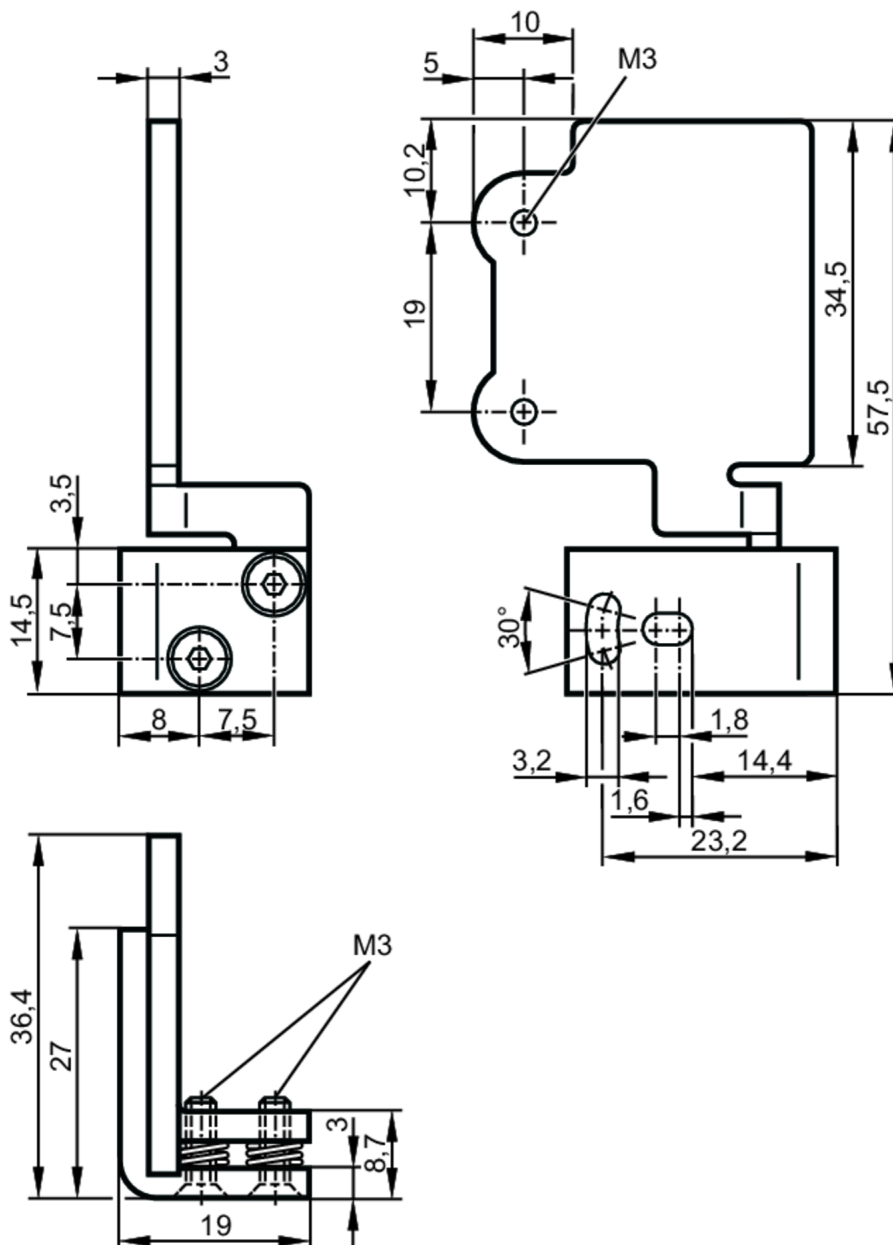


E21226



Fixture for mounting and fine adjustment of laser sensors

SYSTEM COMPONENT OJ LASER



Application

Design

for side lens

Mechanical data

Weight

[g]

62.5

Dimensions

[mm]

57.5 x 36.4 x 19

Materials

stainless steel (1.4301 / 304)

Alignment range

fine adjustment in 2 axes $\pm 2^\circ$

Remarks

Pack quantity

1 pcs.