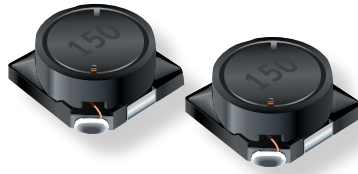


# Product Change Notification

## INDUCTIVE COMPONENTS



February, 2017

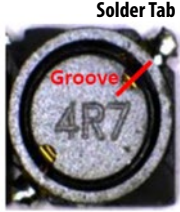

## Bourns® Model SRR7032 and PM7032S Series Shielded Power Inductors

### *Change to Automated Manufacturing Process*

Bourns is changing the inductor core adhesion manufacturing process from manual to automated machine operation to help increase production efficiency and consistency and to help prevent human error. As a result of this manufacturing process change, the inductor core groove may no longer be aligned with the solder tab as it previously was. See Table 1 for more details.

This manufacturing process change will affect the form of the inductor. The fit and function will remain the same and the quality and reliability of the inductor should be enhanced.

**Table 1**

Series	Current (Manual Operation)	Revised (Automated Operation)
SRR7032 PM7032S	Core groove aligned to solder tab 	Core groove may not align to solder tab 

A list of the affected part numbers is on the following page (Table 2).

Implementation dates are as follows:

*Date that manufacturing of existing products will cease: August 26, 2017*

*Date that deliveries of modified products will begin: August 27, 2017*

*First date code using the above changes: 1735*

If you have any questions or need additional information, please feel free to contact [Customer Service/ Inside Sales](#).

**Table 2 - Affected Part Numbers**

<b>SRR7032 Series</b>	<b>PM7032S Series</b>
SRR7032-100M	PM7032S-100M-RC
SRR7032-101M	PM7032S-101M-RC
SRR7032-102M	PM7032S-102M-RC
SRR7032-150M	PM7032S-150M-RC
SRR7032-151M	PM7032S-151M-RC
SRR7032-220M	PM7032S-220M-RC
SRR7032-221M	PM7032S-221M-RC
SRR7032-2R2M	PM7032S-2R2M-RC
SRR7032-330M	PM7032S-330M-RC
SRR7032-331M	PM7032S-331M-RC
SRR7032-3R3M	PM7032S-3R3M-RC
SRR7032-3R3ML	PM7032S-470M-RC
SRR7032-470M	PM7032S-471M-RC
SRR7032-471M	PM7032S-4R7M-RC
SRR7032-4R7M	PM7032S-680M-RC
SRR7032-5R6M	PM7032S-681M-RC
SRR7032-680M	PM7032S-6R8M-RC
SRR7032-681M	
SRR7032-6R8M	