

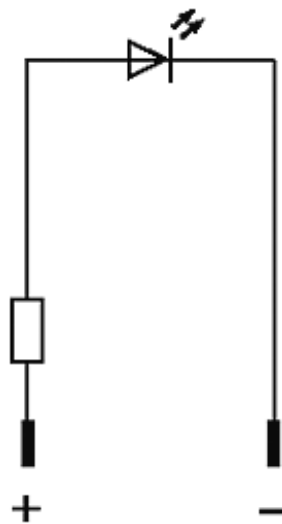
LED-INDICATOR YELLOW

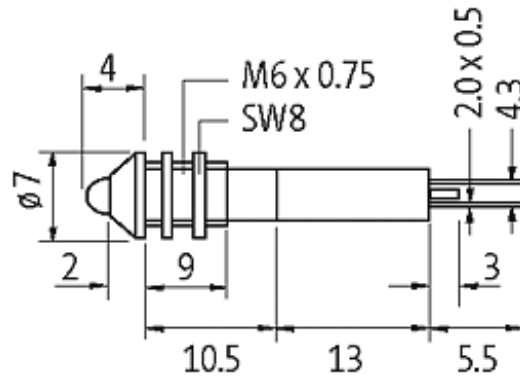
LED 3mm - 24V DC - 20 mA - IP40

(yellow)
24 V DC

[Link to Product](#)

Illustration





Product may differ from Image

Technical Data

| | |
|---|--------------------|
| Operating voltage | 24 V DC $\pm 15\%$ |
| Current consumption | approx. 15 mA |
| Protection acc. to (IEC 60529/EN 60529) | IP40 |

General data

| | |
|---|----------------------|
| Connection | Faston 2.0 x 0.5 mm |
| Housing | Brass, chrome plated |
| LED \varnothing | 3 mm |
| Front panel hole diameter \varnothing | 6 mm |
| Dimensions H x W x D | 7x7x33 mm |
| Temperature range | -40...+70 °C |

Commercial data

| | |
|------------------------|----------|
| country of origin | DE |
| customs tariff number | 85414010 |
| minimum order quantity | 10 |