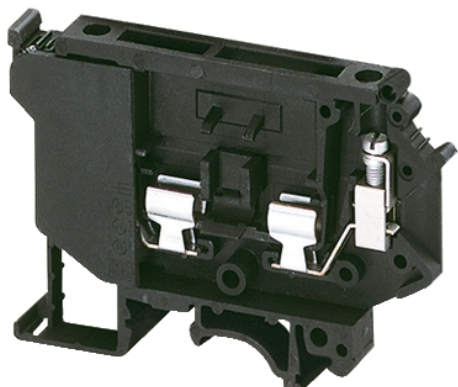


NSYTRV42SF5

SCREW TERMINAL, FUSED, FOR 5X20,5X25,5X30 MM CARTRIDGE FUSE, 2PTS, 4M



Main

Range	Linery
Product name	Linery TR
Product or component type	Terminal block
Device short name	TRV
Device application	Protection
Terminal block type	Fused disconnect
Terminal block level	1
Mounting mode	Clip-on
Nominal cross section	0.01 in ² (4 mm ²)
Length	2.85 in (72.5 mm)
Color	Black
Quantity per set	Set of 50

Complementary

Fuse size	5 x 20 mm
Maximum Width	0.32 in (8.2 mm)
Height	2.22 in (56.5 mm)
Connections - terminals	1 x screw terminal upstream 1 x screw terminal downstream
Number of connections	2
Connection position	Sideways
Number of measurement input	0
Cable cross section	0.00...0.01 In ² (0.2...4 mm ²), flexible without cable end 0.00...0.01 in ² (0.2...4 mm ²), solid or flexible with cable end
Tightening torque	4.43...7.08 lbf.in (0.5...0.8 N.m)
Wire stripping length	0.31 in (8 mm)
Tool type	Connection screwdriver Disconnection screwdriver
[Ue] rated operational voltage	500 V EN/IEC 60947-7-1 600 V cURus 600 V CSA
Line Rated Current	6.3 A EN/IEC 60947-7-1 12 A cURus 6.3 A CSA
Material	Polyamide 6/6: insulating case
Dielectric loss	0.01 at 1 MHz IEC 60250 0.01 at 1 MHz VDE 0303-T4
Dielectric constant	3.7 at 1 MHz
Resistivity	10000 Ω.Cm IEC 60093 10000 Ω.cm VDE 0303-T30
Surface resistance	1000 MOhm IEC 60093 1000 MOhm VDE 0303-T30
Creep resistance	500 CTI (> 400 kB) IEC 60093 500 CTI (> 400 kB) VDE 0303-T30
Flame retardance	V0 0.03 in (0.8 mm) UL 94
Net Weight	0.65 oz (18.3 g)

The information provided in this documentation contains general descriptions and/or technical characteristics of the performance of the products contained herein. This documentation is not intended as a substitute for and is not to be used for determining suitability or reliability of these products for specific user applications. It is the duty of any such user or integrator to perform the appropriate and complete risk analysis, evaluation and testing of the products with respect to the relevant specific application or use thereof. Neither Schneider Electric Industries SAS nor any of its affiliates or subsidiaries shall be responsible or liable for misuse of the information contained herein.

Range compatibility	Prisma G Prisma P Prisma PH Prisma Pack Spacial Kaedra Pragma TeSys
Product compatibility	Spacial enclosures

Environment

Product certifications	CURus CSA EAC
Dielectric strength	1000 V conforming to IEC 60243-1
Ambient air temperature for operation	-40...266 °F (-40...130 °C) IEC 60216-1 -40...266 °F (-40...130 °C) VDE 0304-T21

Ordering and shipping details

Category	21715 - IEC TERMINAL BLOCKS-NSY,AM1,DF6,GK1
Discount Schedule	CP5
GTIN	00785901943655
Nbr. of units in pkg.	50
Package weight(Lbs)	0.04 lb(US) (0.02 kg)
Returnability	Yes
Country of origin	TR

Packing Units

Package 1 Height	0.050 dm
Package 1 width	0.500 dm
Package 1 Length	0.720 dm

Offer Sustainability

Sustainable offer status	Green Premium product
California proposition 65	WARNING: This product can expose you to chemicals including: Lead and lead compounds, which is known to the State of California to cause cancer and birth defects or other reproductive harm. For more information go to www.P65Warnings.ca.gov
REACH Regulation	REACH Declaration
EU RoHS Directive	Compliant EU RoHS Declaration
Mercury free	Yes
RoHS exemption information	Yes
China RoHS Regulation	China RoHS Declaration
Environmental Disclosure	Product Environmental Profile
WEEE	The product must be disposed on European Union markets following specific waste collection and never end up in rubbish bins.

Contractual warranty

Warranty	18 months
----------	-----------