

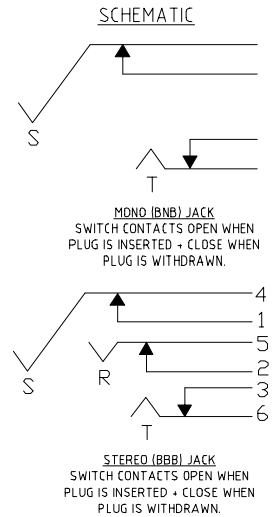
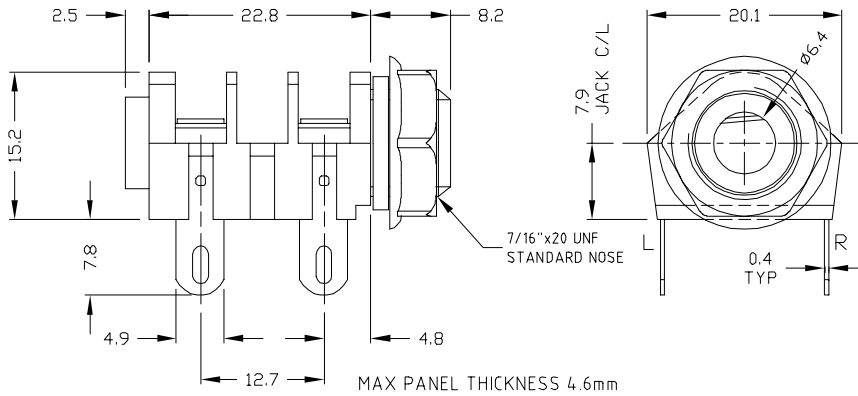
CLIFF

GOLD JACK SOCKETS

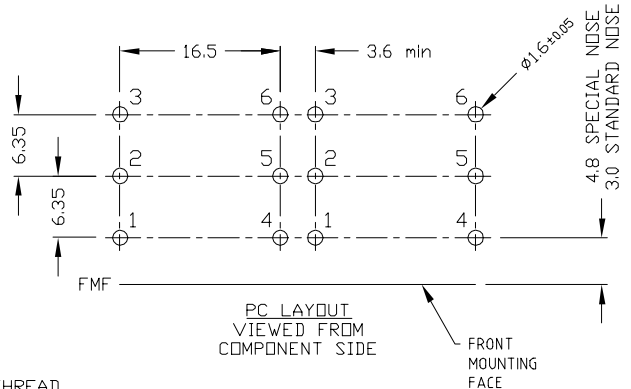
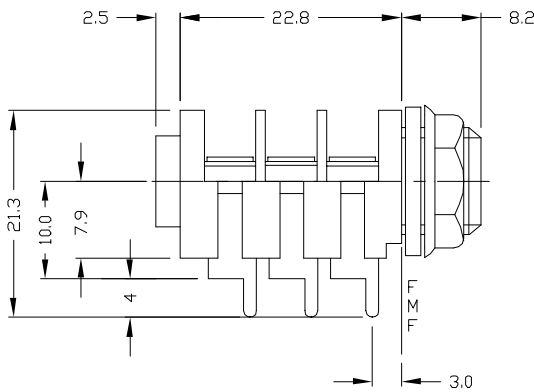
6.35mm JACK SOCKET



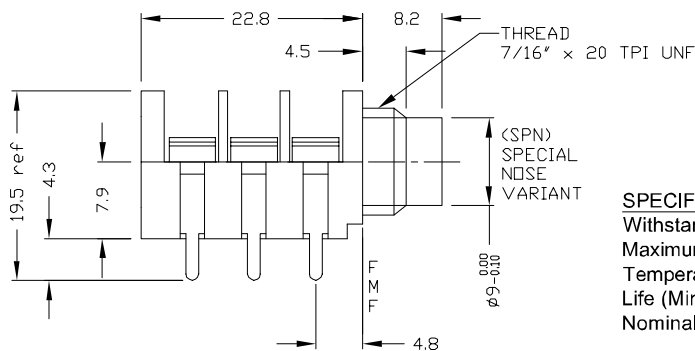
CL11607



CL12327



CL12345



SPECIFICATION
 Withstand voltage: 2000V DC Min.
 Maximum Current: 5A
 Temperature Rating: -10° C to +70° C
 Life (Minimum): 10,000+ Operations
 Nominal Contact Resistance: <50mΩ

DESCRIPTION

CL11607 - Jack Socket Mono S2/BNB Solder Tag

CL12327 - Jack Socket Stereo S2/BBB PC Tag Type A.

CL12345 - Jack Socket Stereo S2/BBB Special Nose PC Tag Type C. No nut or washers.

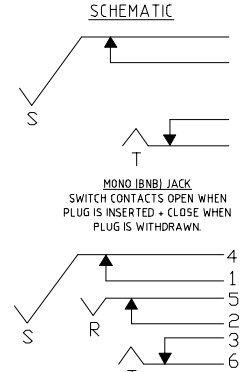
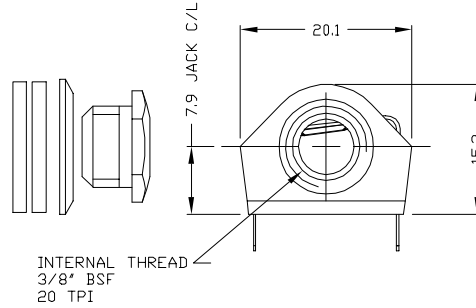
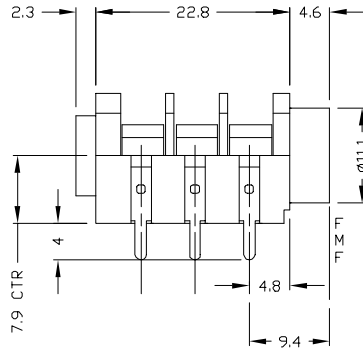
CLIFF

GOLD JACK SOCKETS

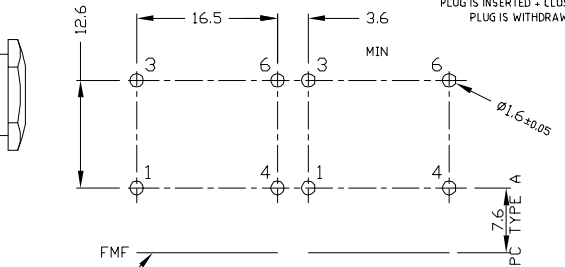
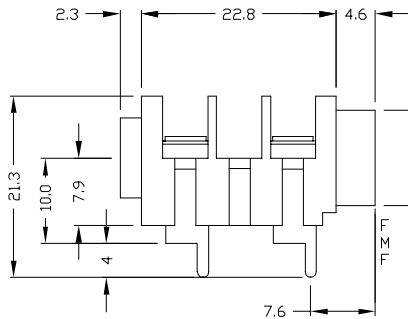
6.35mm JACK SOCKET



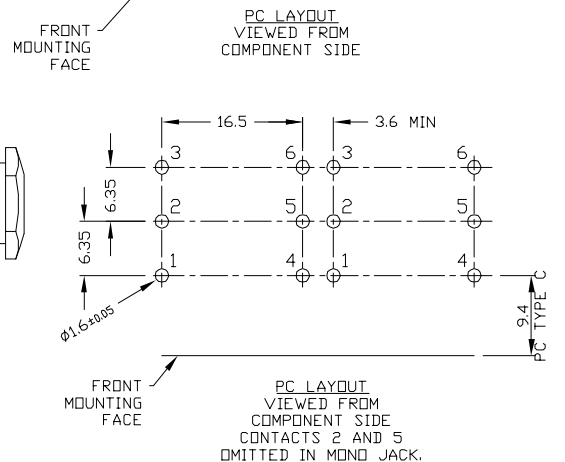
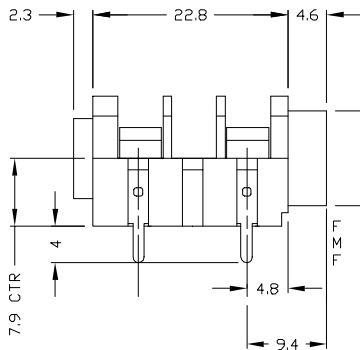
CL13345



CL1308G



CL13106G



DESCRIPTION

- CL13345** - Jack Socket Stereo S4/BBB PC tag type C
- CL1308G** - Jack Socket Mono S4/BNB PC tag type A
- CL13106G** - Jack Socket Mono S4/BNB PC tag type C

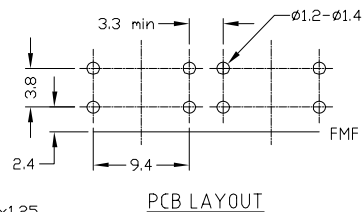
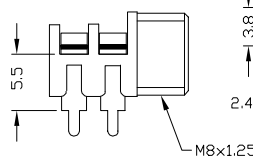
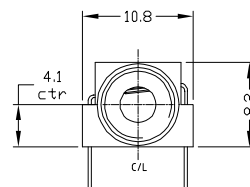
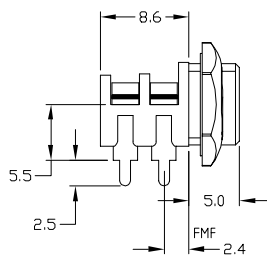
3.5mm JACK SOCKET



CL13845G



CL13843G



DESCRIPTION

- CL13845G** - 3.5mm Jack Socket S6G/BB with nut
- CL13843G** - 3.5mm Jack Socket S6G/BB without nut

CLIFF

GOLD JACK SOCKETS

JACK SOCKET ACCESSORIES



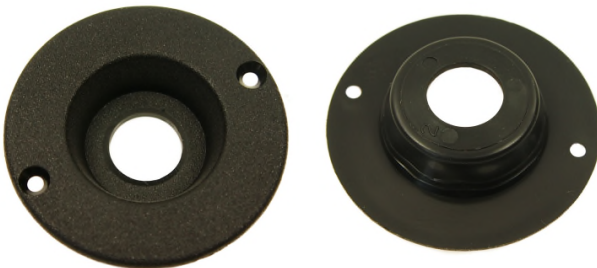
FCR14422 - EMI / RFI SCREEN FOR 6.35mm JACK SOCKETS



CL14218 - BLACK COMBINED NUT/BEZEL FOR S4 TYPE JACK SOCKET



CL14218GY - GREY COMBINED NUT/BEZEL FOR S4 TYPE JACK SOCKET



CL1396 - RECESS PLATE TO ALLOW FLUSH MOUNTING OF 6.35mm JACK SOCKETS

