

8004 C Zyklop Metal Ratchet with switch lever and 1/2" drive , 1/2 inch x 281 mm



The Zyklop Ratchets, 1/2"



EAN: 4013288174062
Part number: 05004064001
Article number: 8004 C

Size: 290x50x40 mm
Weight: 715 g
Country of origin: CZ
Customs tariff number: 82041100



- Convenient direction change thanks to switchover lever
- Extremely slim ratchet with long lever
- Return angle of only 5°
- Very robust without any restrictions on torque
- Secure socket locking

Zyklop Metal ratchet with switchover lever. Slim design for work in even very confined spaces. The 72 fine-pitched teeth allow a small return angle of 5°. Comes with a switchover lever for convenient direction change and secure socket locking function. Forged, full metal ratchet (chrome-molybdenum steel) for particularly high robustness and long service life.

Web link

http://products.wera.de/en/tools_for_the_aerospace_segment_ratchets_the_zyklop_ratchets_1_2_8004_c.html

Wera - 8004 C
05004064001 - 4013288174062

Wera Werkzeuge GmbH
Korzter Straße 21-25
D-42349 Wuppertal
Tel: +49 (0)2 02 / 40 45-0
E-Mail: info@wera.de

The Zyklop Ratchets, 1/2"

The Zyklop Ratchet Metal Switch



Extremely slim. Long leverage. With switch lever.

Zyklop Metal Switch



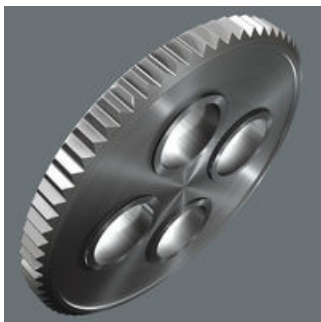
Due to the ever-more confined working environment, space is becoming more and more an issue for the application of ratchets. Our product developers therefore intensively occupied themselves with the issue of confined working spaces, and Wera has now solved this problem. The extremely slim and robust Zyklop Metal ratchet with a long lever was what emerged. When the change in direction needs to be quick, the Zyklop Metal Switch ratchet is the right tool. When the socket must not get lost and a coincidental change of direction has to be avoided at all cost, the Zyklop Metal Push is the correct choice.

Reversible



Switch lever for convenient change of direction.

Small return angle



Fine-pitched with 72 teeth for a return angle of only 5°

Web link

http://products.wera.de/en/tools_for_the_aerospace_segment_ratchets_the_zyklop_ratchets_1_2_8004_c.html

Wera - 8004 C
05004064001 - 4013288174062

Wera Werkzeuge GmbH
Korzter Straße 21-25
D-42349 Wuppertal
Tel: +49 (0)2 02 / 40 45-0
E-Mail: info@wera.de

8004 C Zyklop Metal Ratchet with switch lever and 1/2" drive , 1/2 inch x 281 mm



The Zyklop Ratchets, 1/2"

Further versions in this product family:



mm

mm

mm

05004064001	1/2"	281	34	37
-------------	------	-----	----	----

Web link

http://products.wera.de/en/tools_for_the_aerospace_segment_ratchets_the_zyklop_ratchets_1_2_8004_c.html

Wera - 8004 C

05004064001 - 4013288174062

Wera Werkzeuge GmbH

Korzter Straße 21-25

D-42349 Wuppertal

Tel: +49 (0)2 02 / 40 45-0

E-Mail: info@wera.de