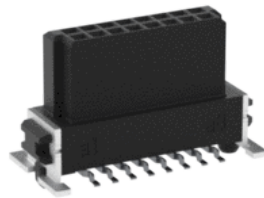


Part-No. 354062-E



# SMC Female Connector

16-pin, vertical, SMT



## Technical Data

Applications	PCB Connectors, ,
Pitch	1.27 mm
Orientation	Vertical
Gender	Female
No. of Pins	16
Termination	SMT
Max Operating Temperature	125 °C
Data Rate	3 Gbit/s
Air- and creepage distance	0.4 mm
Mating Cycles	500
Unmated Stacking Height	9.05 mm

Packaging

Tape and reel 280 pcs

Part-No. 354062-E

## **SMC Female Connector**

**16-pin, vertical, SMT**