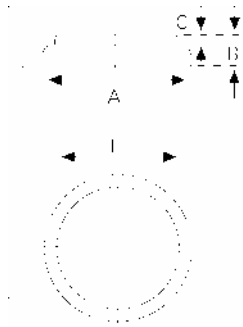


Data Sheet



Type Number 6430
Designation IEC CR 2430
System Li-Manganese dioxide / Organic Electrolyte

UL Recognition:..... MH 13654 (N)
Nominal Voltage 3 V
Typical Capacity C 280 mAh
 Load 5.6 kOhm, at 20°C down to 2 V

Weight (approx.) 4 g
Volume 1,3 ccm
Coding..... Date of Manufacturing Month/Year

Temperature Ranges min max.
 Storage -55°C 70°C
 Discharge -20°C 65°C

Dimensions min max.
 Diameter (A) 24,2 24,5
 Height (B) 2,7 3,0
 Shoulder Diameter[E].....
 Shoulder Height [C].....

Segment Electronic

Main Applications Watch
 Photo
 Electronic

Typical Capacities (at 20°C)

Discharge Type	Load	End Voltage:	2.0 V
Continuous 24h/d, 7d/w Current [µA]:	5600 Ω	Time: Capacity [mAh]: Energy [mWh]:	560 h 280 785

All Data contained herein is for single cells

For battery applications, performance data may vary from single cell data, depending on specific battery configuration

VARTA Microbattery GmbH, Daimlerstr. 1, D-73479 Ellwangen/Jagst
 Tel.: (+49) 7961/921-0, Telefax: (+49) 7961/921-553

Subject to change without prior notice!
 Date of issue: 2004-12-16