

# Desktop Reader EVO



The Desktop Reader EVO is an easy-to-use RFID reader for your USB equipped PC or Laptop. Its USB 2.0 interface guarantees high-speed data transfer. The EVO is a versatile device for various applications.

Special Feature of the Desktop Reader EVO is the modern design, including a Multi-LED illuminated frame, in the HF & LF version. This Desktop Reader is a full RFID read/write device which comes with SDK and Windows based application software.

Desktop Reader EVO is available in UHF, HF, LF as well as LEGIC and TEMIC. Keyboard Emulation or hardware based HID is optional for most versions.

## Features

- Modern Design
- LED illuminated frame (HF & LF)
- Internal antenna
- USB interface
- Optional Keyboard Emulation & HID
- ETSI & FCC approved (UHF)
- SDK included

## Technical Data

### Mechanical Specifications

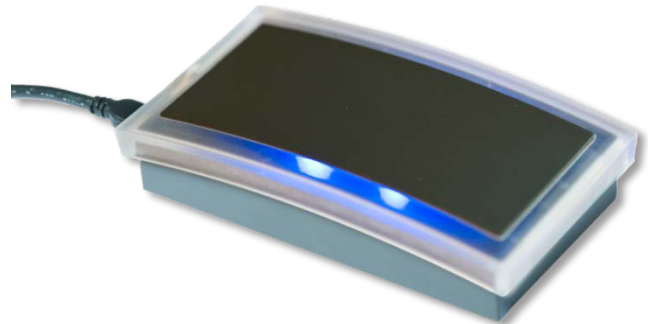
Housing-Material: ABS  
Colour: Anthracite  
Dimensions: 125 x 70 x 26 mm

### Electrical Specifications

Power Supply: 5 VDC , via USB  
Max. Power: 100mW/2dBm (UHF Vers.)  
Operating Systems: Windows XP/7/8, Linux  
Antenna: Integrated  
Interface: USB 2.0, cable length 1.2 m  
Read / Write Speed: Up to 424 kbps

## Applications

- Desktop Reader / Encoders
- Network Access Control
- Point of Sale
- Access Control



### Environmental Conditions

Operating Temperature: 0 °C to +50 °C  
Humidity: 5 % to 95 %

### Features

Signals: Multi-colour LED Illuminated frame (HF & LF only)  
Options: Keyboard Emulation (KEMU)  
Human Interface Device (HID)  
Compliant: CE, RoHS

## Available Versions

Frequency	Supported Standards / Card Types
UHF (ETSI: 865 – 868 MHz) (FCC: 902 – 928 MHz incl. 915 – 928 MHz sub-band)	ISO 18000-6C incl. Class1 Gen2
HF (13.56 MHz)	<p>Read/Write: MIFARE® Classic; Mini; Smart MX; Ultralight SRI4K; SR1X4K; I-Code SLI; M24LR16/64; Tag-it; EM4034 EM4135; ISO 15693</p> <p>APDU command operation: MIFARE DESFireEV1; MIFARE Plus S,X; MIFARE Pro X ISO14443B</p> <p>UID only: All cards compatible with ISO14443 A-3</p>
LF (125 kHz)	<p>Read/Write: EM4x50; HITAG 1, 2, S; TITAN (EM4050)</p> <p>Read only: EM4x02; EM4x05; EM4200; FDX-B; UNIQUE; ZOODIAC</p>
LEGIC	<p>Read/Write: LEGIC Advant; LEGIC Prime</p> <p>UID only: MIFARE DESFire; Infineon SLE, SmartMX; EM4035, Tag-it Infineon SRF55VxxP; ISO18000-3 mode 1; Inside Contactless HID iCLASS; Sony Felica</p> <p>ISO 18092 Passiv Peer-to-Peer Mode – Initiator, NFC Tag 2, 3, 4: ISO18092 NFC</p>
TEMIC	TEMIC 55x7

## Order Codes

Version	Order Code
UHF UHF HID (hardware based)	R-DT-EVO-UHF R-DT-EVO-UHF-HID
HF HF KEMU	R-DT-EVO-HF R-DT-EVO-HF-KEMU
LF LF KEMU	R-DT-EVO-LF R-DT-EVO-LF-KEMU
LEGIC LEGIC KEMU	R-DT-EVO-LEGIC R-DT-EVO-LEGIC-KEMU
TEMIC	R-DT-EVO-TEMIC