

## Fixed jaw for 5-axis design with claws

incl. sliding block and screw

### Version

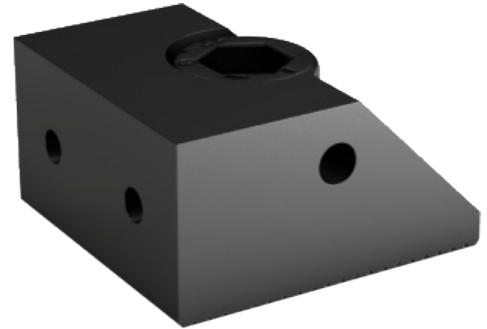
- Fixed jaw for 5-axis design with claws
- Attached using 14-mm T-sliding block with M12 thread

### Advantage

- Fixed jaw bevelled for better accessibility

### Delivery

1 pc. Fixed jaw for 5-axis design with claws, incl. sliding block and screw



<b>Art. No.</b>	<b>28890 605</b>
<b>Taper clamp design</b>	With claw fasteners
<b>Jaws width</b>	40 mm
<b>Jaws thickness</b>	42 mm
<b>Jaws height</b>	22 mm
<b>Fastening thread</b>	M12

### EAN-Code

4050293674163