



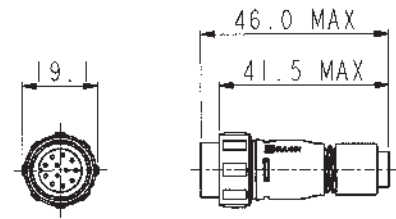
- ⊕ IP68 rating tested at 1.054kg/sq cm (15lb/sq in) 10m depth for 2 weeks
- ⊕ IP69K, Tested in accordance with DIN 40050/Part 9 IP6k9k
- ⊕ 2 and 3 Contact - 8A, 250V rating
- ⊕ 4, 6 and 8 Contact - 5A, 125V rating
- ⊕ 10 and 12 Contact - 1A, 50V rating
- ⊕ 2.5mm contact engagement for electrical integrity 'Scoop proof' contacts
- ⊕ Contact inserts are part of body moulding
- ⊕ Cable range from 3 to 7mm
- ⊕ Overall length (flex + Inline) 80mm
- ⊕ Gold plated contacts
- ⊕ Diameter over coupling ring 19.1mm
- ⊕ Pre-wired, overmoulded cable assemblies
- ⊕ Flex, Inline, Front Panel, Rear Panel and PCB mounting body styles
- ⊕ Plug and Socket versions in all body styles
- ⊕ Flame Retardant moulding material - Polyamide UL94-V0
- ⊕ Contacts supplied separately (except PCB versions)
- ⊕ Sealing caps available to maintain IP68 rating
- ⊕ Secure sealing system
- ⊕ Crimp and solder contacts
- ⊕ PCB mounting connector supplied with contacts pre-loaded
- ⊕ Front and rear panel mounting panel connectors
- ⊕ UL, CSA and VDE approvals
- ⊕ EN60068-2-52 Test Kb Salt Mist (Cyclic) Marine Severity Level 1
- ⊕ Smart options available with EEPROM memory chip

Flex Cable Connector



PX0410

- Mates with Inline or Panel mounting versions PX0401, PX0411, PX0412 & PX0413
- Plug or socket
- 2, 3, 4, 6, 8, 10 or 12 Contact
- Screw locking ring
- Contacts supplied separately

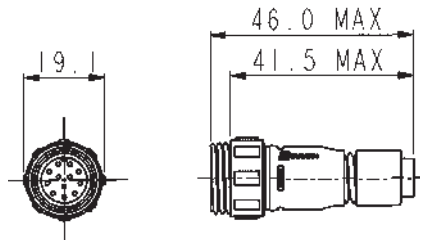


Inline Cable Connector



PX0411

- Mates with Flex Cable connectors PX0400, PX0402 & PX0410
- Plug or socket
- 2, 3, 4, 6, 8, 10 or 12 Contact
- For Inline cable connection
- Contacts supplied separately

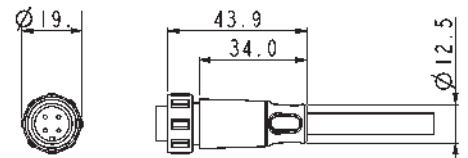


Pre Wired Flex Cable Connector



PX0400

- Overmoulded Flex connector for pre-wired cable assemblies
- Plug or socket
- Cable range 2.5 -9.0mm O/D
- 2, 3, 4, 6, 8, 10 or 12 Contact
- Mates with PX0401 & PX0411 Inline connectors and PX0412 & PX0413 panel mounting connectors

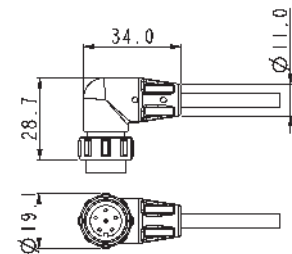


Pre Wired Flex Cable Connector



PX0402

- Right-angled overmoulded Flex connector for pre-wired cable assemblies
- Plug or socket
- Cable range 2.5 -9.0mm O/D
- 2, 3, 4, 6, 8, 10 or 12 Contact
- Mates with PX0401 & PX0411 Inline connectors and PX0412 & PX0413 panel mounting connectors

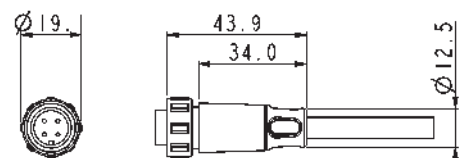


Smart Connector



PXS410

- Overmoulded pre-wired sealed connector
- 4, 6, 8, 10, 12 Contact
- Embedded memory chip through 1 wire EEPROM
- Mates with PX0401 & PX0411 Inline connectors and PX0412 & PX0413 panel mounting connectors

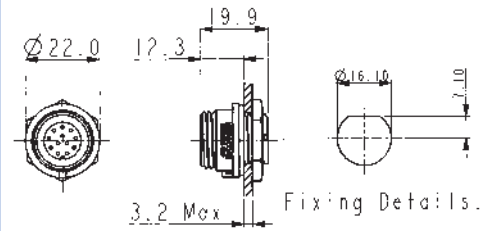


Front Panel Mounting Connector



PX0412

- Mates with Flex Cable connectors PX0410, PX0400 & PX0402
- Single hole fixing
- Contacts supplied separately
- 2, 3, 4, 6, 8, 10 or 12 Contact

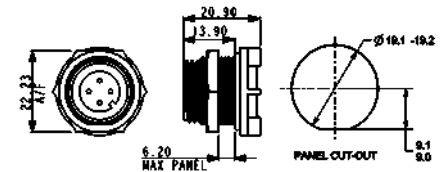


Rear Panel Mounting Connector



PX0413/XXX

- Mates with Flex Cable connector PX0410, PX0400 & PX0402
- Single hole fixing
- Contacts supplied separately
- 2, 3, 4, 6, 8, 10 or 12 Contact

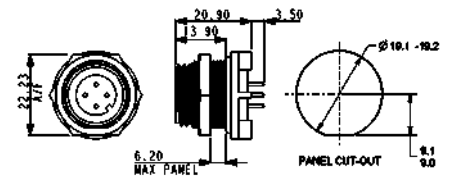


PCB Mounting Connector



PX0413/XXX/PC

- Mates with Flex Cable connector PX0410, PX0400 & PX0402
- PCB Rear Panel mounting
- Straight PC spills
- Supplied with pre-loaded gold plated contacts
- 2, 3, 4, 6, 8, 10 or 12 Contact



Sealing Caps



PX0480 PX0480/1 PX0481 PX0484

- Maintains IP68 Rating of Unmated Connectors
- PX0480: Fits PX0412 (panel mounting)
- PX0480/1: Fits PX0401 & PX0411 (Inline)
- PX0481: Fits PX0400, PX0402 & PX0410 (flex connector)
- PX0484: Fits PX0413 (PCB and rear panel mount)

Gland Packs

| Part No | Description |
|---------|---|
| PX0482 | Pack of 4 pairs cable glands and collets to suit cables from 3.0 to 5.0mm diameter. |
| PX0483 | Pack of 4 pairs cable glands and collets to suit cables from 5.0 to 7.0mm diameter. |

BUCCANEER FOR POWER

400 Series Buccaneer

Specifications



Crimp Contacts

| Contact | Current Rating | Plug Part No. | Socket Part No. | Pack Qty | Cable Acceptance (dia) |
|---------|----------------|---------------|-----------------|----------|------------------------|
| 2, 3 | 8A | SA3350 | SA3349 | 10 | 20 - 24 AWG |
| 4, 6, 8 | 5A | SA3348 | SA3347 | 10 | 22 - 26 AWG |
| 10, 12 | 1A | SA3180 | SA3179 | 10 | 24 - 28 AWG |

Solder Contacts

| Contact | Current Rating | Plug Part No. | Socket Part No. | Pack Qty | Cable Acceptance (dia) |
|---------|----------------|---------------|-----------------|----------|------------------------|
| 2, 3 | 8A | SA3350/1 | SA3349/1 | 10 | 20 - 24 AWG |
| 4, 6, 8 | 5A | SA3348/1 | SA3347/1 | 10 | 22 - 26 AWG |
| 10, 12 | 1A | SA3180/1 | SA3179/1 | 10 | 24 - 28 AWG |

Insertion / Extraction

| | Contacts | Contact Rating | Colour | Part No |
|---------------------------|----------|----------------|--------|---------|
| Insertion/Extraction Tool | 2,3 | 8A | Blue | 13027/2 |
| Insertion/Extraction Tool | 4,6,8 | 5A | Red | 13027/1 |
| Insertion/Extraction Tool | 10,12 | 1A | Green | 13027 |

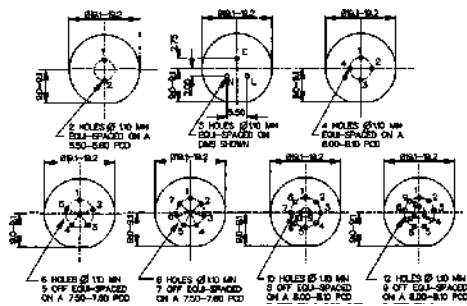
Crimp tools

| | Contacts | Contact Rating | Colour | Part No |
|--|----------|----------------|--------|------------|
| Positioner | 2,3 | 8A | Blue | 14025/8AMP |
| Positioner | 4,6,8 | 5A | Red | 14025/5AMP |
| Positioner | 10,12 | 1A | Green | 14025/1AMP |
| 8 Indent Crimp Tool for use with positioners | | | | 14025 |

PX0413 PCB Contact Layout

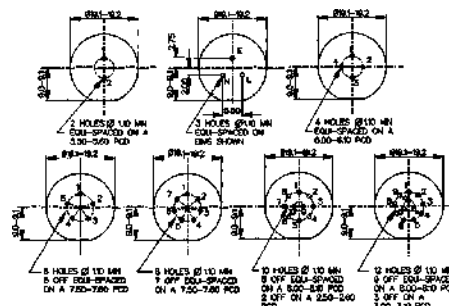
Sockets

Contact numbers viewed from rear of panel

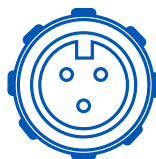


Plugs

Contact numbers viewed from rear of panel



2 Contact
(8 Amp)



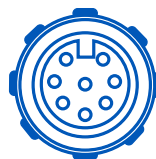
3 Contact
(8 Amp)



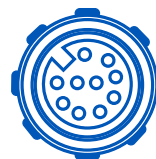
4 Contact
(5 Amp)



6 Contact
(5 Amp)



8 Contact
(5 Amp)



10 Contact
(1 Amp)



12 Contact
(1 Amp)

Electrical:

| | | | |
|------------------------|---------------------------------|------------|-----------|
| No. Contacts: | 2, 3 | 4, 6, 8 | 10, 12 |
| Current Rating: | 8A | 5A | 1A |
| Voltage Rating: | 250V AC/DC | 125V AC/DC | 50V AC/DC |
| Contact Resistance: | <5mΩ | | |
| Insulation Resistance: | >10 ⁶ MΩ (@ 500V DC) | | |
| AC Breakdown voltage: | 2.5kV | | |
| Cycles: | >1000 | | |

| | |
|------------------------|----------------|
| Operating Temperature: | |
| Flex and panel types | -40°C to +80°C |
| Overmoulded | -20°C to +60°C |

Approvals:

| | |
|---------------------------------------|----------|
| UL (Underwriters Laboratory) | E214972 |
| CSA (Canadian Standards Associations) | 1273303 |
| VDE (Verband der Elektrotechnik) | 40002226 |

Overmoulded cable assemblies approvals to customer requirements.

Material:

| | |
|-----------------------|------------------|
| Flex and panel types: | |
| Body Mouldings: | Polyamide |
| Flammability Rating: | UL94V-0 |
| UV Resistance: | To EN 50021:1999 |

| | |
|----------------------|--------------|
| Overmoulded types: | |
| Body Mouldings: | Polyurethane |
| Flammability Rating: | UL94V-HB |

| | |
|-----------|---------------------------|
| Contacts: | Copper alloy, Gold plated |
|-----------|---------------------------|

| | |
|----------|---------|
| O Rings: | Nitrile |
|----------|---------|

| | |
|-----------------------|---------|
| Panel Sealing O Ring: | Nitrile |
|-----------------------|---------|

| | |
|-------------|-----------|
| RoHS | Compliant |
|-------------|-----------|

Smart Connector EEPROM:

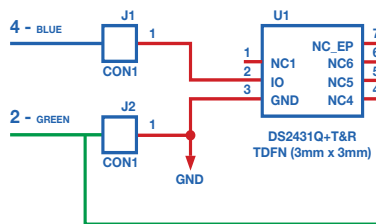
1024 - Bit Memory

1 - Wire

Can be Write Protected

Manufacturer - Maxim Intergrated

Part Number - 0S2431



Mechanical:

| | |
|----------|--|
| Sealing: | IP69K, Tested in accordance with DIN 40050/Part 9 IP6k9k |
|----------|--|

| | |
|--|--|
| | IP68, EN60529:1992+A2:2013 tested @ 1.054kg/sq cm (15lb/sq in) 10m depth for 2 weeks |
|--|--|

| | |
|------------|---|
| Salt Mist: | EN60068-2-52 Test Kb Salt Mist (Cyclic) Marine Severity Level 1 |
|------------|---|

| | |
|-------------------|-------------|
| Cable Acceptance: | 3.0 - 7.0mm |
|-------------------|-------------|

| | |
|------------------------|--|
| Contact Accommodation: | 2, 3 Contact, 20 - 24 AWG 4, 6, 8 Contact, 22 - 26 AWG 10, 12 Contact, 24 - 28 AWG |
|------------------------|--|

| | |
|--------------|-----------------------|
| Termination: | Crimp, solder and PCB |
|--------------|-----------------------|

| | |
|-----------------------------|-----------------------------|
| Insertion/Withdrawal Force: | |
| No. Contacts: | 2 3 4 6 8 10 12 |
| Insertion Force (typ): | 19N 25N 27N 27N 28N 55N 62N |
| Withdrawal Force (typ): | 12N 17N 17N 21N 22N 25N 29N |

| | |
|----------------------|----------------------|
| Tightening Torques: | |
| Panel mount (PX0412) | |
| Rear fixing nut: | 1.0-1.1Nm (9lbf.in.) |
| Panel mount (PX0413) | |
| Front fixing nut: | 1.0-1.1Nm (9lbf.in.) |

| | |
|------------------------|-----|
| Cable Retention force: | |
| 3.0mm dia | 60N |
| 4.0 to 7.0mm dia | 80N |

| | |
|---------------------------|---------|
| Rear panel thread PX0412: | M16x1.5 |
|---------------------------|---------|

| | |
|----------------------|--|
| Panel thread PX0413: | 18.97x26TPI Whitworth form to BS84 med fit |
|----------------------|--|

Dimensions:

Overall dimensions of connectors when mated together

| | |
|---------------|------|
| Flex + Inline | 80mm |
|---------------|------|

| | |
|-------------------------|--------|
| Dia. over coupling ring | 19.1mm |
|-------------------------|--------|

Dia. over coupling ring

| Plug | Wire Colour |
|------|-------------|
| 1 | Red |
| 2 | Green |
| 3 | Yellow |
| 4 | Blue |
| 5 | White |
| 6 | Black |
| 7 | Brown |
| 8 | Violet |
| 9 | Orange |
| 10 | Pink |
| 11 | Turquoise |
| 12 | Grey |



Standard:

| PX041X | / | XX | X | / | XXXX |
|---|----------|---|--|----------|---|
| Body Styles PX0410 = Flex body PX0411 = Inline body PX0412 = Front panel mounting body PX0413 = Rear panel/PCB mounting body | | Number of Contacts 02 03 04 06 08 10 12 | Contact Type P = Plug, S = Socket | | For PX0410 and PX0411 cable connectors - Cable Entry Size: 3035 = 3.0 - 3.5mm (Light Grey) 3540 = 3.5 - 4.0mm (Grey) 4045 = 4.0 - 4.5mm (Green) 4550 = 4.5 - 5.0mm (Red) 5055 = 5.0 - 5.5mm (Yellow) 5560 = 5.5 - 6.0mm (Blue) 6065 = 6.0 - 6.5mm (White) 6570 = 6.5 - 7.0mm (Black) |
| Examples: PX0410/10S/4045 = Flex cable connector, 10 socket contacts with gland and collet for cables between 4.0 and 4.5mm diameter (supplied less contacts). PX0412/08P = Front panel mounting connector, 8 Plug contacts (supplied less contacts). PX0413/06P = Rear panel mounting connector, for 6 Plug contacts (supplied less contacts). PX0413/04P/PC = Rear panel/PCB connector, 4 Plug contacts, PCB mounting (supplied with contacts loaded). | | | | | Cable gland and collet supplied in colour coded pairs. For PX0413 PCB/Rear Panel Mount: PC = Pre-loaded PC Plugs Blank = no Plugs supplied For PX0412 Front Panel Mount: Suffix not required - leave blank |

Pre Wired Variation:

| PX040X | / | XXX | / | XX | / | X |
|--|----------|---|----------|---|----------|---|
| Body Styles PX0400 = Pre Wired Flex Cable Connector PX0402 = Pre Wired Flex Cable Connector - Right angle | | Length 001 = 1m 002 = 2m 003 = 3m ... 015 = 15m | | Number of Contacts 02 03 04 06 08 12 | | Contact Type P = Plug S = Socket |

Smart:

| PXS410 | / | XX | / | XX | / | X |
|--|----------|--|----------|---|----------|---|
| Body Styles PXS410 = Flex body | | Cable length 02 = 2m 03 = 3m 05 = 5m 10 = 10m | | Number of Contacts 04 06 08 10 12 | | Contact Type P = Plug S = Socket |

Examples:

PXS410/02/04/P = Smart flex cable connector, 2m cable to free end, 4 Plug contact