



STANDARD EXECUTIONS

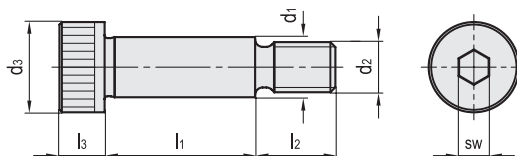
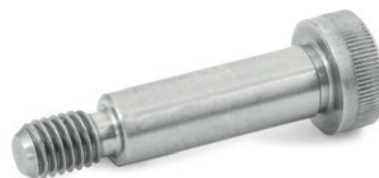
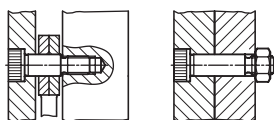
- **ISO 7379**: black-oxide steel class 12.9 (tensile strength 1200 N/mm²). Polished d1 diameter surface.
- **ISO 7379-NI**: AISI 304 stainless steel. Polished d1 diameter surface.

FEATURES AND APPLICATIONS

ISO 7379 shoulder screws with collar maximum tightening torque must not be defined by the steel class resistance, since it is limited by the relatively small bearing points (shoulders) and by the recesses at the transition point from diameter d1 to d2 and d3.

ISO standard deviations: the official ISO standard sheet has the following dimensions for d2 - d1 M5-6,5 / M10-13 / M20-25.

Application examples



ISO 7379-NI

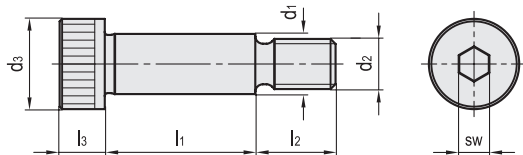


Code	Description	d1	d2	d3	l1 +0.25	l2	l3	sw	Δ
GN.35211	ISO 7379-4-M3-4-NI	4	M3	7	4	27	3	2	1
GN.35212	ISO 7379-4-M3-5-NI	4	M3	7	5	27	3	2	2
GN.35213	ISO 7379-4-M3-6-NI	4	M3	7	6	27	3	2	2
GN.35214	ISO 7379-4-M3-8-NI	4	M3	7	8	27	3	2	2
GN.35215	ISO 7379-4-M3-10-NI	4	M3	7	10	27	3	2	2
GN.35216	ISO 7379-4-M3-12-NI	4	M3	7	12	27	3	2	2
GN.35217	ISO 7379-4-M3-16-NI	4	M3	7	16	27	3	2	3
GN.35228	ISO 7379-5-M4-5-NI	5	M4	9	5	8	4	2.5	3
GN.35229	ISO 7379-5-M4-6-NI	5	M4	9	6	8	4	2.5	3
GN.35230	ISO 7379-5-M4-8-NI	5	M4	9	8	8	4	2.5	4
GN.35231	ISO 7379-5-M4-10-NI	5	M4	9	10	8	4	2.5	4
GN.35232	ISO 7379-5-M4-12-NI	5	M4	9	12	8	4	2.5	4
GN.35233	ISO 7379-5-M4-16-NI	5	M4	9	16	8	4	2.5	5
GN.35234	ISO 7379-5-M4-20-NI	5	M4	9	20	8	4	2.5	5
GN.35235	ISO 7379-5-M4-25-NI	5	M4	9	25	8	4	2.5	6
GN.35236	ISO 7379-5-M4-30-NI	5	M4	9	30	8	4	2.5	7
GN.35251	ISO 7379-6-M5-10-NI	6	M5	10	10	9.5	4.5	3	6
GN.35252	ISO 7379-6-M5-12-NI	6	M5	10	12	9.5	4.5	3	6
GN.35253	ISO 7379-6-M5-16-NI	6	M5	10	16	9.5	4.5	3	6
GN.35254	ISO 7379-6-M5-20-NI	6	M5	10	20	9.5	4.5	3	8
GN.35255	ISO 7379-6-M5-25-NI	6	M5	10	25	9.5	4.5	3	10
GN.35256	ISO 7379-6-M5-30-NI	6	M5	10	30	9.5	4.5	3	10
GN.35257	ISO 7379-6-M5-40-NI	6	M5	10	40	9.5	4.5	3	12
GN.35258	ISO 7379-6-M5-50-NI	6	M5	10	50	9.5	4.5	3	14
GN.35259	ISO 7379-6-M5-60-NI	6	M5	10	60	9.5	4.5	3	14
GN.35261	ISO 7379-8-M6-16-NI	8	M6	13	16	11	5.5	4	6
GN.35262	ISO 7379-8-M6-20-NI	8	M6	13	20	11	5.5	4	10
GN.35263	ISO 7379-8-M6-25-NI	8	M6	13	25	11	5.5	4	12
GN.35264	ISO 7379-8-M6-30-NI	8	M6	13	30	11	5.5	4	14
GN.35265	ISO 7379-8-M6-40-NI	8	M6	13	40	11	5.5	4	15
GN.35266	ISO 7379-8-M6-50-NI	8	M6	13	50	11	5.5	4	19
GN.35267	ISO 7379-8-M6-60-NI	8	M6	13	60	11	5.5	4	20

ISO 7379-NI



Code	Description	d1	d2	d3	l1 +0.25	l2	l3	sw	Δ
GN.35271	ISO 7379-10-M8-16-NI	10	M8	16	16	13	7	5	22
GN.35272	ISO 7379-10-M8-20-NI	10	M8	16	20	13	7	5	25
GN.35273	ISO 7379-10-M8-25-NI	10	M8	16	25	13	7	5	28
GN.35274	ISO 7379-10-M8-30-NI	10	M8	16	30	13	7	5	30
GN.35275	ISO 7379-10-M8-40-NI	10	M8	16	40	13	7	5	35
GN.35276	ISO 7379-10-M8-50-NI	10	M8	16	50	13	7	5	40
GN.35277	ISO 7379-10-M8-60-NI	10	M8	16	60	13	7	5	50
GN.35278	ISO 7379-10-M8-70-NI	10	M8	16	70	13	7	5	60
GN.35279	ISO 7379-10-M8-80-NI	10	M8	16	80	13	7	5	65
GN.35280	ISO 7379-10-M8-90-NI	10	M8	16	90	13	7	5	70
GN.35281	ISO 7379-10-M8-100-NI	10	M8	16	100	13	7	5	80
GN.35286	ISO 7379-12-M10-16-NI	12	M10	18	16	16	9	6	30
GN.35287	ISO 7379-12-M10-20-NI	12	M10	18	20	16	9	6	35
GN.35288	ISO 7379-12-M10-25-NI	12	M10	18	25	16	9	6	40
GN.35289	ISO 7379-12-M10-30-NI	12	M10	18	30	16	9	6	48
GN.35290	ISO 7379-12-M10-40-NI	12	M10	18	40	16	9	6	52
GN.35291	ISO 7379-12-M10-50-NI	12	M10	18	50	16	9	6	65
GN.35292	ISO 7379-12-M10-60-NI	12	M10	18	60	16	9	6	72
GN.35293	ISO 7379-12-M10-70-NI	12	M10	18	70	16	9	6	80
GN.35294	ISO 7379-12-M10-80-NI	12	M10	18	80	16	9	6	90
GN.35295	ISO 7379-12-M10-90-NI	12	M10	18	90	16	9	6	100
GN.35296	ISO 7379-12-M10-100-NI	12	M10	18	100	16	9	6	111
GN.35301	ISO 7379-16-M12-30-NI	16	M12	24	30	18	11	8	93
GN.35302	ISO 7379-16-M12-40-NI	16	M12	24	40	18	11	8	108
GN.35303	ISO 7379-16-M12-50-NI	16	M12	24	50	18	11	8	123
GN.35304	ISO 7379-16-M12-60-NI	16	M12	24	60	18	11	8	140
GN.35305	ISO 7379-16-M12-70-NI	16	M12	24	70	18	11	8	155
GN.35306	ISO 7379-16-M12-80-NI	16	M12	24	80	18	11	8	170
GN.35307	ISO 7379-16-M12-90-NI	16	M12	24	90	18	11	8	186
GN.35308	ISO 7379-16-M12-100-NI	16	M12	24	100	18	11	8	200



ISO 7379

Code	Description	d1 f9	d2	d3	l1 +0.25	l2	l3	sw	Δ
GN.35351	ISO 7379-4-M3-4	4	M3	7	4	7	3	2	1
GN.35352	ISO 7379-4-M3-5	4	M3	7	5	7	3	2	2
GN.35353	ISO 7379-4-M3-6	4	M3	7	6	7	3	2	2
GN.35354	ISO 7379-4-M3-8	4	M3	7	8	7	3	2	2
GN.35355	ISO 7379-4-M3-10	4	M3	7	10	7	3	2	2
GN.35356	ISO 7379-4-M3-12	4	M3	7	12	7	3	2	6
GN.35357	ISO 7379-4-M3-16	4	M3	7	16	7	3	2	3
GN.35358	ISO 7379-4-M3-20	4	M3	7	20	7	3	2	3
GN.35359	ISO 7379-4-M3-25	4	M3	7	25	7	3	2	4
GN.35360	ISO 7379-4-M3-30	4	M3	7	30	7	3	2	4
GN.35368	ISO 7379-5-M4-5	5	M4	9	5	8	4	2.5	3
GN.35369	ISO 7379-5-M4-6	5	M4	9	6	8	4	2.5	1
GN.35370	ISO 7379-5-M4-8	5	M4	9	8	8	4	2.5	4
GN.35371	ISO 7379-5-M4-10	5	M4	9	10	8	4	2.5	1
GN.35372	ISO 7379-5-M4-12	5	M4	9	12	8	4	2.5	4
GN.35373	ISO 7379-5-M4-16	5	M4	9	16	8	4	2.5	5
GN.35374	ISO 7379-5-M4-20	5	M4	9	20	8	4	2.5	5
GN.35375	ISO 7379-5-M4-25	5	M4	9	25	8	4	2.5	7
GN.35376	ISO 7379-5-M4-30	5	M4	9	30	8	4	2.5	7
GN.35377	ISO 7379-5-M4-40	5	M4	9	40	8	4	2.5	10
GN.35161	ISO 7379-6-M5-10	6	M5	10	10	9.5	4.5	3	6
GN.35162	ISO 7379-6-M5-12	6	M5	10	12	9.5	4.5	3	6
GN.35163	ISO 7379-6-M5-16	6	M5	10	16	9.5	4.5	3	10
GN.35164	ISO 7379-6-M5-20	6	M5	10	20	9.5	4.5	3	10
GN.35165	ISO 7379-6-M5-25	6	M5	10	25	9.5	4.5	3	10
GN.35166	ISO 7379-6-M5-30	6	M5	10	30	9.5	4.5	3	10
GN.35381	ISO 7379-6-M5-35	6	M5	10	35	9.5	4.5	3	11
GN.35167	ISO 7379-6-M5-40	6	M5	10	40	9.5	4.5	3	12
GN.35382	ISO 7379-6-M5-45	6	M5	10	45	9.5	4.5	3	13
GN.35168	ISO 7379-6-M5-50	6	M5	10	50	9.5	4.5	3	14
GN.35383	ISO 7379-6-M5-55	6	M5	10	55	9.5	4.5	3	15
GN.35384	ISO 7379-6-M5-60	6	M5	10	60	9.5	4.5	3	16
GN.35385	ISO 7379-6-M5-65	6	M5	10	65	9.5	4.5	3	17
GN.35386	ISO 7379-6-M5-70	6	M5	10	70	9.5	4.5	3	18
GN.35387	ISO 7379-6-M5-80	6	M5	10	80	9.5	4.5	3	20
GN.35169	ISO 7379-8-M6-16	8	M6	13	16	11	5.5	4	14
GN.35170	ISO 7379-8-M6-20	8	M6	13	20	11	5.5	4	15
GN.35171	ISO 7379-8-M6-25	8	M6	13	25	11	5.5	4	16
GN.35172	ISO 7379-8-M6-30	8	M6	13	30	11	5.5	4	19
GN.35388	ISO 7379-8-M6-35	8	M6	13	35	11	5.5	4	20
GN.35173	ISO 7379-8-M6-40	8	M6	13	40	11	5.5	4	21
GN.35389	ISO 7379-8-M6-45	8	M6	13	45	11	5.5	4	23
GN.35174	ISO 7379-8-M6-50	8	M6	13	50	11	5.5	4	24
GN.35390	ISO 7379-8-M6-55	8	M6	13	55	11	5.5	4	26
GN.35175	ISO 7379-8-M6-60	8	M6	13	60	11	5.5	4	28
GN.35391	ISO 7379-8-M6-65	8	M6	13	65	11	5.5	4	32
GN.35392	ISO 7379-8-M6-70	8	M6	13	70	11	5.5	4	34
GN.35393	ISO 7379-8-M6-80	8	M6	13	80	11	5.5	4	38
GN.35394	ISO 7379-8-M6-90	8	M6	13	90	11	5.5	4	42
GN.35395	ISO 7379-8-M6-100	8	M6	13	100	11	5.5	4	47
GN.35176	ISO 7379-10-M8-16	10	M8	16	16	13	7	5	23
GN.35177	ISO 7379-10-M8-20	10	M8	16	20	13	7	5	25
GN.35178	ISO 7379-10-M8-25	10	M8	16	25	13	7	5	29
GN.35179	ISO 7379-10-M8-30	10	M8	16	30	13	7	5	30
GN.35180	ISO 7379-10-M8-35	10	M8	16	35	13	7	5	35
GN.35181	ISO 7379-10-M8-40	10	M8	16	40	13	7	5	41
GN.35397	ISO 7379-10-M8-45	10	M8	16	45	13	7	5	43

ISO 7379

Code	Description	d1 f9	d2	d3	l1 +0.25	l2	l3	sw	Δ
GN.35181	ISO 7379-10-M8-50	10	M8	16	50	13	7	5	45
GN.35398	ISO 7379-10-M8-55	10	M8	16	55	13	7	5	47
GN.35182	ISO 7379-10-M8-60	10	M8	16	60	13	7	5	50
GN.35399	ISO 7379-10-M8-65	10	M8	16	65	13	7	5	53
GN.35400	ISO 7379-10-M8-70	10	M8	16	70	13	7	5	56
GN.35401	ISO 7379-10-M8-80	10	M8	16	80	13	7	5	62
GN.35402	ISO 7379-10-M8-90	10	M8	16	90	13	7	5	68
GN.35403	ISO 7379-10-M8-100	10	M8	16	100	13	7	5	75
GN.35404	ISO 7379-12-M10-16	12	M10	18	16	16	9	6	35
GN.35183	ISO 7379-12-M10-20	12	M10	18	20	16	9	6	39
GN.35184	ISO 7379-12-M10-25	12	M10	18	25	16	9	6	43
GN.35185	ISO 7379-12-M10-30	12	M10	18	30	16	9	6	47
GN.35405	ISO 7379-12-M10-35	12	M10	18	35	16	9	6	51
GN.35186	ISO 7379-12-M10-40	12	M10	18	40	16	9	6	56
GN.35406	ISO 7379-12-M10-45	12	M10	18	45	16	9	6	60
GN.35187	ISO 7379-12-M10-50	12	M10	18	50	16	9	6	65
GN.35407	ISO 7379-12-M10-55	12	M10	18	55	16	9	6	71
GN.35188	ISO 7379-12-M10-60	12	M10	18	60	16	9	6	76
GN.35408	ISO 7379-12-M10-65	12	M10	18	65	16	9	6	75
GN.35409	ISO 7379-12-M10-70	12	M10	18	70	16	9	6	83
GN.35189	ISO 7379-12-M10-80	12	M10	18	80	16	9	6	91
GN.35410	ISO 7379-12-M10-90	12	M10	18	90	16	9	6	96
GN.35411	ISO 7379-12-M10-100	12	M10	18	100	16	9	6	100
GN.35190	ISO 7379-16-M12-25	16	M12	24	25	18	11	8	85
GN.35191	ISO 7379-16-M12-30	16	M12	24	30	18	11	8	93
GN.35412	ISO 7379-16-M12-35	16	M12	24	35	18	11	8	100
GN.35192	ISO 7379-16-M12-40	16	M12	24	40	18	11	8	108
GN.35413	ISO 7379-16-M12-45	16	M12	24	45	18	11	8	116
GN.35193	ISO 7379-16-M12-50	16	M12	24	50	18	11	8	123
GN.35414	ISO 7379-16-M12-55	16	M12	24	55	18	11	8	131
GN.35194	ISO 7379-16-M12-60	16	M12	24	60	18	11	8	140
GN.35415	ISO 7379-16-M12-65	16	M12	24	65	18	11	8	148
GN.35416	ISO 7379-16-M12-70	16	M12	24	70	18	11	8	155
GN.35195	ISO 7379-16-M12-80	16	M12	24	80	18	11	8	170
GN.35417	ISO 7379-16-M12-90	16	M12	24	90	18	11	8	186
GN.35418	ISO 7379-16-M12-100	16	M12	24	100	18	11	8	200
GN.35196	ISO 7379-20-M16-30	20	M16	30	30	22	14	10	169
GN.35419	ISO 7379-20-M16-35	20	M16	30	35	22	14	10	180
GN.35197	ISO 7379-20-M16-40	20	M16	30	40	22	14	10	190
GN.35420	ISO 7379-20-M16-45	20	M16	30	45	22	14	10	205
GN.35198	ISO 7379-20-M16-50	20	M16	30	50	22	14	10	200
GN.35421	ISO 7379-20-M16-55	20	M16	30	55	22	14	10	230
GN.35199	ISO 7379-20-M16-60	20	M16	30	60	22	14	10	234
GN.35422	ISO 7379-20-M16-65	20	M16	30	65	22	14	10	339
GN.35423	ISO 7379-20-M16-70	20	M16	30	70	22	14	10	266
GN.35200	ISO 7379-20-M16-80	20	M16	30	80	22	14	10	293
GN.35424	ISO 7379-20-M16-90	20	M16	30	90	22	14	10	315
GN.35425	ISO 7379-20-M16-100	20	M16	30	100	22	14	10	340
GN.35201	ISO 7379-24-M20-50	24	M20	36	50	27	16	12	340
GN.35426	ISO 7379-24-M20-55	24	M20	36	55	27	16	12	360
GN.35202	ISO 7379-24-M20-60	24	M20	36	60	27	16	12	370
GN.35427	ISO 7379-24-M20-65	24	M20	36	65	27	16	12	400
GN.35428	ISO 7379-24-M20-70	24	M20	36	70	27	16	12	410
GN.35203	ISO 7379-24-M20-80	24	M20	36	80	27	16	12	450
GN.35429	ISO 7379-24-M20-90	24	M20	36	90	27	16	12	480
GN.35204	ISO 7379-24-M20-100	24	M20	36	100	27	16	12	520

