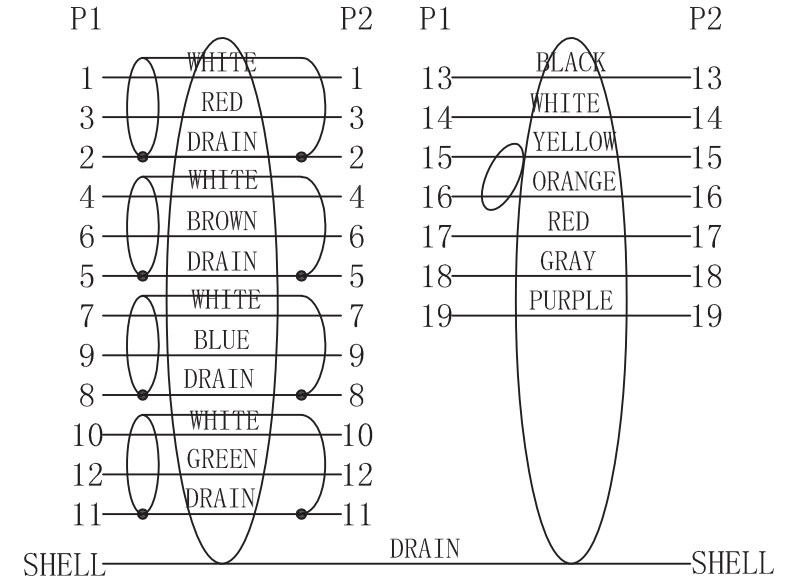


Electrical Test:

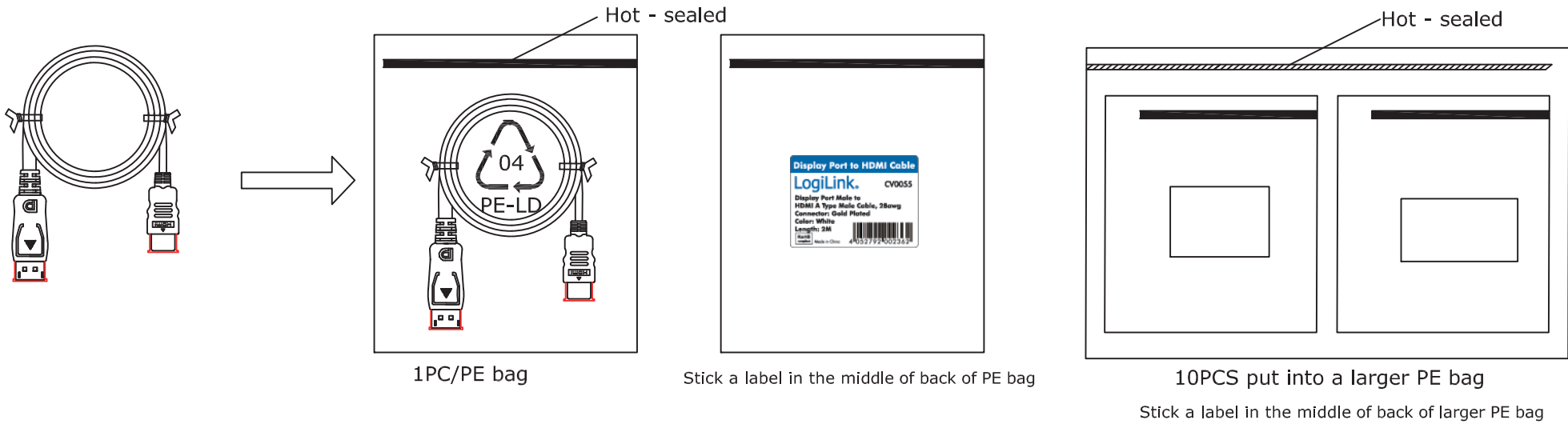
1. 100%Test(Open ,short ,miss wire)
2. Contact Resistance: 2 ohm max.
3. Insulation Resistance: 10M ohm min.
4. Hi-pot:300V DC/10ms

Pin Assignment

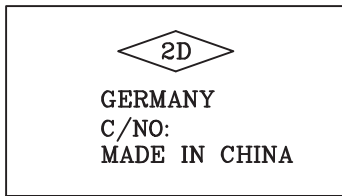


13	A6-0000099	DisplayPort M DUST CAP	1	pcs
12	A6-0000015	HDMI M DUST CAP	1	pcs
11	A10-R075293	H. S. T: ϕ 1.5*35MM BLACK	1	pcs
10	A10-R075133	H. S. T: ϕ 1.5*16mm BLACK	1	pcs
9	A10-R075147	H. S. T: ϕ 1.0*10mm BLACK	8	pcs
8	A10-R065324	H. S. T: ϕ 2.0*8MM BLACK	8	pcs
7	A5-R047011	PE	3	g
6	A0-*****	45P SNOW WHITE PVC	15	g
5	A2-R020044	HDMI M 19P SHELL GOLD PLATED SOLDER INSULATION:BLACK	1	pcs
4	A2-*****	DisplayPotr M ABS UP SHELL SNOW WHITE	1	pcs
3	A6-*****	DisplayPotr M ABS TOP SHELL SNOW WHITE	1	pcs
2	A78-0000273	DP (SHELL GOLD PLATED DP TO HDMI NXP) EMPTY PCB+SMT+SOLDER	1	pcs
1	A2-*****	UL20276 (28AWG*1PR+EAM)*4C+28AWG*1PR+28AWG*5C+AEB 50% AL OD:7.3MM SNOW WHITE	2	m
NO	ITEM	DESCRIPTION	Q'TY	UNIT

REV.	DESCRIPTION		DATE
	TOLERANCE		
.X	.015	.30	
.XX	.010	.10	
.XXX	.005	.05	
DRAWN BY	2direct GmbH		
CHECK BY	TITLE: Display Port Male to HDMI A Type Male Cable		
APPD BY	P/N:	CV0055	
	SCALE	NONE	REV A
	UNIT	MM	A
	DATE	12.03.22	1/2



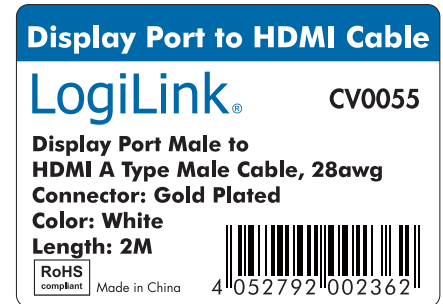
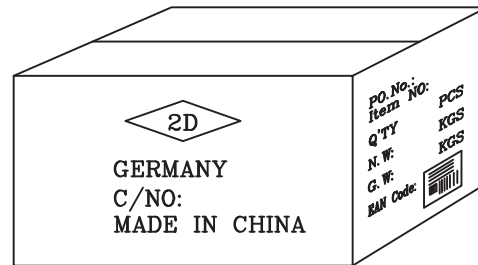
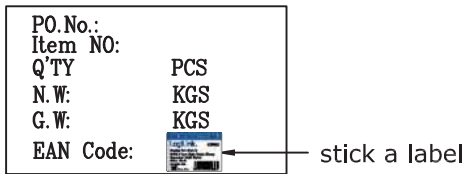
Shipping Mark:



MATTERS NEED ATTENTION:

1. Put a waterproof bag In the carton
2. Top and bottom put a cardboard, sealed by clear tape.

Side Mark:



Pantone 2945C
Black
Size: 70 x 50 mm
R = 2mm

NO	DESCRIPTION	Q' TY	UNIT	REV.	TOLERANCE INCHES M/M	DESCRIPTION	DATE
7	PE xxx*xxx*0.06MM	1/10	pc		.X .015 .30 .XX .010 .10 .XXX .005 .05	2direct GmbH TITLE: Display Port Male to HDMI A Type Male Cable	P/N: CV0055
6	W*L=50*70MM (2945C BLUE) LABEL		pc				
5	Waterproof Bag 850*750*0.06MM	1/xx	pc				
4	Pastdboard B3C 480X300MM	2/xx	pc	DRAWN BY			
3	Carton: K=K 500X320X210MM Marking:2D GERMANY...	1/xx	pc				
2	PE BAG xxx*xxx*0.06MM	1	pc	CHECK BY		SCALE NONE	REV A
1	CABLE TIE	2	pc				
				APPD BY		UNIT MM	
						DATE 12.03.22	2/2