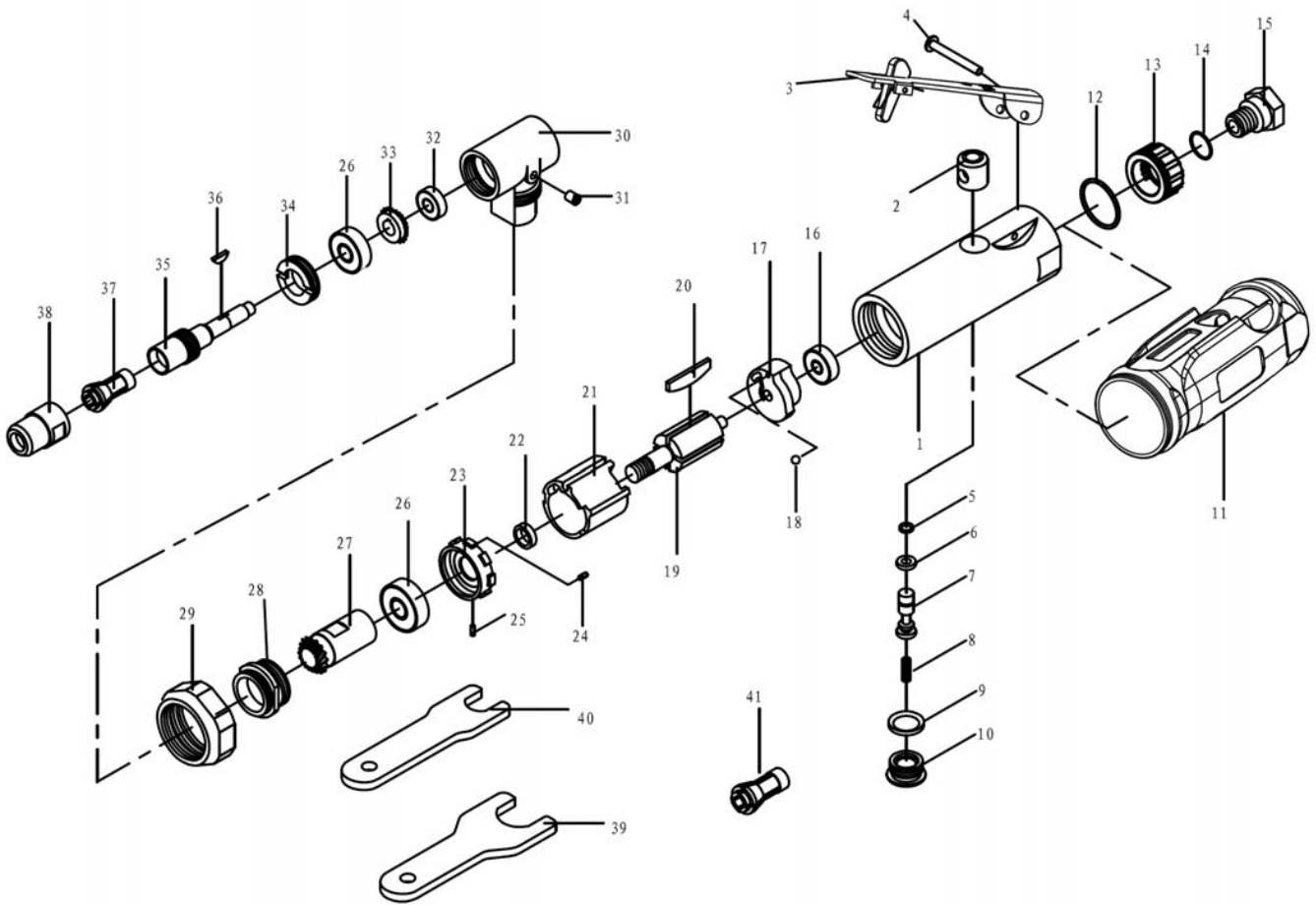




Parts Information:  
Generation Air Angle Die Grinder/Sander  
Kit 42pc  
Model No: GSA674K



**NOTE:** It is our policy to continually improve products and as such we reserve the right to alter data, specifications and component parts without prior notice.

**IMPORTANT:** No liability is accepted for incorrect use of product.

**WARRANTY:** Guarantee is 12 months from purchase date, proof of which will be required for any claim.

Sealey Group, Kempson Way, Suffolk Business Park, Bury St Edmunds, Suffolk. IP32 7AR



01284 757500



01284 703534



sales@sealey.co.uk



www.sealey.co.uk



Parts Information:  
**Generation Air Angle Die Grinder/Sander  
 Kit 42pc**  
**Model No: GSA674K**

1	GSA674.01	HOUSING
2	GSA674.02	VALVE BUSHING
3	GSA674.03	TRIGGER ASS'Y
4	GSA674.V2-04	SCREW
5	GSA674.V2-05	O-RING
6	GSA674.V2-06	O-RING
7	GSA674.07	VALVE STEM
8	GSA674.V2-08	SPRING
9	GSA674.V2-09	O-RING
10	GSA674.V2-10	NUT
11	GSA674.V2-11	HOUSING SLEEVE
12	GSA674.V2-12	O-RING
13	GSA674.15	MUFFLER COVER
14	GSA674.V2-14	O-RING
15	GSA674.V2-15	AIT INLET CONNECTOR
16	B/696ZZ	BEARING 696ZZ
17	GSA674.18	END PLATE
18	SB-2.5	STEEL BALL 2.5mm
19	GSA674.20	ROTOR
20	GSA674.21	ROTOR BLADE
21	GSA674.22	CYLINDER
22	GSA674.23	ROTOR SPACER
23	GSA674.24	FRONT PLATE
24	GSA674.V2-24	STRAIGHT PIN
25	GSA674.V2-25	PIN
26	B/608ZZ	BEARING 608ZZ
27	GSA674.V2-27	BEVEL GEAR
28	GSA674.29	CAP LOCK
29	GSA674.30	THREADED CAP
30	GSA674.V2-30	ANGLE HEAD
31	GSA674.32	OIL INLET
32	B/R4ZZ	BEARING R4ZZ
33	GSA674.V2-33	TRANSMISSION GEAR
34	GSA674.35	RETAINER
35	GSA674.V2-35	DRIVE SHAFT
36	GSA674.V2-36	WOODRUFF KEY
37	GSA674.V2-37	COLLET 1/4"
38	GSA674.V2-38	COLLET NUT
39	GSA674.V2-39	SPANNER (LARGE)
40	GSA674.V2-40	SPANNER (SMALL)
41	GSA674.V2-41	COLLET 1/8"
--	SA719.36	WRENCH 17mm (NOT SHOWN)
--	SA719.35	WRENCH 11mm (NOT SHOWN)
--	SA719.33	6mm COLLET (NOT SHOWN)
--	SA719.32	3mm COLLET (NOT SHOWN)
--	SA719.26	6m PINK GRINDER STONE (NOT SHOWN)
--	SA719.27	6m WHITE GRINDER STONE (NOT SHOWN)

Item	Part No.	Description
--	SA719.28	6m LONG SHAPE GRINDER STONE (NOT SHOWN)
--	SA719.29	6m ROUND GRINDER STONE (NOT SHOWN)
--	SA719.30	6m POINT TIP GRINDER STONE (NOT SHOWN)
--	SA719.21	3m PINK GRINDER STONE (NOT SHOWN)
--	SA719.22	3m WHITE GRINDER STONE (NOT SHOWN)
--	SA719.23	3m LONG SHAPE GRINDER STONE (NOT SHOWN)
--	SA719.24	3m ROUND GRINDER STONE (NOT SHOWN)
--	SA719.25	3m POINT TIP GRINDER STONE (NOT SHOWN)
--	PTCQC50C	QUICK CHANGE PREPARATION PAD 50mm COARSE (NOT SHOWN)
--	PTCQC50F	QUICK CHANGE PREPARATION PAD 50mm FINE (NOT SHOWN)
--	PTCQC50M	QUICK CHANGE PREPARATION PAD 50mm MEDIUM (NOT SHOWN)
--	PTCQC75C	QUICK CHANGE PREPARATION PAD 75mm COARSE (NOT SHOWN)
--	PTCQC75F	QUICK CHANGE PREPARATION PAD 75mm FINE (NOT SHOWN)
--	PTCQC75M	QUICK CHANGE PREPARATION PAD 75mm MEDIUM (NOT SHOWN)
--	PTCQCBP50	QUICK CHANGE BACKING PAD 50mm 1/4"UNC (NOT SHOWN)
--	PTCQCBP75	QUICK CHANGE BACKING PAD 75mm 1/4"UNC (NOT SHOWN)
--	GSA674K.13	SANDING DRUM (1" x 1") No.1 (NOT SHOWN)
--	SA719.10	SANDING DRUM (3/4" x 1") No.2 (NOT SHOWN)
--	GSA674K.15	SANDING DRUM (1/2" x 1/2") No.3 (NOT SHOWN)
--	SA719.12	SANDING DRUM (3/8" x 1/2") No.4 (NOT SHOWN)
--	SA719.13	SANDER ROLL No.1 (1" x 1") 80G (NOT SHOWN)
--	SA719.17	SANDER ROLL (1" x 1") 120G (NOT SHOWN)
--	SA719.14	SANDER ROLL No.2 (3/4" x 1") 80G (NOT SHOWN)
--	SA719.18	SANDER ROLL (3/4" x 1") 120G (NOT SHOWN)
--	SA719.15	SANDER ROLL No.3 (1/2" x 1/2") 80G (NOT SHOWN)
--	SA719.19	SANDER ROLL (1/2" x 1/2") 120G (NOT SHOWN)
--	SA719.16	SANDER ROLL No.4 (3/8" x 5/8") 80G (NOT SHOWN)
--	SA719.20	SANDER ROLL (3/8" x 5/8") 120G (NOT SHOWN)
--	SA719.31	NIPPLE (NOT SHOWN)
--	GSA674K.08	DISC HOLDER (NOT SHOWN)

