

## Active Optical HDMI Cable – Micro HDMI to Micro HDMI

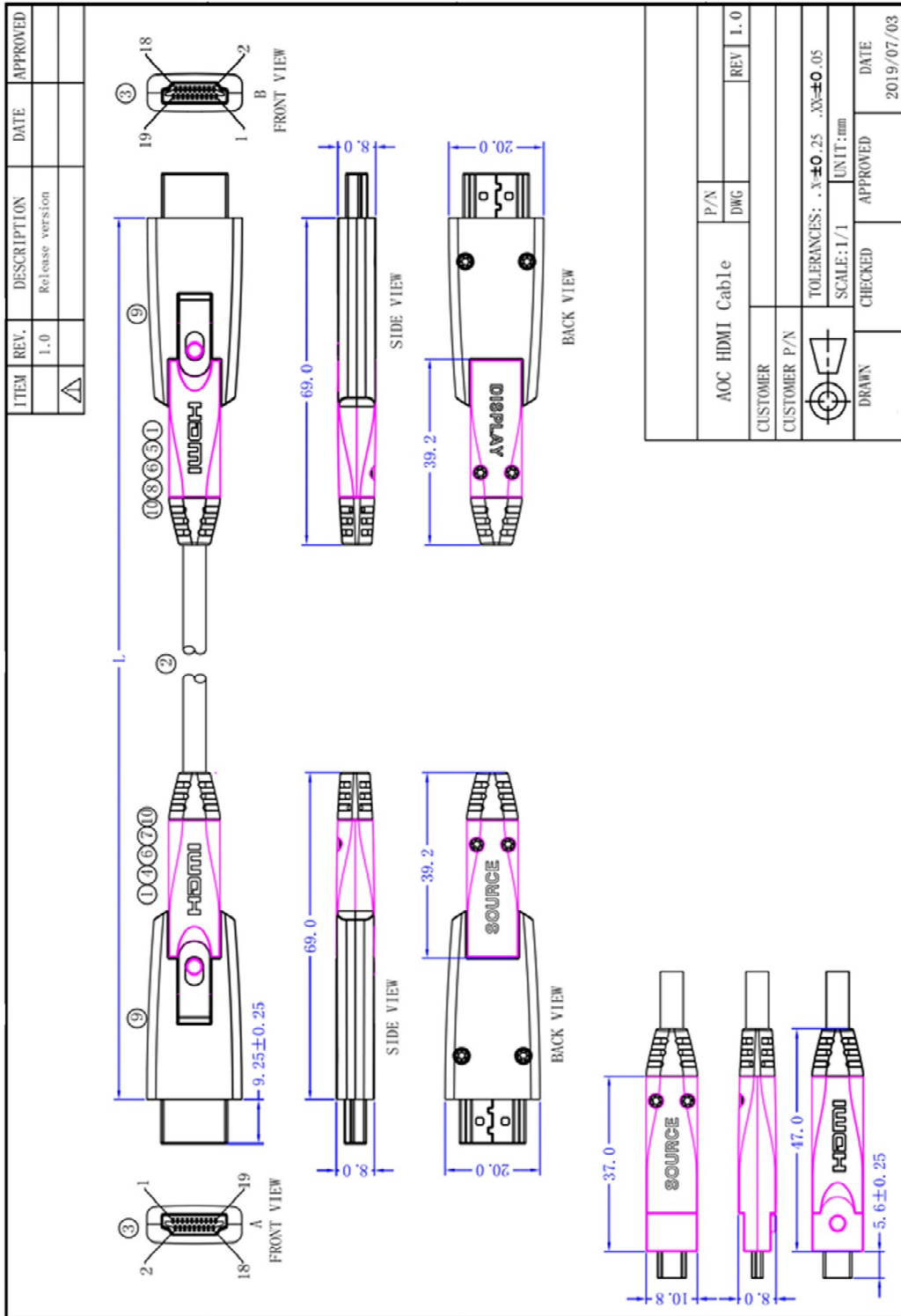


### Features





- Micro HDMI to Micro HDMI, **with adaptors to change to full size Male (A) HDMI at each end**
- No loss of signal – delivering crystal clear digital images instantly
- Up to 200m Maximum Length
- Compatible with HDMI 2.0 standard
- Hybrid optical cable with fiber and copper wire
- Zinc alloy head-shells
- Self-detecting function for EDID information
- Supports computer resolutions to 18Gbps and 4K/60HZ (4:4:4)
- Wire: fibre (50/125um MMF) +7C copper wire OD:4.6- 4.8mm CL2 FT4 PVC Jacket
- 24k Gold plated connectors
- Supports HDCP 2.2

### Product Selector

Length	Part Number	Length	Part number
5M	HHOC-DD5	60M	HHOC-DD60
10M	HHOC-DD10	70M	HHOC-DD70
15M	HHOC-DD15	80M	HHOC-DD80
20M	HHOC-DD20	100M	HHOC-DD100
25M	HHOC-DD25	120M	HHOC-DD120
30M	HHOC-DD30	150M	HHOC-DD150
40M	HHOC-DD40	200M	HHOC-DD200
50M	HHOC-DD50		



CUSTOMER	CUSTOMER P/N	P/N	DWG	REV	1.0
DRAWN	CHECKED	APPROVED			
		TOLERANCES: X ± 0.25 Y ± 0.05			
		SCALE: 1/1		UNIT: mm	
		DATE		2019/07/03	

ITEM	REV.	DESCRIPTION	DATE	APPROVED																																																																																												
	1.0	Release version																																																																																														
																																																																																																
PIN ASSIGNMENT																																																																																																
<table border="1" style="width: 100%; border-collapse: collapse;"> <thead> <tr> <th colspan="2" style="text-align: center;">PIN ASSIGNMENT</th> <th colspan="2" style="text-align: center;">PIN ASSIGNMENT</th> </tr> <tr> <th>TYPE D PIN</th> <th>Signal Name</th> <th>TYPE D PIN</th> <th>TYPE A PIN</th> </tr> </thead> <tbody> <tr><td>3</td><td>TMS DATA2+</td><td>3</td><td>1</td></tr> <tr><td>4</td><td>TMS DATA2 SHIELD</td><td>4</td><td>2</td></tr> <tr><td>5</td><td>TMS DATA2-</td><td>5</td><td>3</td></tr> <tr><td>6</td><td>TMS DATA1+</td><td>6</td><td>4</td></tr> <tr><td>7</td><td>TMS DATA1 SHIELD</td><td>7</td><td>5</td></tr> <tr><td>8</td><td>TMS DATA1-</td><td>8</td><td>6</td></tr> <tr><td>9</td><td>TMS DATA0+</td><td>9</td><td>7</td></tr> <tr><td>10</td><td>TMS DATA0 SHIELD</td><td>10</td><td>8</td></tr> <tr><td>11</td><td>TMS DATA0-</td><td>11</td><td>9</td></tr> <tr><td>12</td><td>TMS CLOCK+</td><td>12</td><td>10</td></tr> <tr><td>13</td><td>TMS CLOCK SHIELD</td><td>13</td><td>11</td></tr> <tr><td>14</td><td>TMS CLOCK-</td><td>14</td><td>12</td></tr> <tr><td>15</td><td>CEC</td><td>15</td><td>13</td></tr> <tr><td>2</td><td>UTILITY</td><td>2</td><td>14</td></tr> <tr><td>17</td><td>SCL</td><td>17</td><td>15</td></tr> <tr><td>18</td><td>SDA</td><td>18</td><td>16</td></tr> <tr><td>16</td><td>DDC/CEC GROUND</td><td>16</td><td>17</td></tr> <tr><td>19</td><td>+5V POWER</td><td>19</td><td>18</td></tr> <tr><td>1</td><td>HOT PLUG DETECT</td><td>1</td><td>19</td></tr> <tr><td>20</td><td>SHELL</td><td>20</td><td>20</td></tr> </tbody> </table>					PIN ASSIGNMENT		PIN ASSIGNMENT		TYPE D PIN	Signal Name	TYPE D PIN	TYPE A PIN	3	TMS DATA2+	3	1	4	TMS DATA2 SHIELD	4	2	5	TMS DATA2-	5	3	6	TMS DATA1+	6	4	7	TMS DATA1 SHIELD	7	5	8	TMS DATA1-	8	6	9	TMS DATA0+	9	7	10	TMS DATA0 SHIELD	10	8	11	TMS DATA0-	11	9	12	TMS CLOCK+	12	10	13	TMS CLOCK SHIELD	13	11	14	TMS CLOCK-	14	12	15	CEC	15	13	2	UTILITY	2	14	17	SCL	17	15	18	SDA	18	16	16	DDC/CEC GROUND	16	17	19	+5V POWER	19	18	1	HOT PLUG DETECT	1	19	20	SHELL	20	20				
PIN ASSIGNMENT		PIN ASSIGNMENT																																																																																														
TYPE D PIN	Signal Name	TYPE D PIN	TYPE A PIN																																																																																													
3	TMS DATA2+	3	1																																																																																													
4	TMS DATA2 SHIELD	4	2																																																																																													
5	TMS DATA2-	5	3																																																																																													
6	TMS DATA1+	6	4																																																																																													
7	TMS DATA1 SHIELD	7	5																																																																																													
8	TMS DATA1-	8	6																																																																																													
9	TMS DATA0+	9	7																																																																																													
10	TMS DATA0 SHIELD	10	8																																																																																													
11	TMS DATA0-	11	9																																																																																													
12	TMS CLOCK+	12	10																																																																																													
13	TMS CLOCK SHIELD	13	11																																																																																													
14	TMS CLOCK-	14	12																																																																																													
15	CEC	15	13																																																																																													
2	UTILITY	2	14																																																																																													
17	SCL	17	15																																																																																													
18	SDA	18	16																																																																																													
16	DDC/CEC GROUND	16	17																																																																																													
19	+5V POWER	19	18																																																																																													
1	HOT PLUG DETECT	1	19																																																																																													
20	SHELL	20	20																																																																																													
<table border="1" style="width: 100%; border-collapse: collapse;"> <thead> <tr> <th colspan="2" style="text-align: center;">PIN ASSIGNMENT</th> <th colspan="2" style="text-align: center;">PIN ASSIGNMENT</th> </tr> <tr> <th>TYPE D PIN</th> <th>Signal Name</th> <th>TYPE D PIN</th> <th>TYPE A PIN</th> </tr> </thead> <tbody> <tr><td colspan="4" style="text-align: center;"><b>HDMI 2.0 PCBA (TX)</b></td></tr> <tr><td>3</td><td>TMS DATA2+</td><td>3</td><td></td></tr> <tr><td>4</td><td>TMS DATA2 SHIELD</td><td>4</td><td></td></tr> <tr><td>5</td><td>TMS DATA2-</td><td>5</td><td></td></tr> <tr><td>6</td><td>TMS DATA1+</td><td>6</td><td></td></tr> <tr><td>7</td><td>TMS DATA1 SHIELD</td><td>7</td><td></td></tr> <tr><td>8</td><td>TMS DATA1-</td><td>8</td><td></td></tr> <tr><td>9</td><td>TMS DATA0+</td><td>9</td><td></td></tr> <tr><td>10</td><td>TMS DATA0 SHIELD</td><td>10</td><td></td></tr> <tr><td>11</td><td>TMS DATA0-</td><td>11</td><td></td></tr> <tr><td>12</td><td>TMS CLOCK+</td><td>12</td><td></td></tr> <tr><td>13</td><td>TMS CLOCK SHIELD</td><td>13</td><td></td></tr> <tr><td>14</td><td>TMS CLOCK-</td><td>14</td><td></td></tr> <tr><td>15</td><td>CEC</td><td>15</td><td></td></tr> <tr><td>2</td><td>UTILITY</td><td>2</td><td></td></tr> <tr><td>17</td><td>SCL</td><td>17</td><td></td></tr> <tr><td>18</td><td>SDA</td><td>18</td><td></td></tr> <tr><td>16</td><td>DDC/CEC GROUND</td><td>16</td><td></td></tr> <tr><td>19</td><td>+5V POWER</td><td>19</td><td></td></tr> <tr><td>1</td><td>HOT PLUG DETECT</td><td>1</td><td></td></tr> <tr><td>20</td><td>SHELL</td><td>20</td><td></td></tr> </tbody> </table>					PIN ASSIGNMENT		PIN ASSIGNMENT		TYPE D PIN	Signal Name	TYPE D PIN	TYPE A PIN	<b>HDMI 2.0 PCBA (TX)</b>				3	TMS DATA2+	3		4	TMS DATA2 SHIELD	4		5	TMS DATA2-	5		6	TMS DATA1+	6		7	TMS DATA1 SHIELD	7		8	TMS DATA1-	8		9	TMS DATA0+	9		10	TMS DATA0 SHIELD	10		11	TMS DATA0-	11		12	TMS CLOCK+	12		13	TMS CLOCK SHIELD	13		14	TMS CLOCK-	14		15	CEC	15		2	UTILITY	2		17	SCL	17		18	SDA	18		16	DDC/CEC GROUND	16		19	+5V POWER	19		1	HOT PLUG DETECT	1		20	SHELL	20	
PIN ASSIGNMENT		PIN ASSIGNMENT																																																																																														
TYPE D PIN	Signal Name	TYPE D PIN	TYPE A PIN																																																																																													
<b>HDMI 2.0 PCBA (TX)</b>																																																																																																
3	TMS DATA2+	3																																																																																														
4	TMS DATA2 SHIELD	4																																																																																														
5	TMS DATA2-	5																																																																																														
6	TMS DATA1+	6																																																																																														
7	TMS DATA1 SHIELD	7																																																																																														
8	TMS DATA1-	8																																																																																														
9	TMS DATA0+	9																																																																																														
10	TMS DATA0 SHIELD	10																																																																																														
11	TMS DATA0-	11																																																																																														
12	TMS CLOCK+	12																																																																																														
13	TMS CLOCK SHIELD	13																																																																																														
14	TMS CLOCK-	14																																																																																														
15	CEC	15																																																																																														
2	UTILITY	2																																																																																														
17	SCL	17																																																																																														
18	SDA	18																																																																																														
16	DDC/CEC GROUND	16																																																																																														
19	+5V POWER	19																																																																																														
1	HOT PLUG DETECT	1																																																																																														
20	SHELL	20																																																																																														
<table border="1" style="width: 100%; border-collapse: collapse;"> <thead> <tr> <th colspan="2" style="text-align: center;">PIN ASSIGNMENT</th> <th colspan="2" style="text-align: center;">PIN ASSIGNMENT</th> </tr> <tr> <th>TYPE D PIN</th> <th>Signal Name</th> <th>TYPE D PIN</th> <th>TYPE A PIN</th> </tr> </thead> <tbody> <tr><td colspan="4" style="text-align: center;"><b>HDMI 2.0 PCBA (RX)</b></td></tr> <tr><td>3</td><td>TMS DATA2+</td><td>3</td><td></td></tr> <tr><td>4</td><td>TMS DATA2 SHIELD</td><td>4</td><td></td></tr> <tr><td>5</td><td>TMS DATA2-</td><td>5</td><td></td></tr> <tr><td>6</td><td>TMS DATA1+</td><td>6</td><td></td></tr> <tr><td>7</td><td>TMS DATA1 SHIELD</td><td>7</td><td></td></tr> <tr><td>8</td><td>TMS DATA1-</td><td>8</td><td></td></tr> <tr><td>9</td><td>TMS DATA0+</td><td>9</td><td></td></tr> <tr><td>10</td><td>TMS DATA0 SHIELD</td><td>10</td><td></td></tr> <tr><td>11</td><td>TMS DATA0-</td><td>11</td><td></td></tr> <tr><td>12</td><td>TMS CLOCK+</td><td>12</td><td></td></tr> <tr><td>13</td><td>TMS CLOCK SHIELD</td><td>13</td><td></td></tr> <tr><td>14</td><td>TMS CLOCK-</td><td>14</td><td></td></tr> <tr><td>15</td><td>CEC</td><td>15</td><td></td></tr> <tr><td>2</td><td>UTILITY</td><td>2</td><td></td></tr> <tr><td>17</td><td>SCL</td><td>17</td><td></td></tr> <tr><td>18</td><td>SDA</td><td>18</td><td></td></tr> <tr><td>16</td><td>DDC/CEC GROUND</td><td>16</td><td></td></tr> <tr><td>19</td><td>+5V POWER</td><td>19</td><td></td></tr> <tr><td>1</td><td>HOT PLUG DETECT</td><td>1</td><td></td></tr> <tr><td>20</td><td>SHELL</td><td>20</td><td></td></tr> </tbody> </table>					PIN ASSIGNMENT		PIN ASSIGNMENT		TYPE D PIN	Signal Name	TYPE D PIN	TYPE A PIN	<b>HDMI 2.0 PCBA (RX)</b>				3	TMS DATA2+	3		4	TMS DATA2 SHIELD	4		5	TMS DATA2-	5		6	TMS DATA1+	6		7	TMS DATA1 SHIELD	7		8	TMS DATA1-	8		9	TMS DATA0+	9		10	TMS DATA0 SHIELD	10		11	TMS DATA0-	11		12	TMS CLOCK+	12		13	TMS CLOCK SHIELD	13		14	TMS CLOCK-	14		15	CEC	15		2	UTILITY	2		17	SCL	17		18	SDA	18		16	DDC/CEC GROUND	16		19	+5V POWER	19		1	HOT PLUG DETECT	1		20	SHELL	20	
PIN ASSIGNMENT		PIN ASSIGNMENT																																																																																														
TYPE D PIN	Signal Name	TYPE D PIN	TYPE A PIN																																																																																													
<b>HDMI 2.0 PCBA (RX)</b>																																																																																																
3	TMS DATA2+	3																																																																																														
4	TMS DATA2 SHIELD	4																																																																																														
5	TMS DATA2-	5																																																																																														
6	TMS DATA1+	6																																																																																														
7	TMS DATA1 SHIELD	7																																																																																														
8	TMS DATA1-	8																																																																																														
9	TMS DATA0+	9																																																																																														
10	TMS DATA0 SHIELD	10																																																																																														
11	TMS DATA0-	11																																																																																														
12	TMS CLOCK+	12																																																																																														
13	TMS CLOCK SHIELD	13																																																																																														
14	TMS CLOCK-	14																																																																																														
15	CEC	15																																																																																														
2	UTILITY	2																																																																																														
17	SCL	17																																																																																														
18	SDA	18																																																																																														
16	DDC/CEC GROUND	16																																																																																														
19	+5V POWER	19																																																																																														
1	HOT PLUG DETECT	1																																																																																														
20	SHELL	20																																																																																														
<table border="1" style="width: 100%; border-collapse: collapse;"> <thead> <tr> <th>ITEM</th> <th>REV.</th> <th>DESCRIPTION</th> <th>DATE</th> <th>APPROVED</th> </tr> </thead> <tbody> <tr> <td>10</td> <td>G</td> <td>SR, BLACK PVC 45P</td> <td></td> <td></td> </tr> <tr> <td>2</td> <td>SET</td> <td>ADAPTOR METAL SHELL</td> <td></td> <td></td> </tr> <tr> <td>1</td> <td>PCS</td> <td>METAL SHELL "DISPLAY" LOGO</td> <td></td> <td></td> </tr> <tr> <td>1</td> <td>PCS</td> <td>METAL SHELL "SOURCE" LOGO</td> <td></td> <td></td> </tr> <tr> <td>2</td> <td>PCS</td> <td>METAL SHELL "HDMI" LOGO</td> <td></td> <td></td> </tr> <tr> <td>1</td> <td>PCS</td> <td>HDMI 2.0 PCBA RX</td> <td></td> <td></td> </tr> <tr> <td>1</td> <td>PCS</td> <td>HDMI 2.0 PCBA TX</td> <td></td> <td></td> </tr> <tr> <td>2</td> <td>PCS</td> <td>HDMI TYPE DF TO HDMI TYPE AM ADAPTOR</td> <td></td> <td></td> </tr> <tr> <td>L</td> <td>M</td> <td>(50/125um FIBER*(C-MID)*IC-7/0.08T*3C-19/0.08T*3C-41/0.08Tx1C+P+P PVC JACKET, COLOR: BLACK OD: 4.8±0.2mm</td> <td></td> <td></td> </tr> <tr> <td>2</td> <td>PCS</td> <td>HDMI 19PIN MALE CONNECTOR, METAL SHELL GOLD PLATED</td> <td></td> <td></td> </tr> <tr> <td>Q' TY</td> <td>UNIT</td> <td>DESCRIPTIONS</td> <td></td> <td></td> </tr> </tbody> </table>					ITEM	REV.	DESCRIPTION	DATE	APPROVED	10	G	SR, BLACK PVC 45P			2	SET	ADAPTOR METAL SHELL			1	PCS	METAL SHELL "DISPLAY" LOGO			1	PCS	METAL SHELL "SOURCE" LOGO			2	PCS	METAL SHELL "HDMI" LOGO			1	PCS	HDMI 2.0 PCBA RX			1	PCS	HDMI 2.0 PCBA TX			2	PCS	HDMI TYPE DF TO HDMI TYPE AM ADAPTOR			L	M	(50/125um FIBER*(C-MID)*IC-7/0.08T*3C-19/0.08T*3C-41/0.08Tx1C+P+P PVC JACKET, COLOR: BLACK OD: 4.8±0.2mm			2	PCS	HDMI 19PIN MALE CONNECTOR, METAL SHELL GOLD PLATED			Q' TY	UNIT	DESCRIPTIONS																																		
ITEM	REV.	DESCRIPTION	DATE	APPROVED																																																																																												
10	G	SR, BLACK PVC 45P																																																																																														
2	SET	ADAPTOR METAL SHELL																																																																																														
1	PCS	METAL SHELL "DISPLAY" LOGO																																																																																														
1	PCS	METAL SHELL "SOURCE" LOGO																																																																																														
2	PCS	METAL SHELL "HDMI" LOGO																																																																																														
1	PCS	HDMI 2.0 PCBA RX																																																																																														
1	PCS	HDMI 2.0 PCBA TX																																																																																														
2	PCS	HDMI TYPE DF TO HDMI TYPE AM ADAPTOR																																																																																														
L	M	(50/125um FIBER*(C-MID)*IC-7/0.08T*3C-19/0.08T*3C-41/0.08Tx1C+P+P PVC JACKET, COLOR: BLACK OD: 4.8±0.2mm																																																																																														
2	PCS	HDMI 19PIN MALE CONNECTOR, METAL SHELL GOLD PLATED																																																																																														
Q' TY	UNIT	DESCRIPTIONS																																																																																														
<table border="1" style="width: 100%; border-collapse: collapse;"> <thead> <tr> <th>MOULD</th> <th>DATE</th> <th>APPROVED</th> <th>DATE</th> </tr> </thead> <tbody> <tr> <td></td> <td></td> <td></td> <td>2019/07/03</td> </tr> </tbody> </table>					MOULD	DATE	APPROVED	DATE				2019/07/03																																																																																				
MOULD	DATE	APPROVED	DATE																																																																																													
			2019/07/03																																																																																													
<table border="1" style="width: 100%; border-collapse: collapse;"> <thead> <tr> <th colspan="2" style="text-align: center;">AOC HDMI Cable</th> <th>P/N</th> <th>REV</th> </tr> <tr> <th colspan="2" style="text-align: center;">CUSTOMER</th> <th>DWG</th> <th>1.0</th> </tr> <tr> <th colspan="2" style="text-align: center;">CUSTOMER P/N</th> <td colspan="2"></td> </tr> </thead> <tbody> <tr> <td colspan="2" style="text-align: center;">  </td> <td colspan="2"></td> </tr> <tr> <td colspan="4">TOLERANCES: .X:±0.25 .XY:±0.05</td> </tr> <tr> <td colspan="4">SCALE: 1/1 UNIT: mm</td> </tr> <tr> <td style="text-align: center;">DRAWN</td> <td style="text-align: center;">CHECKED</td> <td style="text-align: center;">APPROVED</td> <td style="text-align: center;">DATE</td> </tr> </tbody> </table>					AOC HDMI Cable		P/N	REV	CUSTOMER		DWG	1.0	CUSTOMER P/N								TOLERANCES: .X:±0.25 .XY:±0.05				SCALE: 1/1 UNIT: mm				DRAWN	CHECKED	APPROVED	DATE																																																																
AOC HDMI Cable		P/N	REV																																																																																													
CUSTOMER		DWG	1.0																																																																																													
CUSTOMER P/N																																																																																																
																																																																																																
TOLERANCES: .X:±0.25 .XY:±0.05																																																																																																
SCALE: 1/1 UNIT: mm																																																																																																
DRAWN	CHECKED	APPROVED	DATE																																																																																													