

## NE8FAV-SD-AE

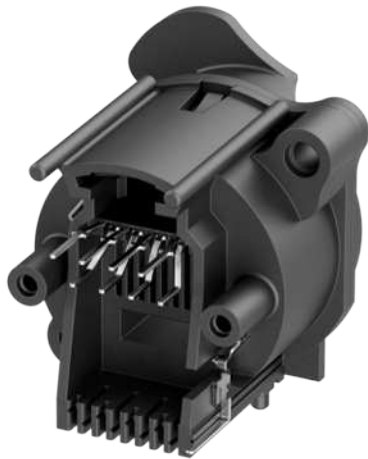
Vertical PCB mount RJ45 receptacle, A-Series cutout with latch lock, with 2 additional screw-domes for fixing the connector on the PCB (fixing screws included), max. panel thickness 3 mm.



The etherCON Series is a ruggedized and lockable RJ45 connector system, optimized for pro audio, video and lightning network applications. The chassis connectors are shaped to fit into standardized panels out of the entertainment industry.

The all plastic A-Series offers the most space saving and cost effective design.

Attention! Does not intermate with CAT6 cable connector NE8MC6-MO and NKE6S\* cables.



## Features & Benefits

- Accommodates rugged etherCON NE8MX\* or any standard RJ45 plug
- Most space saving and cost effective design
- SD-Version with screw domes to fix connector onto PCB securely
- Approved latch lock system
- CAT5e performance according to ISO/IEC 11801 and TIA/EIA 568-C.2
- Compound material of push tab improves ESD protection

## Technische Informationen

| Produkte               |              |
|------------------------|--------------|
| <b>Title</b>           | NE8FAV-SD-AE |
| <b>Type</b>            | Chassis      |
| <b>Connection Type</b> | etherCON     |
| <b>Gender</b>          | Female       |

| Elektrisch                       |                        |
|----------------------------------|------------------------|
| <b>Contact resistance</b>        | <50 mΩ                 |
| <b>Dielectric strength</b>       | 1 kVdc                 |
| <b>Frequency range</b>           | 1 – 100 MHz            |
| <b>Insulation resistance</b>     | > 0.5 GΩ               |
| <b>Rated current per contact</b> | 1.5 A                  |
| <b>Rated voltage</b>             | < 50 V                 |
| <b>Transmission performance</b>  | CAT5e                  |
| <b>Standard compliance</b>       | TIA/EIA 586B, IEC11801 |

| Mechanische Daten |                      |
|-------------------|----------------------|
| Insertion force   | ≤ 20 N               |
| Withdrawal force  | ≤ 20 N               |
| Lifetime          | > 1000 mating cycles |
| Panel thickness   | Max. 3 mm (0.12")    |
| Wiring            | Vertical PCB mount   |
| Locking device    | Rear mounting        |
| Chassis shape     | A                    |
| Mounting          | A-Screw              |

| Material        |                           |
|-----------------|---------------------------|
| Contact plating | 0.2 µm Au over Ni plating |
| Contacts        | Bronze (CuSn8)            |
| Locking element | HPPA                      |
| Shell           | PBTP 15 % GR              |

| Umwelt            |                           |
|-------------------|---------------------------|
| Flammability      | UL 94 V-0                 |
| Temperature range | -30 °C to +80 °C          |
| Solderability     | Complies with IEC 68-2-20 |