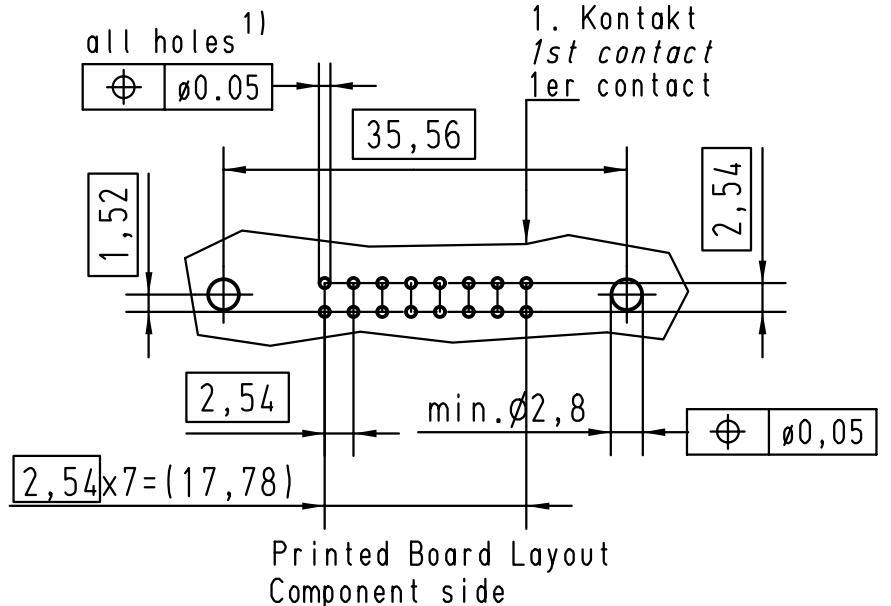
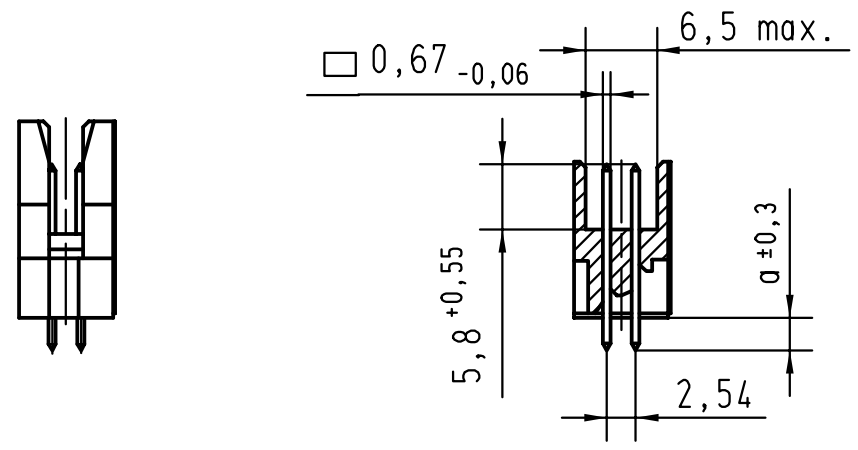
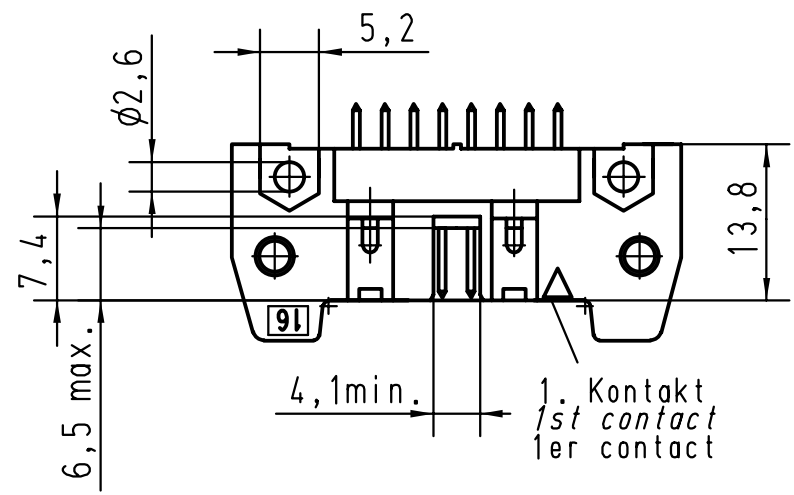
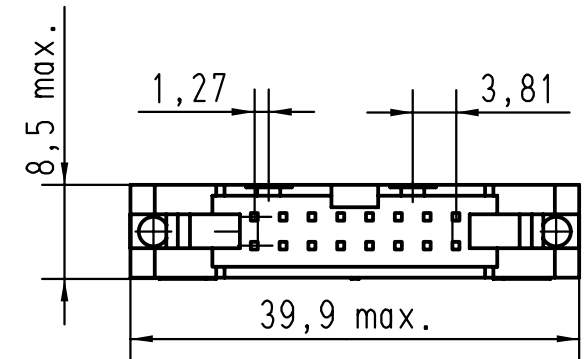
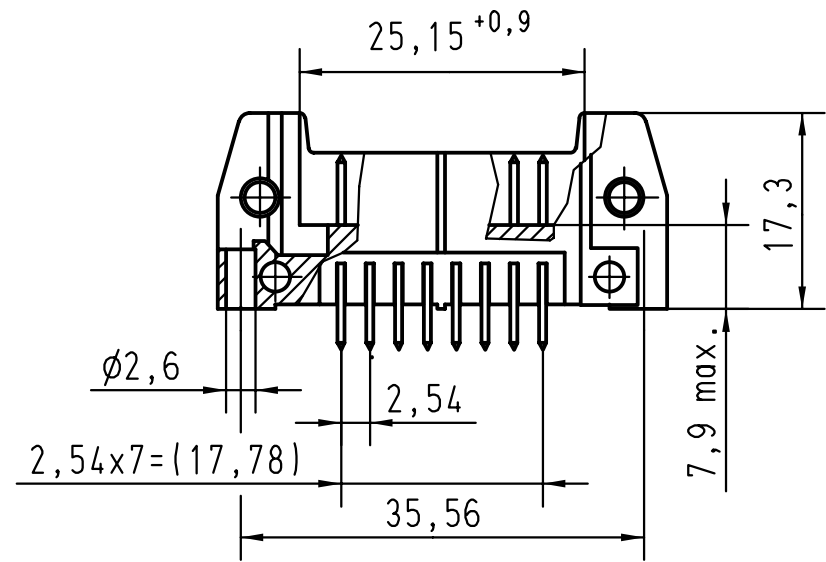


Alle Rechte vorbehalten/ All rights reserved



1) Einlötlötstifte passend für Lochungen  
 $\phi 1 \pm 0.1$  nach IEC 60326-3  
 Solder pins for PCB connections  
 $\phi 1 \pm 0.1$  as per IEC 60326-3  
 A souder pour des trous de  $\phi 1 \pm 0.1$   
 selon IEC 60326-3

			All Dimensions in mm Original Size DIN A 3			Techn. Character.			Nicht tolerierte Maße! Free size tolerances		
09185167922	3	4,5									SEK 18 Male Connector Standard 16 poles with straight solder pins without locking levers
09185166922	2	4,5								1,5:1	
09185167924	3	2,9									
09185166924	2	2,9									
Bestell-Nr. Part-No. Reference	Anforderungsstufe performance level Niveau de qualite	a				27931 15-JUNE-00 JB 26554 01-DEC-99 JB Mod. Dat. Name	HARTING EURL F-95972 Paris		TB 0918516x92x Sub.	Blatt/ page 1/2	