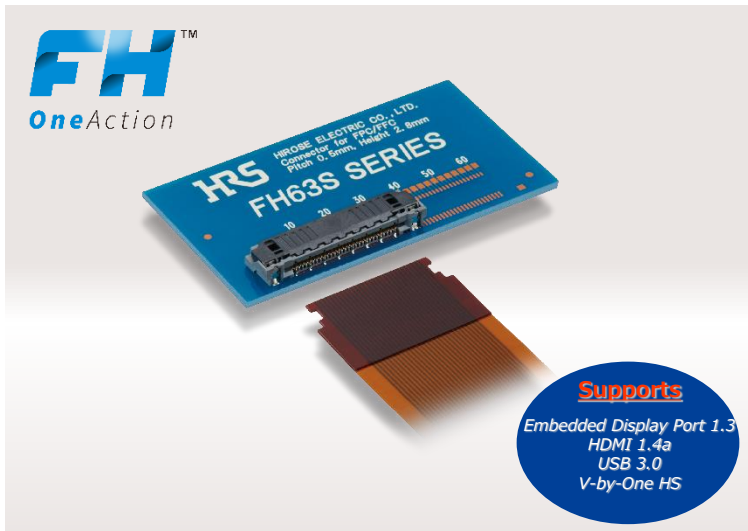


Nov. 1. 2020 Copyright 2020 HIROSE ELECTRIC CO., LTD. All Rights Reserved.



**FH** Flip-Lock Pioneer **H**irose

Features

- 1 One Action Lock improves workability and is ideal for robot assembly
- 2 Independent spring with two-point contact design for high contact reliability
  - Wiping effect reduces contact failure due to foreign matter
- 3 125°C heat resistance
  - Passed various strict tests for automotive
- 4 Easy FPC insertion and high retention force
- 5 Shielded FFC is available for EMI prevention



Robust



One Action



Automotive

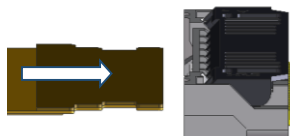
For Automotive Applications

Patented

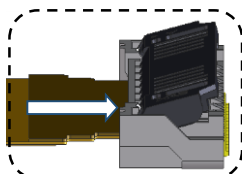
One Action Lock

◆FPC/FFC Insertion

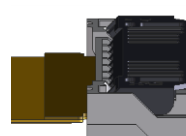
① Insert FPC



(Inserting)



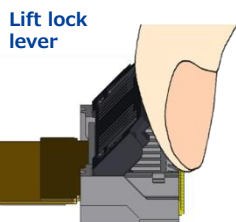
② Lock



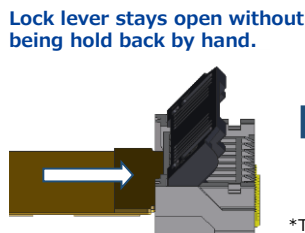
Click

◆FPC/FFC Removal

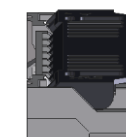
① Unlock



② Removal FPC



③ Close the lock lever\*



\*The lock lever close automatically when the FPC is removed, but this is not a defect of the product.

Specifications

Rated Current	0.5A
Rated Voltage	50V AC/DC
Withstanding Voltage	150V AC for 1 min.
Insulation Resistance	500MΩ or more (DC 100V)
Operating Temperature	-55 to +125°C
Mating Durability	10 times

- RoHS compliant, Halogen free\*

\*This product satisfies halogen free requirements defined as 900ppm maximum chlorine, 900ppm maximum bromine, and 1500ppm maximum total of chlorine and bromine.