

# MASTER Value LEDtube Universal T8

## MAS LEDtube VLE UN 1200mm UO 15.5W865 T8

The new Philips MASTER Value LEDtube Universal T8 brings ease and simplicity to your lighting project. That's because you do not need to match the driver technology anymore: a unique design enables the Philips MASTER Value LEDtube Universal T8 to directly fit in luminaires operating on either electromagnetic ballasts or HF electronic ballasts or mains power connection. It is so simple to operate and you no longer need to stock two types of tubes! Perfectly safe, reliable & easy to install Philips MASTER Value LEDtube Universal T8 is the ideal alternative to standard fluorescent tubes to maximize value over lifetime with high energy saving and lower maintenance costs.

### Product data

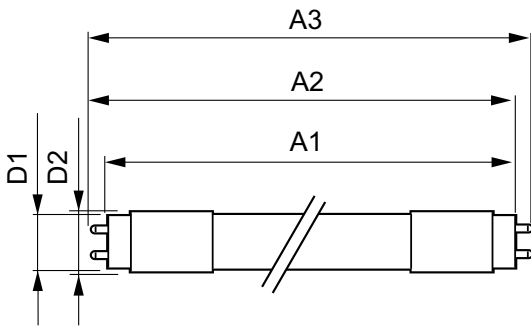
General Information		Color Consistency	
Cap-Base	G13 [Medium Bi-Pin Fluorescent]	Color rendering index (CRI)	80
CE mark	Yes	LLMF At End Of Nominal Lifetime (Nom)	70 %
EU RoHS compliant	Yes	<b>Operating and Electrical</b>	
Nominal lifetime	60,000 hour(s)	Line Frequency	50 to 60 Hz
Switching Cycle	50,000	Input Frequency	50 to 60 Hz
Lighting Technology	LED	Power Consumption	15.5 W
Flux measurement reference	Sphere	Lamp Current (Nom)	75 mA
<b>Light Technical</b>		Starting Time (Nom)	0.5 s
Color Code	865 [CCT of 6500K]	Warm-up time to 60% light	0.5 s
Beam Angle (Nom)	190 degree(s)	Power Factor (Fraction)	0.9
Luminous Flux	2,500 lumen	Voltage (Nom)	220-240 V
Color Designation	Cool Daylight	<b>Temperature</b>	
Correlated Color Temperature (Nom)	6500 K	Ambient temperature range	-20 °C to 45 °C
Luminous Efficacy (rated) (Nom)	161 lm/W		

# MASTER Value LEDtube Universal T8

T-Case Maximum (Nom)	55 °C
<b>Controls and Dimming</b>	
Dimmable	No
<b>Mechanical and Housing</b>	
Bulb Finish	Frosted
Bulb Material	Glass
Product Length	1,200 mm
Bulb Shape	Tube, double-ended
<b>Approval and Application</b>	
Energy Saving Product	Yes
Approval Marks	RoHS compliance TUV CE marking KEMA Keur certificate
Energy Consumption kWh/1000 h	16 kWh

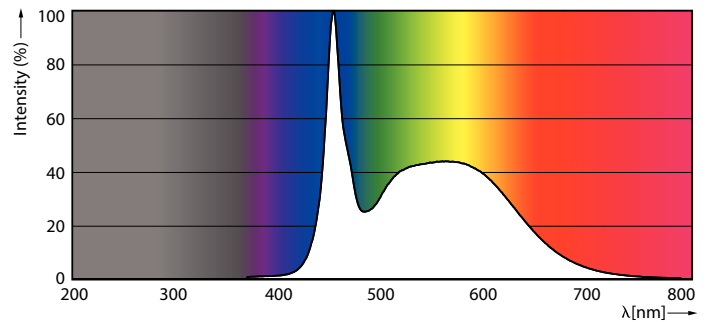
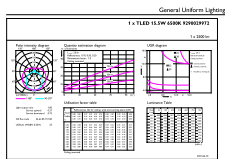
EPREL Registration Number	403,660
<b>Product Data</b>	
Full product code	871951431672000
Order product name	MAS LEDtube VLE UN 1200mm UO 15.5W865 T8
Order code	929002997202
Numerator - Quantity Per Pack	1
Numerator - Packs per outer box	10
Material number (12NC)	929002997202
Net weight	0.215 kg
Full product name	MAS LEDtube VLE UN 1200mm UO 15.5W865 T8
EAN/UPC - Case	8719514316737

## Dimensional drawing



Product	D1	D2	A1	A2	A3
MAS LEDtube VLE UN 1200mm UO 15.5W865 T8	26 mm	28 mm	1,199 mm	1,205 mm	1,213 mm

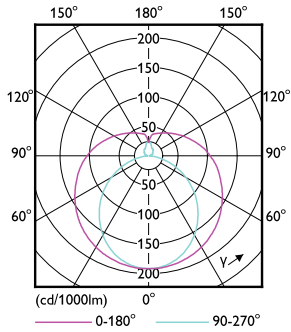
## Photometric data



Spectral Power Distribution Colour - MAS LEDtube VLE UN 1200mm UO 15.5W865 T8

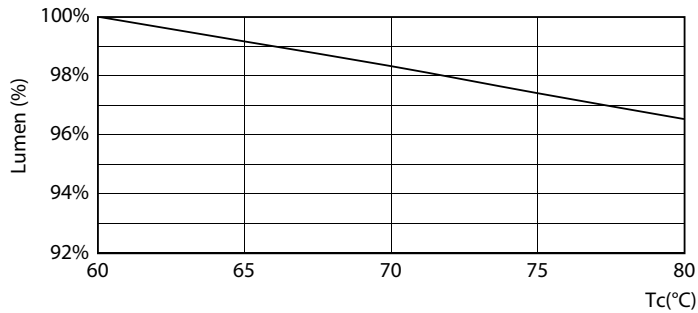
# MASTER Value LEDtube Universal T8

## Photometric data

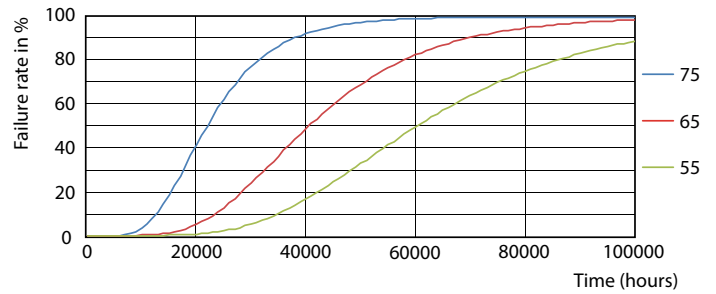


Light Distribution Diagram - MAS LEDtube VLE UN 1200mm UO 15.5W865 T8

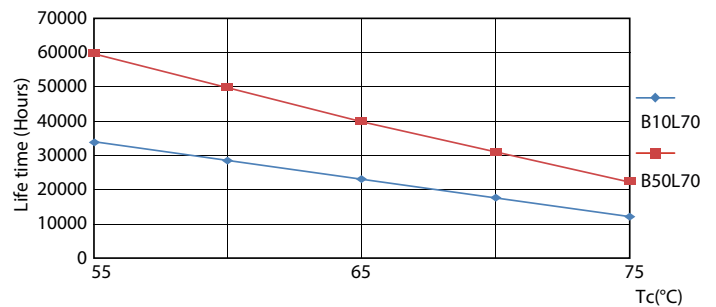
## Lifetime



Lumen Maintenance Diagram - MAS LEDtube VLE UN 1200mm UO 15.5W865 T8



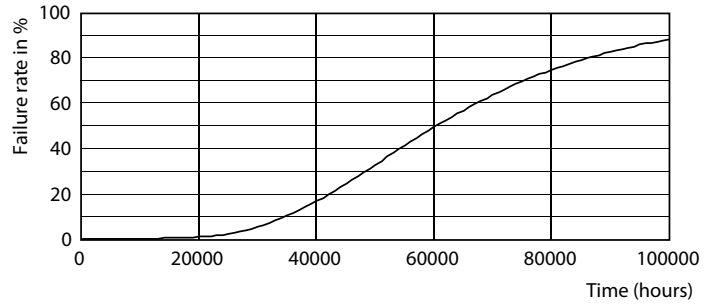
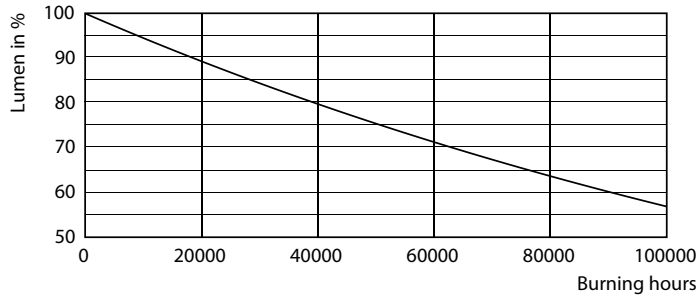
Life Expectancy Diagram - MAS LEDtube VLE UN 1200mm UO 15.5W865 T8



Life Expectancy Diagram - MAS LEDtube VLE UN 1200mm UO 15.5W865 T8

# MASTER Value LEDtube Universal T8

## Lifetime



Lumen Maintenance Diagram - MAS LEDtube VLE UN 1200mm UO 15.5W865 T8

Life Expectancy Diagram - MAS LEDtube VLE UN 1200mm UO 15.5W865 T8

