

# DMS Series



## Commercial Version MIL-C-5015 compatible



### SUMMARY

DMS series connectors are intermateable and intermoutable with MIL-C-5015 connectors. The DMS series offers:

- Hard dielectric interial (diallyl phthalate)
- Zinc plated die cast aluminum shells with olive drab chromate finish (no cadmium is used)
- A selection of over 73 insert arrangements spanning 12 shell sizes and 5 contact sizes
- Pre-tinned solder cup terminations
- A choice of class A (one-piece) and class B (two-piece) back-shell configuration

DMS series connector are designed for use in a wide range of general industrial applications.

### FEATURES

#### ● Improved Dielectric Withstanding Voltage (DWV):

An insulation barrier ridge between each contact position effectively increases the creepage distance across the surfaces of the insert, thun increasing DWV.

#### ● Stable Insert Dilectic Material:

Molded Diallyl Phthalate inserts maintain their dielectric, mechanical, and dimensional properties over a wide a range of temperature, humidity, and aging conditions.



# DMS Series



- **Wide Range Configurations:**

A choice of over 73 insert arrangements, plus a variety of shell styles and hardware, results in a range of configurations to meet most application needs.

- **Shells Keyed to Prevent Mis-Mating:**

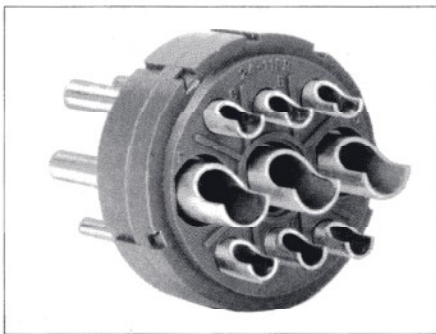
Receptacle key and plug keyway mate before contacts engage to ensure proper contact mating. Alternate rotated insert positions further ensure against erroneous mating of similar connectors.

- **Superior Strength of Coupling Ring:**

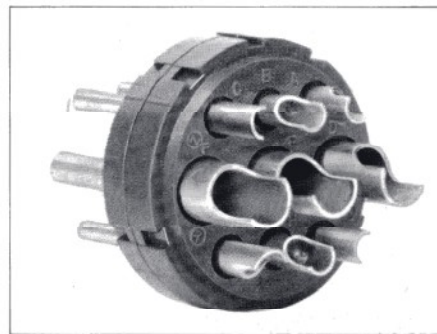
Coupling rings are machined from bar stock to provide superior coupling thread strength as compared to die cast products.

- **Quick and Easy Termination:**

Contacts are pre-loaded in the connector. Pre-Tinned solder cups are permanently oriented in one direction to simplify termination.



DDK



OTHER

## APPLICATIONS

The DMS series is designed and manufactured for reliable performance in a broad range of electric/electronic equipment applications. These include machine tools, communications, instrumentation and high current systems.

## MATERIAL / FINISH

|                |   |
|----------------|---|
| Contact        | .....Copper alloy/Silver or optional Gold plating             |
| Insulator      | .....Diallyl phthalate resin/Blue                             |
| Shell          | .....Aluminum alloy/Zinc plating, Olive drab chromate finish  |
| Coupling Ring  | .....Aluminum alloy/Zinc plating, Olive drab chromate finish  |
| Retaining Ring | .....Phosphor bronze/Zinc plating, Olive drab chromate finish |
| Cap            | .....Aluminum alloy/Zinc plating, Olive drab chromate finish  |
| Chain          | .....Stainless steel  |

# DMS Series



## Wire Size

| Contact Size | Wire Size  |
|--------------|------------|
| #16          | AWG#16—#22 |
| #12          | AWG#12—#14 |
| #8           | AWG#8—#10  |
| #4           | AWG#4—#6   |
| #0           | AWG#0—#2   |

## Service Rating

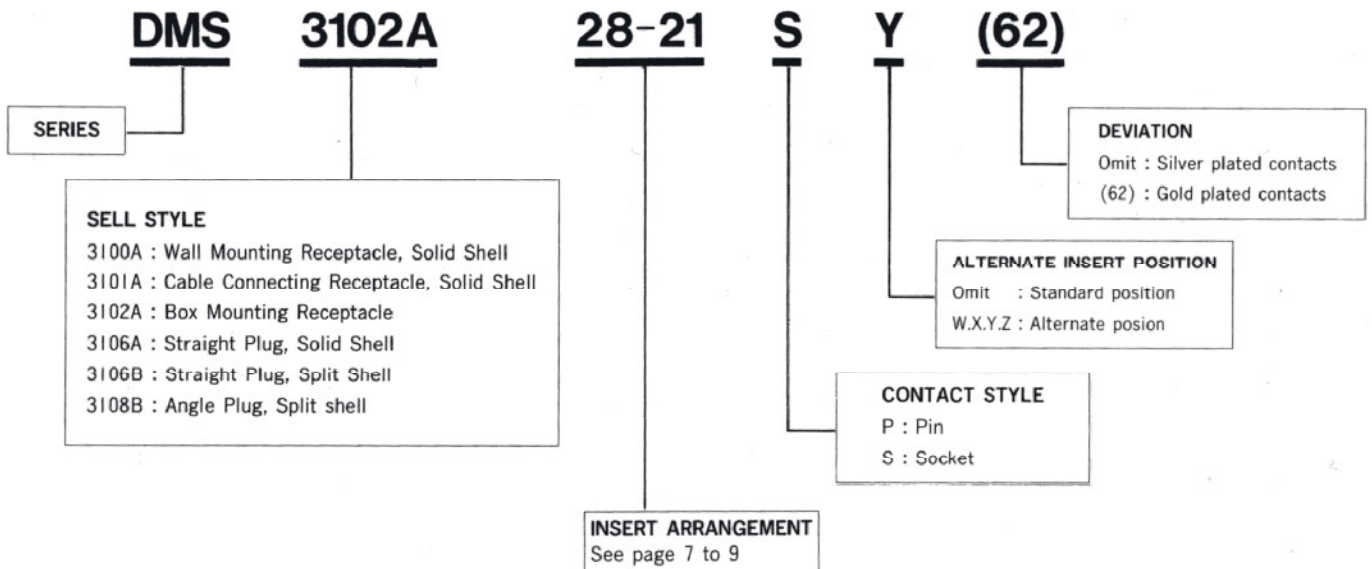
| Service Rating | Operating Voltage (V) |         |
|----------------|-----------------------|---------|
|                | DC                    | AC(rms) |
| INST           | 250                   | 200     |
| A              | 700                   | 500     |
| D              | 1250                  | 900     |
| E              | 1750                  | 1250    |
| B              | 2450                  | 1750    |
| C              | 4200                  | 3000    |

## Contact Current Rating

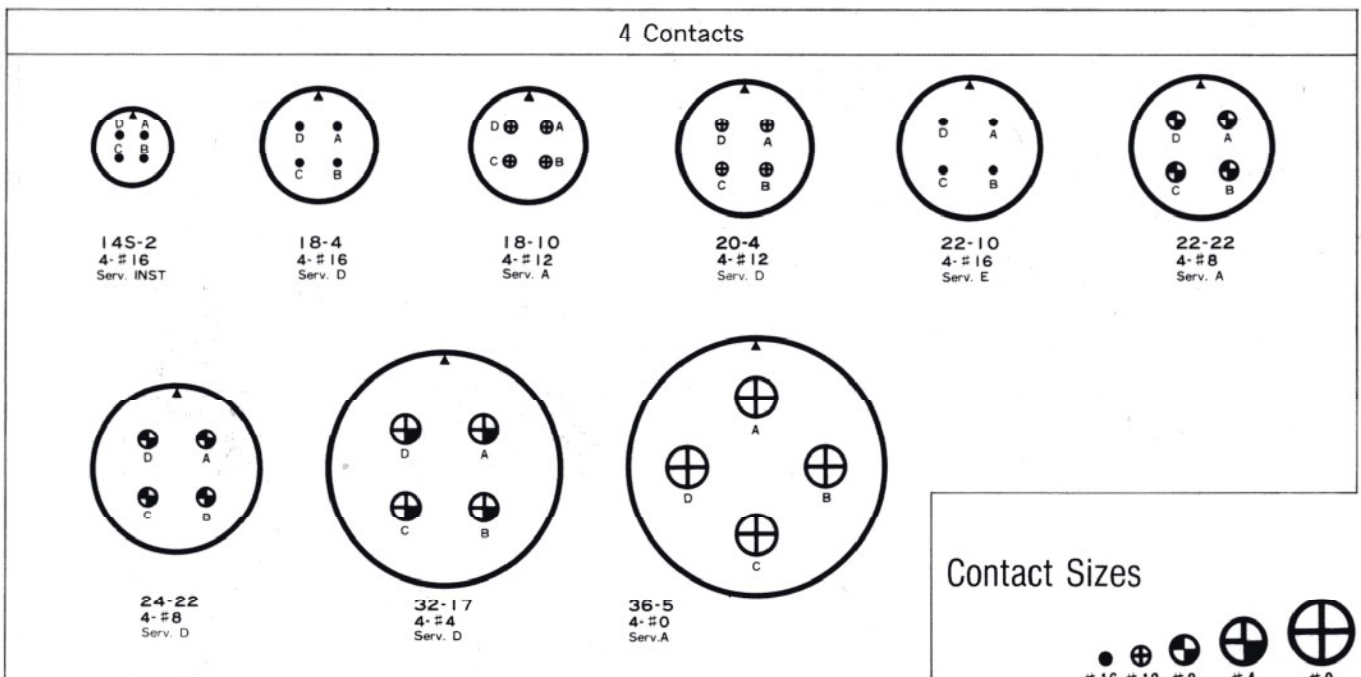
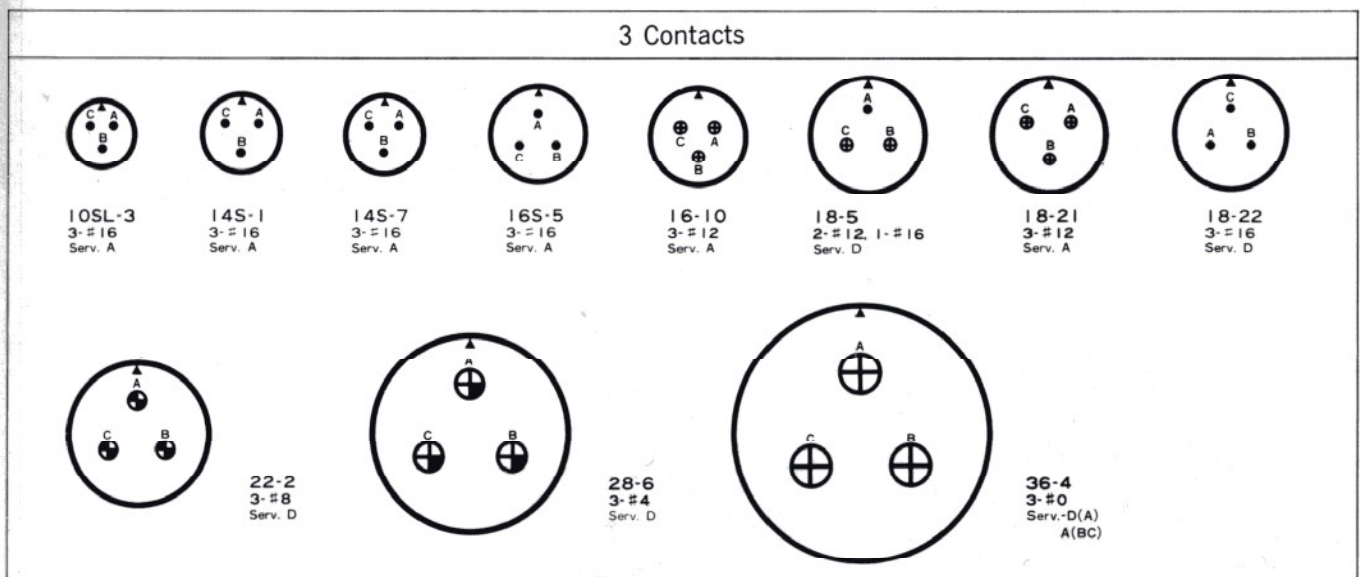
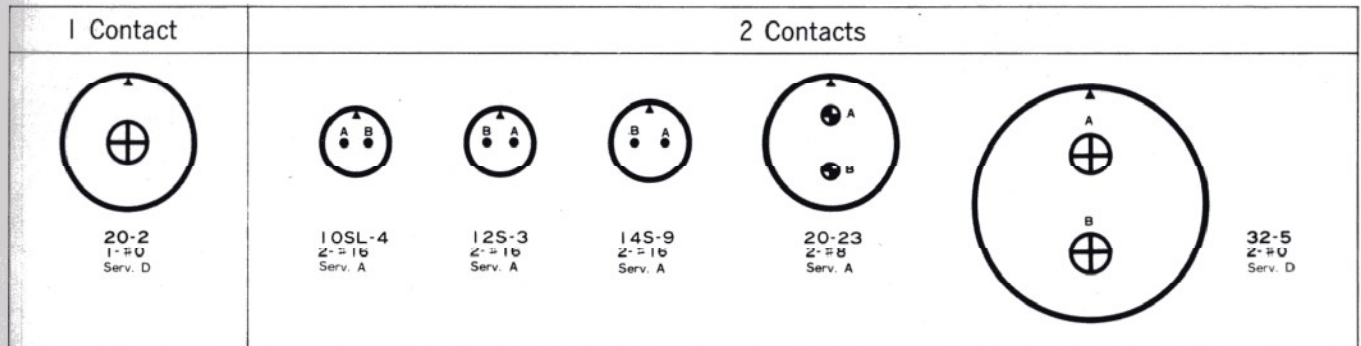
| Contact Size | Test Current (Amperes) |
|--------------|------------------------|
| #16          | 13                     |
| #12          | 23                     |
| #8           | 46                     |
| #4           | 80                     |
| #0           | 150                    |

Maximum total current connector is the same as the allowable current for wire bundles as specified in MIL-W-5088.

## Ordering Information



## Insert Arrangements (Front view of Pin Insert)



# DMS Series



| 5 Contacts                                |                                |                           |                           | 6 Contacts                      |                                |                                  |
|---|--------------------------------|---------------------------|---------------------------|---------------------------------|--------------------------------|----------------------------------|
|   |                                |                           |                           |                                 |                                |                                  |
| 14S-5<br>5-#16<br>Serv. INST              | 16S-8<br>5-#16<br>Serv. A      | 18-11<br>5-#12<br>Serv. A | 18-20<br>5-#16<br>Serv. A | 14S-6<br>6-#16<br>Serv. INST    | 18-12<br>6-#16<br>Serv. A      | 20-17<br>5-#12, 1-#16<br>Serv. A |
|   |                                |                           |                           |                                 |                                |                                  |
| 32-1<br>2-#0, 3-#12<br>定格-E (A)<br>D(その他) | 32-2<br>3-#4, 2-#16<br>Serv. E |                           |                           | 20-22<br>3-#8, 3-#16<br>Serv. A | 36-3<br>3-#0, 3-#12<br>Serv. D |                                  |

| 7 Contacts                |                           |   | 8 Contacts                                |                                  | 9 Contacts |  |
|---------------------------|---------------------------|---|---|----------------------------------|------------|--|
|                           |                           |   |   |                                  |            |  |
| 16S-1<br>7-#16<br>Serv. A | 20-15<br>7-#12<br>Serv. A | 22-28<br>7-#12<br>Serv. A                             | 18-8<br>1-#12, 7-#16<br>Serv. A           | 20-16<br>2-#12, 7-#16<br>Serv. A |            |  |
|                           |                           |   |   |                                  |            |  |
| 24-2<br>7-#12<br>Serv. D  | 24-10<br>7-#8<br>Serv. A  | 28-10<br>2-#4, 2-#0, 3-#12<br>Serv. D(G)<br>A(Others) | 20-7<br>8-#16<br>Serv. D(ABHG)<br>A(CDEF) | 20-18<br>3-#12, 6-#16<br>Serv. A |            |  |
|                           |                           |   |   |                                  |            |  |
|                           |                           |   | 22-23<br>8-#12<br>Serv. D(H)<br>A(Others) | 24-11<br>3-#8, 6-#12<br>Serv. A  |            |  |

| 10 Contacts                                     |                                  | 11 Contacts                | 14 Contacts                |                                   |  |
|---|----------------------------------|----------------------------|----------------------------|-----------------------------------|--|
|   |                                  |                            |                            |                                   |  |
| 18-1<br>10-#16<br>Serv. A(BCFG)<br>INST(Others) | 24-20<br>2-#12, 9-#16<br>Serv. D | 20-27<br>14-#16<br>Serv. A | 22-19<br>14-#16<br>Serv. A | 28-20<br>10-#12, 4-#16<br>Serv. A |  |
|   |                                  |                            |                            |                                   |  |
| 18-19<br>10-#16<br>Serv. A                      |                                  |                            |                            | 32-9<br>2-#4, 12-#16<br>定格-D      |  |



# DMS Series



| 16 Contacts                         | 17 Contacts                               | 19 Contacts                         | 20 Contacts                         |
|-------------------------------------|---|-------------------------------------|-------------------------------------|
| <p>24-5<br/>16-#16<br/>Serv. A</p>  | <p>24-7<br/>2-#12, 14-#16<br/>Serv. A</p> | <p>20-29<br/>17-#16<br/>Serv. A</p> | <p>22-14<br/>19-#16<br/>Serv. A</p> |
| <p>28-16<br/>20-#16<br/>Serv. A</p> |   |                                     |                                     |

| 22 Contacts                                | 24 Contacts                         | 26 Contacts                         | 30 Contacts                               |
|--|-------------------------------------|-------------------------------------|---|
| <p>28-11<br/>4-#12, 10-#16<br/>Serv. A</p> | <p>24-28<br/>24-#16<br/>Serv. A</p> | <p>28-12<br/>20-#16<br/>Serv. A</p> | <p>32-8<br/>0-#12, 24-#16<br/>Serv. A</p> |

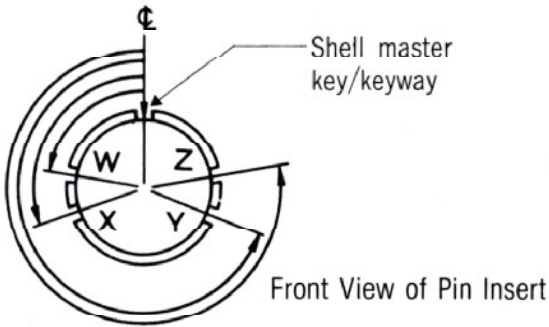
| 31 Contacts   | 35 Contacts                         | 37 Contacts   |
|---|-------------------------------------|---|
| <p>36-9<br/>1-#4, 2-#8<br/>14-#12, 14-#16<br/>Serv. A</p> | <p>28-15<br/>35-#16<br/>Serv. A</p> | <p>32-7<br/>7-#12, 28-#16<br/>Serv. INST(A Bhj)<br/>A(others)</p> |
|   |                                     | <p>28-21<br/>37-#12<br/>Serv. A</p>                               |

| 48 Contacts                         | 52 Contacts                          | 54 Contacts                          | 73 Contacts                         |
|-------------------------------------|--------------------------------------|--------------------------------------|-------------------------------------|
| <p>36-10<br/>48-#16<br/>Serv. A</p> | <p>32-414<br/>52-#16<br/>Serv. A</p> | <p>32A-10<br/>54-#16<br/>Serv. A</p> | <p>36-73<br/>73-#16<br/>Serv. A</p> |

Contact Sizes



## Alternate Insert Positions



| No. of. Contacts | Insert No. | W   | X    | Y    | Z    |
|------------------|------------|-----|------|------|------|
| 1                | 20-2       | -   | -    | -    | -    |
| 2                | 10SL-4     | -   | -    | -    | -    |
|                  | 12S-3      | 70° | 145° | 215° | 290° |
|                  | 14S-9      | 70  | 145  | 215  | 290  |
|                  | 20-23      | 35  | 110  | 250  | 325  |
|                  | 32-5       | 35  | 110  | 250  | 325  |
| 3                | 10SL-3     | -   | -    | -    | -    |
|                  | 14S-1      | -   | -    | -    | -    |
|                  | 14S-7      | 90  | 180  | 270  | -    |
|                  | 16S-5      | 70  | 145  | 215  | 290  |
|                  | 16-10      | 90  | 180  | 270  | -    |
|                  | 18-5       | 80  | 110  | 250  | 280  |
|                  | 18-21      | -   | -    | -    | -    |
|                  | 18-22      | 70  | 145  | 215  | 290  |
|                  | 22-2       | 70  | 145  | 215  | 290  |
|                  | 28-6       | 70  | 145  | 215  | 290  |
|                  | 36-4       | 70  | 145  | 215  | 290  |
| 4                | 14S-2      | -   | 120  | 240  | -    |
|                  | 18-4       | 35  | 110  | 250  | 325  |
|                  | 18-10      | -   | 120  | 240  | -    |
|                  | 20-4       | 45  | 110  | 250  | -    |
|                  | 22-10      | 35  | 110  | 250  | 325  |
|                  | 22-22      | -   | 110  | 250  | -    |
|                  | 24-22      | 45  | 110  | 250  | -    |
|                  | 32-17      | 45  | 110  | 250  | -    |
|                  | 36-5       | -   | 120  | 240  | -    |
| 5                | 14S-5      | -   | 110  | -    | -    |
|                  | 16S-8      | -   | 170  | 265  | -    |
|                  | 18-11      | -   | 170  | 265  | -    |
|                  | 18-20      | 90  | 180  | 270  | -    |
|                  | 32-1       | 80  | 110  | 250  | 280  |
|                  | 32-2       | 70  | 145  | 215  | 290  |
| 6                | 14S-6      | -   | -    | -    | -    |
|                  | 18-12      | 80  | -    | -    | 280  |
|                  | 20-17      | 90  | 180  | 270  | -    |
|                  | 20-22      | 80  | 110  | 250  | 280  |
|                  | 36-3       | 70  | 145  | 215  | 290  |

| No. of. Contacts | Insert No. | W  | X   | Y   | Z   |
|------------------|------------|----|-----|-----|-----|
| 7                | 16S-1      | 80 | -   | -   | 280 |
|                  | 20-15      | 80 | -   | -   | 280 |
|                  | 22-28      | 80 | -   | -   | 280 |
|                  | 24-2       | 80 | -   | -   | 280 |
|                  | 24-10      | 80 | -   | -   | 280 |
|                  | 28-10      | 80 | 110 | 250 | 280 |
| 8                | 18-8       | 70 | -   | -   | 290 |
|                  | 20-7       | 80 | 110 | 250 | 280 |
|                  | 22-23      | 35 | -   | 250 | -   |
| 9                | 20-16      | 80 | 110 | 250 | 280 |
|                  | 20-18      | 35 | 110 | 250 | 325 |
|                  | 24-11      | 35 | 110 | 250 | 325 |
| 10               | 18-1       | 70 | 145 | 215 | 290 |
|                  | 18-19      | -  | 120 | 240 | -   |
| 11               | 24-20      | 80 | 110 | 250 | 280 |
| 14               | 20-27      | 35 | 110 | 250 | 325 |
|                  | 22-19      | 80 | 110 | 250 | 280 |
|                  | 28-20      | 80 | 110 | 250 | 280 |
| 16               | 32-9       | 80 | 110 | 250 | 280 |
|                  | 24-5       | 80 | 110 | 250 | 280 |
| 17               | 24-7       | 80 | 110 | 250 | 280 |
| 19               | 20-29      | 80 | -   | -   | 280 |
| 20               | 22-14      | 80 | 110 | 250 | 280 |
| 22               | 28-16      | 80 | 110 | 250 | 280 |
| 24               | 28-11      | 80 | 110 | 250 | 280 |
| 26               | 24-28      | 80 | 110 | 250 | 280 |
| 30               | 28-12      | 90 | 180 | 270 | -   |
| 31               | 32-8       | 80 | 125 | 235 | 280 |
| 35               | 36-9       | 80 | 125 | 235 | 280 |
|                  | 28-15      | 80 | 110 | 250 | 280 |
| 37               | 32-7       | 80 | 125 | 235 | 280 |
| 48               | 28-21      | 80 | 110 | 250 | 280 |
| 52               | 36-10      | 80 | 125 | 235 | 280 |
| 54               | 32-414     | 80 | 110 | 250 | 280 |
| 73               | 32A-10     | -  | -   | -   | -   |
|                  | 36-73      | 80 | 110 | 250 | 280 |

# DMS Series



## Insert Specifications

| Insert Number | No. of Contacts | Service Rating | Contact Size |    |    |     |     |
|---------------|-----------------|----------------|--------------|----|----|-----|-----|
|               |                 |                | #0           | #4 | #8 | #12 | #16 |
| 10SL-3        | 3               | A              |              |    |    |     | 3   |
| 10SL-4        | 2               | A              |              |    |    |     | 2   |
| 12S-3         | 2               | A              |              |    |    |     | 2   |
| 14S-1         | 3               | A              |              |    |    |     | 3   |
| 14S-2         | 4               | INST           |              |    |    |     | 4   |
| 14S-5         | 5               | INST           |              |    |    |     | 5   |
| 14S-6         | 6               | INST           |              |    |    |     | 6   |
| 14S-7         | 3               | A              |              |    |    |     | 3   |
| 14S-9         | 2               | A              |              |    |    |     | 2   |
| 16S-1         | 7               | A              |              |    |    |     | 7   |
| 16S-5         | 3               | A              |              |    |    |     | 3   |
| 16S-8         | 5               | A              |              |    |    |     | 5   |
| 16-10         | 3               | A              |              |    |    | 3   |     |
| 18-1          | 10              | A              |              |    |    |     | 4   |
|               |                 | INST           |              |    |    |     | 6   |
| 18-4          | 4               | D              |              |    |    |     | 4   |
| 18-5          | 3               | D              |              |    |    | 2   | 1   |
| 18-8          | 8               | A              |              |    |    | 1   | 7   |
| 18-10         | 4               | A              |              |    |    | 4   |     |
| 18-11         | 5               | A              |              |    |    | 5   |     |
| 18-12         | 6               | A              |              |    |    |     | 6   |
| 18-19         | 10              | A              |              |    |    |     | 10  |
| 18-20         | 5               | A              |              |    |    |     | 5   |
| 18-21         | 3               | A              |              |    |    | 3   |     |
| 18-22         | 3               | D              |              |    |    |     | 3   |
| 20-2          | 1               | D              | 1            |    |    |     |     |
| 20-4          | 4               | D              |              |    |    | 4   |     |
| 20-7          | 8               | D              |              |    |    |     | 4   |
|               |                 | A              |              |    |    |     | 4   |
| 20-15         | 7               | A              |              |    |    | 7   |     |
| 20-16         | 9               | A              |              |    |    | 2   | 7   |
| 20-17         | 6               | A              |              |    |    | 5   | 1   |
| 20-18         | 9               | A              |              |    |    | 3   | 6   |
| 20-22         | 6               | A              |              |    |    | 3   | 3   |
| 20-23         | 2               | A              |              |    |    | 2   |     |
| 20-27         | 14              | A              |              |    |    |     | 14  |
| 20-29         | 17              | A              |              |    |    |     | 17  |
| 22-2          | 3               | D              |              |    |    | 3   |     |
| 22-10         | 4               | F              |              |    |    |     | 4   |
| 22-14         | 19              | A              |              |    |    |     | 19  |

| Insert Number | No. of Contacts | Service Rating | Contact Size |    |    |     |     |    |
|---------------|-----------------|----------------|--------------|----|----|-----|-----|----|
|               |                 |                | #0           | #4 | #8 | #12 | #16 |    |
| 22-19         | 14              | A              |              |    |    |     | 14  |    |
| 22-22         | 4               | A              |              |    |    | 4   |     |    |
| 22-23         | 8               | D              |              |    |    |     | 1   |    |
|               |                 | A              |              |    |    | 7   |     |    |
| 22-28         | 7               | A              |              |    |    | 7   |     |    |
| 24-2          | 7               | D              |              |    |    | 7   |     |    |
| 24-5          | 16              | A              |              |    |    |     | 16  |    |
| 24-7          | 16              | A              |              |    |    | 2   | 14  |    |
| 24-10         | 7               | A              |              |    |    | 7   |     |    |
| 24-11         | 9               | A              |              |    |    | 3   | 6   |    |
| 24-20         | 11              | D              |              |    |    | 2   | 9   |    |
| 24-22         | 4               | D              |              |    |    | 4   |     |    |
| 24-28         | 24              | INST           |              |    |    |     | 24  |    |
| 28-6          | 3               | D              |              |    | 3  |     |     |    |
| 28-10         | 7               | D              |              |    |    |     | 1   |    |
|               |                 | A              |              |    | 2  | 2   | 2   |    |
| 28-11         | 22              | A              |              |    |    | 4   | 18  |    |
| 28-12         | 26              | A              |              |    |    |     | 26  |    |
| 28-15         | 35              | A              |              |    |    |     | 35  |    |
| 28-16         | 20              | A              |              |    |    |     | 20  |    |
| 28-20         | 14              | A              |              |    |    | 10  | 4   |    |
| 28-21         | 37              | A              |              |    |    |     | 37  |    |
| 32-1          | 5               | E              |              |    |    |     | 1   |    |
|               |                 | D              | 2            |    |    | 2   |     |    |
| 32-2          | 5               | E              |              |    | 3  |     | 2   |    |
| 32-5          | 2               | D              | 2            |    |    |     |     |    |
| 32-7          | 35              | A              |              |    |    | 7   | 24  |    |
|               |                 | INST           |              |    |    |     | 4   |    |
| 32-8          | 30              | A              |              |    |    | 6   | 24  |    |
| 32-9          | 14              | D              |              |    | 2  |     | 12  |    |
| 32A-10        | 54              | A              |              |    |    |     | 54  |    |
| 32-17         | 4               | D              |              |    | 4  |     |     |    |
| 32-414        | 52              | A              |              |    |    |     | 52  |    |
| 36-3          | 6               | D              | 3            |    |    | 3   |     |    |
| 36-4          | 3               | D              | 1            |    |    |     |     |    |
|               |                 | A              | 2            |    |    |     |     |    |
| 36-5          | 4               | A              | 4            |    |    |     |     |    |
| 36-9          | 31              | A              |              |    | 1  | 2   | 14  | 14 |
| 36-10         | 48              | A              |              |    |    |     |     | 48 |
| 36-73         | 73              | A              |              |    |    |     |     | 73 |

Note: Insert number 10SL-3 and 10SL-4 are available the following part numbers only:  
 DMS3102A10SL-3P, DMS3102A10SL-4P  
 DMS3106A10SL-3S, DMS3106A10SL-4S

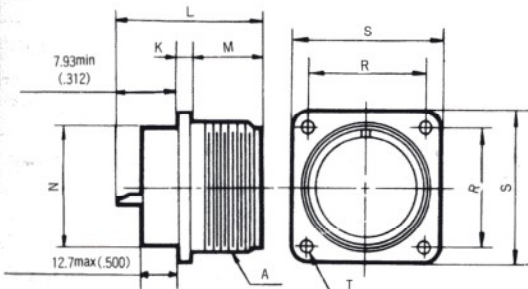


# DMS Series



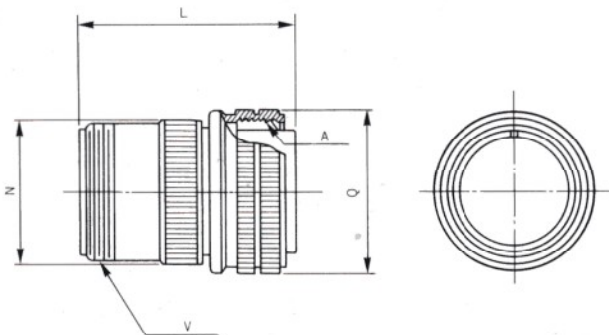
## DMS3102A (Box Mounting Receptacle)

Unit : mm (inch)



| Shell Size | Coupling Threads A | K             | L                | M               | N               | R                | S               | T              |
|------------|--------------------|---------------|------------------|-----------------|-----------------|------------------|-----------------|----------------|
| 10SL       | 5/8-24UNEF         | 2.1<br>(.083) | 30.25<br>(1.191) | 14.28<br>(.562) | 15.9<br>(.626)  | 18.26<br>(.719)  | 25.4<br>(1.000) | 3.05<br>(.120) |
| 12S        | 3/4-20UNEF         | 2.1<br>(.083) | 30.25<br>(1.191) | 14.28<br>(.562) | 17.5<br>(.689)  | 20.62<br>(.812)  | 27.8<br>(1.094) | 3.05<br>(.120) |
| 14S        | 7/8-20UNEF         | 2.1<br>(.083) | 30.25<br>(1.191) | 14.28<br>(.562) | 19.1<br>(.752)  | 23.01<br>(.906)  | 30.2<br>(1.189) | 3.05<br>(.120) |
| 16S        | 1-20UNEF           | 2.1<br>(.083) | 30.25<br>(1.191) | 14.28<br>(.562) | 22.2<br>(.872)  | 24.61<br>(.969)  | 32.5<br>(1.280) | 3.05<br>(.120) |
| 16         | 1-20UNEF           | 3.2<br>(.126) | 44.45<br>(1.750) | 19.05<br>(.750) | 22.4<br>(.874)  | 24.61<br>(.969)  | 32.5<br>(1.280) | 3.05<br>(.120) |
| 18         | 1 1/8-18UNEF       | 3.2<br>(.126) | 49.22<br>(1.938) | 19.05<br>(.750) | 25.4<br>(1.000) | 26.97<br>(1.062) | 34.9<br>(1.374) | 3.05<br>(.120) |
| 20         | 1 1/4-18UNEF       | 3.2<br>(.126) | 49.22<br>(1.938) | 19.05<br>(.750) | 28.6<br>(1.126) | 29.36<br>(1.156) | 38.1<br>(1.500) | 3.05<br>(.120) |
| 22         | 1 3/8-18UNEF       | 3.2<br>(.126) | 49.22<br>(1.938) | 19.05<br>(.750) | 31.8<br>(1.252) | 31.75<br>(1.250) | 41.3<br>(1.626) | 3.05<br>(.120) |
| 24         | 1 1/2-18UNEF       | 3.2<br>(.126) | 49.22<br>(1.938) | 20.63<br>(.812) | 34.9<br>(1.374) | 34.92<br>(1.375) | 44.4<br>(1.748) | 3.74<br>(.147) |
| 28         | 1 3/4-18UNS        | 3.2<br>(.126) | 49.22<br>(1.938) | 20.63<br>(.812) | 41.3<br>(1.626) | 39.67<br>(1.562) | 50.8<br>(2.000) | 3.74<br>(.147) |
| 32         | 2-18UNS            | 3.7<br>(.146) | 49.22<br>(1.938) | 22.23<br>(.875) | 48.4<br>(1.906) | 44.45<br>(1.750) | 57.2<br>(2.252) | 4.4<br>(.173)  |
| 36         | 2 1/4-16UN         | 3.7<br>(.146) | 49.22<br>(1.938) | 22.23<br>(.875) | 54.0<br>(2.126) | 49.23<br>(1.938) | 63.5<br>(2.500) | 4.4<br>(.173)  |

## DMS3106A (Straight Plug, Solid Shell)



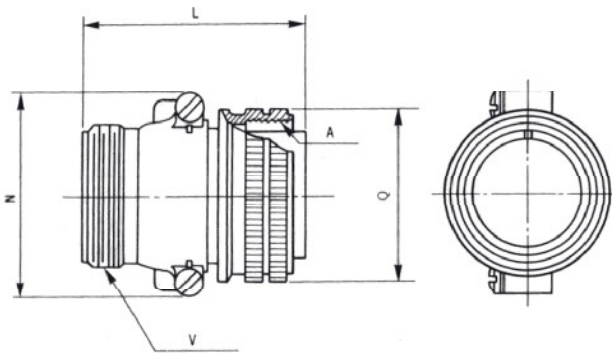
| Shell Size | Coupling Threads A | L               | Q                | N                | Rear Threads V |
|------------|--------------------|-----------------|------------------|------------------|----------------|
| 10SL       | 5/8-24UNEF         | 34.9<br>(1.374) | 22.22<br>(.875)  | 19.12<br>(.753)  | 5/8-24UNEF     |
| 12S        | 3/4-20UNEF         | 36.5<br>(1.437) | 25.4<br>(1.000)  | 19.89<br>(.783)  | 3/4-24UNEF     |
| 14S        | 7/8-20UNEF         | 36.5<br>(1.437) | 28.57<br>(1.125) | 22.29<br>(.878)  | 3/4-20UNEF     |
| 16S        | 1-20UNEF           | 36.9<br>(1.453) | 31.75<br>(1.250) | 25.45<br>(1.002) | 7/8-20UNEF     |
| 16         | 1-20UNEF           | 48.0<br>(1.890) | 31.75<br>(1.250) | 25.45<br>(1.002) | 7/8-20UNEF     |
| 18         | 1 1/8-18UNEF       | 50.8<br>(2.000) | 34.13<br>(1.344) | 28.64<br>(1.128) | 1-20UNEF       |
| 20         | 1 1/4-18UNEF       | 54.0<br>(2.126) | 37.28<br>(1.468) | 31.81<br>(1.252) | 1 3/16-18UNEF  |
| 22         | 1 3/8-18UNEF       | 54.0<br>(2.126) | 40.48<br>(1.594) | 34.99<br>(1.378) | 1 3/16-18UNEF  |
| 24         | 1 1/2-18UNEF       | 57.2<br>(2.252) | 43.63<br>(1.718) | 38.15<br>(1.502) | 1 7/16-18UNEF  |
| 28         | 1 3/4-18UNS        | 57.2<br>(2.252) | 50.0<br>(1.969)  | 44.51<br>(1.752) | 1 7/16-18UNEF  |
| 32         | 2-18UNS            | 60.3<br>(2.374) | 56.33<br>(2.218) | 51.24<br>(2.017) | 1 3/4-18UNS    |
| 36         | 2 1/4-16UN         | 60.3<br>(2.374) | 62.68<br>(2.468) | 57.21<br>(2.252) | 2-18UNS        |

# DMS Series



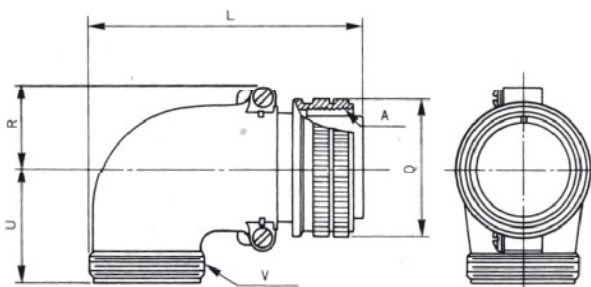
## DMS3106B (Straight Plug, Split Shell)

Unit : mm (inch)



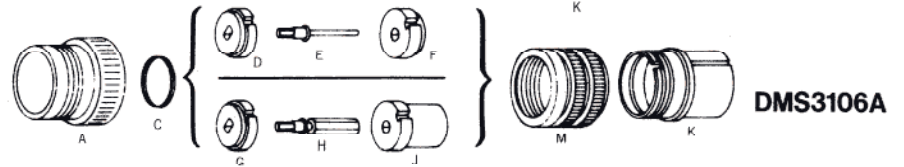
| Shell Size | Coupling Threads A | L                | Q                | N                | Rear Threads V |
|------------|--------------------|------------------|------------------|------------------|----------------|
| 12S        | 3/4-20UNEF         | 42.88<br>(1.688) | 25.4<br>(1.000)  | 26.97<br>(1.062) | 5/8-24UNEF     |
| 14S        | 7/8-20UNEF         | 42.88<br>(1.688) | 28.57<br>(1.125) | 30.0<br>(1.181)  | 3/4-20UNEF     |
| 16S        | 1-20UNEF           | 42.88<br>(1.688) | 31.75<br>(1.250) | 32.0<br>(1.260)  | 7/8-20UNEF     |
| 16         | 1-20UNEF           | 52.37<br>(2.062) | 31.75<br>(1.250) | 32.0<br>(1.260)  | 7/8-20UNEF     |
| 18         | 1 1/8-18UNEF       | 52.37<br>(2.062) | 34.13<br>(1.344) | 41.68<br>(1.641) | 1-20UNEF       |
| 20         | 1 1/4-18UNEF       | 55.57<br>(2.188) | 37.28<br>(1.468) | 46.02<br>(1.812) | 1 3/16-18UNEF  |
| 22         | 1 3/8-18UNEF       | 55.57<br>(2.188) | 40.48<br>(1.594) | 49.22<br>(1.938) | 1 3/16-18UNEF  |
| 24         | 1 1/2-18UNEF       | 58.72<br>(2.312) | 43.63<br>(1.718) | 52.37<br>(2.062) | 1 7/16-18-UNEF |
| 28         | 1 3/4-18UNS        | 58.72<br>(2.312) | 50.0<br>(1.969)  | 58.72<br>(2.312) | 1 7/16-18UNEF  |
| 32         | 2-18UNS            | 61.92<br>(2.438) | 56.33<br>(2.218) | 65.88<br>(2.594) | 1 3/4-18UNS    |
| 36         | 2 1/4-16UN         | 61.92<br>(2.438) | 62.68<br>(2.468) | 72.23<br>(2.844) | 2-18UNS        |

## DMS3108B (Angle Plug, Split Shell)

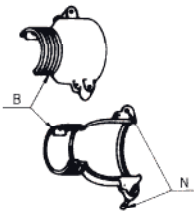


| Shell Size | Coupling Threads A | L                | Q                | R               | U               | Rear Threads V |
|------------|--------------------|------------------|------------------|-----------------|-----------------|----------------|
| 12S        | 3/4-20UNEF         | 50.8<br>(2.000)  | 25.4<br>(1.000)  | 10.5<br>(.413)  | 25.4<br>(1.000) | 5/8-24UNEF     |
| 14S        | 7/8-20UNEF         | 53.97<br>(2.125) | 28.57<br>(1.125) | 14.9<br>(.587)  | 27.0<br>(1.063) | 3/4-20UNEF     |
| 16S        | 1-20UNEF           | 60.32<br>(2.375) | 31.75<br>(1.250) | 18.5<br>(.728)  | 28.6<br>(1.126) | 7/8-20UNEF     |
| 16         | 1-20UNEF           | 65.07<br>(2.562) | 31.75<br>(1.250) | 18.5<br>(.728)  | 28.6<br>(1.126) | 7/8-20UNEF     |
| 18         | 1 1/8-18UNEF       | 68.27<br>(2.688) | 34.13<br>(1.344) | 20.5<br>(.807)  | 30.2<br>(1.189) | 1-20UNEF       |
| 20         | 1 1/4-18UNEF       | 76.98<br>(3.031) | 37.28<br>(1.468) | 22.5<br>(.886)  | 33.3<br>(1.311) | 1 3/16-18UNEF  |
| 22         | 1 3/8-18UNEF       | 76.98<br>(3.031) | 40.48<br>(1.594) | 24.1<br>(.949)  | 33.3<br>(1.311) | 1 3/16-18UNEF  |
| 24         | 1 1/2-18UNEF       | 86.51<br>(3.406) | 43.63<br>(1.718) | 25.6<br>(1.008) | 36.5<br>(1.437) | 1 7/16-18UNEF  |
| 28         | 1 3/4-18UNS        | 86.51<br>(3.406) | 50.0<br>(1.969)  | 28.8<br>(1.134) | 36.5<br>(1.437) | 1 7/16-18UNEF  |
| 32         | 2-18UNS            | 95.25<br>(3.750) | 56.33<br>(2.218) | 32.8<br>(1.291) | 44.4<br>(1.748) | 1 3/4-18UNS    |
| 36         | 2 1/4-16UN         | 100.0<br>(3.937) | 62.68<br>(2.468) | 36.0<br>(1.417) | 49.2<br>(1.937) | 2-18UNS        |

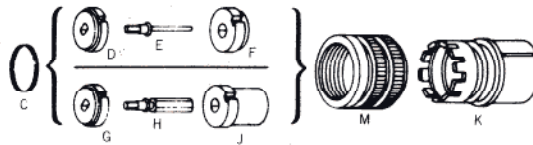
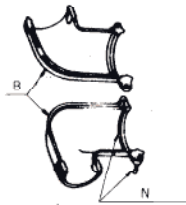
# Assembly



**DMS3106B**



**DMS3108B**



- A : Back Shell
- B : Split Back Shell
- C : Retaining Ring
- D : Pin Rear Insert
- E : Pin Contact
- F : Pin Front Insert
- G : Socket Rear Insert
- H : Socket Contact
- J : Socket Front Insert
- K : Front Shell
- L : Shell
- M : Coupling Ring
- N : Screws

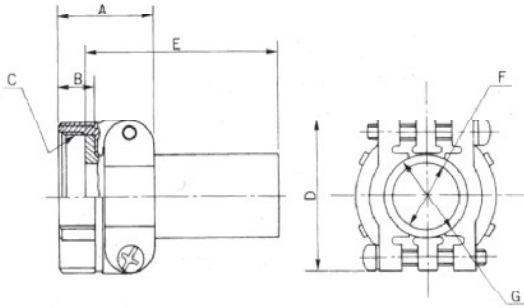
# DMS Series



Unit : mm(inch)

## DMS3057-XXA

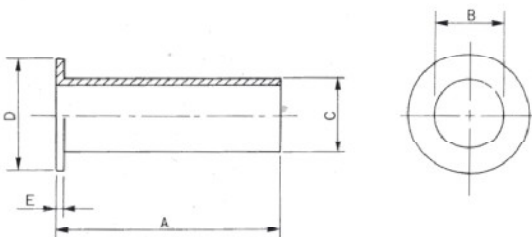
Cable Clamp



| Part Number | Shell Size | A                | B               | Threads C    | D                | E               | F                | G                | Bushing Part Number |
|-------------|------------|------------------|-----------------|--------------|------------------|-----------------|------------------|------------------|---------------------|
| DMS3057-4A  | 10SL, 12S  | 20.62<br>(.812)  | 10.31<br>(.406) | 5/8-24UNEF   | 22.23<br>(.875)  | 69.8<br>(2.748) | 5.59<br>(.220)   | 7.67<br>(.302)   | AN3420-4            |
| DMS3057-6A  | 14S        | 22.23<br>(.875)  | 10.31<br>(.406) | 3/4-20UNEF   | 26.97<br>(1.062) | 66.7<br>(2.626) | 7.92<br>(.312)   | 10.85<br>(.427)  | AN3420-6            |
| DMS3057-8A  | 16S, 16    | 23.83<br>(.938)  | 10.31<br>(.406) | 7/8-20UNEF   | 29.36<br>(1.156) | 63.5<br>(2.500) | 11.10<br>(.437)  | 14.02<br>(.552)  | AN3420-8            |
| DMS3057-10A | 18         | 23.83<br>(.938)  | 10.31<br>(.406) | 1-20UNEF     | 31.75<br>(1.250) | 60.3<br>(2.374) | 14.27<br>(.562)  | 15.62<br>(.615)  | AN3420-10           |
| DMS3057-12A | 20, 22     | 23.83<br>(.938)  | 10.31<br>(.406) | 1 1/8-18UNEF | 37.31<br>(1.469) | 57.2<br>(2.252) | 15.88<br>(.625)  | 18.80<br>(.740)  | AN3420-12           |
| DMS3057-16A | 24, 28     | 26.19<br>(1.031) | 10.31<br>(.406) | 1 1/8-18UNEF | 42.88<br>(1.688) | 54.0<br>(2.126) | 19.05<br>(.750)  | 23.55<br>(.927)  | AN3420-16           |
| DMS3057-20A | 32         | 27.79<br>(1.094) | 11.91<br>(.469) | 1 3/4-18UNS  | 51.59<br>(2.031) | 50.8<br>(2.000) | 23.80<br>(.937)  | 31.50<br>(1.240) | AN3420-20           |
| DM3057-24A  | 36         | 29.36<br>(1.156) | 13.49<br>(.531) | 2-18UNS      | 57.94<br>(2.281) | 47.6<br>(1.874) | 31.75<br>(1.250) | 34.67<br>(1.365) | AN3420-24           |

## AN3420-XX

Bushing



| Part Number | A               | B                | C                | D               | E             |
|-------------|-----------------|------------------|------------------|-----------------|---------------|
| AN3420-4    | 69.8<br>(2.748) | 5.59<br>(.220)   | 7.67<br>(.302)   | 14.5<br>(.571)  | 2.3<br>(.091) |
| AN3420-6    | 66.7<br>(2.626) | 7.92<br>(.312)   | 10.85<br>(.427)  | 17.5<br>(.689)  | 2.3<br>(.091) |
| AN3420-8    | 63.5<br>(2.500) | 11.10<br>(.437)  | 14.02<br>(.552)  | 20.8<br>(.819)  | 2.3<br>(.091) |
| AN3420-10   | 60.3<br>(2.374) | 14.27<br>(.562)  | 15.62<br>(.615)  | 23.7<br>(.933)  | 2.3<br>(.091) |
| AN3420-12   | 57.2<br>(2.252) | 15.88<br>(.625)  | 18.80<br>(.740)  | 28.2<br>(1.110) | 2.3<br>(.091) |
| AN3420-16   | 54.0<br>(2.126) | 19.05<br>(.750)  | 23.55<br>(.927)  | 35.0<br>(1.378) | 2.9<br>(.114) |
| AN3420-20   | 50.8<br>(2.000) | 23.80<br>(.937)  | 31.50<br>(1.240) | 42.8<br>(1.695) | 2.9<br>(.114) |
| AN3420-24   | 47.6<br>(1.874) | 31.75<br>(1.250) | 34.67<br>(1.365) | 48.8<br>(1.921) | 2.9<br>(.114) |