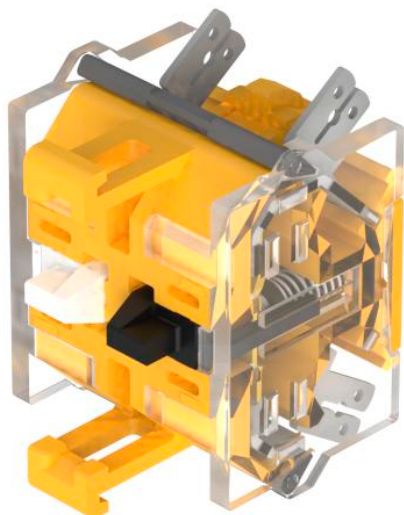


EAO – Your Expert Partner for Human Machine Interfaces

704.905.1 - Switching element

704.905.1 - Switching element



Attention: The preview is based on a sample product. This can differ from your current configuration.

Attribute

Contacts	1 NO
Contact material	Silver
Operating Voltage/Current	
Switching current	6 A
Switching system	Snap-action switching element
Switching voltage	500 V
Switching voltage kind of	AC
Terminal	Plug-in terminal
Weight	0.021 kg
Switching rating	500 V AC @ 6 A

Wiring diagrams



Additional information

For the third switching element the terminal marking insert is to be ordered separately

Contacts: NC = Normally closed, NO = Normally open