

# GN 283 | Pivoting connecting clamps

Aluminium



- 1
- 2
- 3
- 4
- 5
- 6
- 7
- 8
- 9
- 10
- 11
- 12
- 13
- 14
- 15
- 16
- 17
- 18

## MATERIAL

Aluminium, matte finish.  
AISI 304 stainless steel screws and nuts.

## STANDARD EXECUTIONS

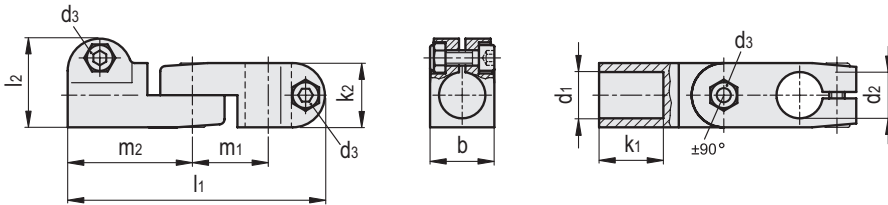
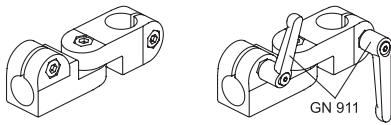
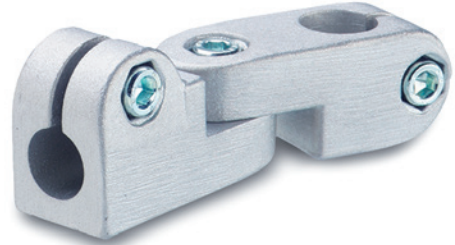
- **GN 283-BL**: natural aluminium.
- **GN 283-SW**: aluminium, epoxy resin coating, RAL 9005 black colour.

## FEATURES AND APPLICATIONS

The assembly hole of GN 283 connecting clamps allows an excellent match with tubes GN 990 (see page 1368).  
GN 283 connecting clamps are an assembly of connecting clamps GN 273 (see page 1343) and GN 275 (see page 1346).  
The clamping screws d3 may be replaced by clamping kits GN 911 (see page 1372).

## SPECIAL EXECUTIONS ON REQUEST

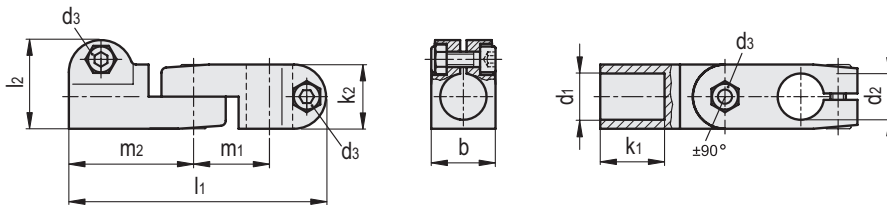
Different combinations of holes d1/d2.



## GN 283-BL

Code	Description	b	d1	d2	d3	k1	k2	l1	l2	m1	m2	d3 Clamping kit	
GN.61711	GN 283-B12-B12-2-BL	25	12	12	M6	25	25	100	34.5	29.5	48.5	GN 911-M6-22	156
GN.61712	GN 283-B12-B14-2-BL	25	12	14	M6	25	25	100	34.5	29.5	48.5	GN 911-M6-22	153
GN.61713	GN 283-B12-B16-2-BL	25	12	16	M6	25	25	100	34.5	29.5	48.5	GN 911-M6-22	150
GN.61714	GN 283-B12-B18-2-BL	25	12	18	M6	25	25	100	34.5	29.5	48.5	GN 911-M6-22	147
GN.61732	GN 283-B14-B12-2-BL	25	14	12	M6	25	25	100	34.5	29.5	48.5	GN 911-M6-22	143
GN.61731	GN 283-B14-B14-2-BL	25	14	14	M6	25	25	100	34.5	29.5	48.5	GN 911-M6-22	140
GN.61733	GN 283-B14-B16-2-BL	25	14	16	M6	25	25	100	34.5	29.5	48.5	GN 911-M6-22	137
GN.61734	GN 283-B14-B18-2-BL	25	14	18	M6	25	25	100	34.5	29.5	48.5	GN 911-M6-22	134
GN.61742	GN 283-B16-B12-2-BL	25	16	12	M6	25	25	100	34.5	29.5	48.5	GN 911-M6-22	141
GN.61749	GN 283-B16-B14-2-BL	25	16	14	M6	25	25	100	34.5	29.5	48.5	GN 911-M6-22	138
GN.61751	GN 283-B16-B16-2-BL	25	16	16	M6	25	25	100	34.5	29.5	48.5	GN 911-M6-22	135
GN.61758	GN 283-B16-B18-2-BL	25	16	18	M6	25	25	100	34.5	29.5	48.5	GN 911-M6-22	132
GN.61760	GN 283-B18-B12-2-BL	25	18	12	M6	25	25	100	34.5	29.5	48.5	GN 911-M6-22	136
GN.61765	GN 283-B18-B14-2-BL	25	18	14	M6	25	25	100	34.5	29.5	48.5	GN 911-M6-22	133
GN.61769	GN 283-B18-B16-2-BL	25	18	16	M6	25	25	100	34.5	29.5	48.5	GN 911-M6-22	130
GN.61771	GN 283-B18-B18-2-BL	25	18	18	M6	25	25	100	34.5	29.5	48.5	GN 911-M6-22	127

Connecting clamps



## GN 283-SW

Code	Description	b	d1	d2	d3	k1	k2	l1	l2	m1	m2	d3 Clamping kit	⚖
GN.61716	GN 283-B12-B12-2-SW	25	12	12	M6	25	25	100	34.5	29.5	48.5	GN 911-M6-22	156
GN.61717	GN 283-B12-B14-2-SW	25	12	14	M6	25	25	100	34.5	29.5	48.5	GN 911-M6-22	153
GN.61718	GN 283-B12-B16-2-SW	25	12	16	M6	25	25	100	34.5	29.5	48.5	GN 911-M6-22	150
GN.61719	GN 283-B12-B18-2-SW	25	12	18	M6	25	25	100	34.5	29.5	48.5	GN 911-M6-22	147
GN.61737	GN 283-B14-B12-2-SW	25	14	12	M6	25	25	100	34.5	29.5	48.5	GN 911-M6-22	143
GN.61736	GN 283-B14-B14-2-SW	25	14	14	M6	25	25	100	34.5	29.5	48.5	GN 911-M6-22	140
GN.61738	GN 283-B14-B16-2-SW	25	14	16	M6	25	25	100	34.5	29.5	48.5	GN 911-M6-22	137
GN.61739	GN 283-B14-B18-2-SW	25	14	18	M6	25	25	100	34.5	29.5	48.5	GN 911-M6-22	134
GN.61747	GN 283-B16-B12-2-SW	25	16	12	M6	25	25	100	34.5	29.5	48.5	GN 911-M6-22	141
GN.61750	GN 283-B16-B14-2-SW	25	16	14	M6	25	25	100	34.5	29.5	48.5	GN 911-M6-22	138
GN.61756	GN 283-B16-B16-2-SW	25	16	16	M6	25	25	100	34.5	29.5	48.5	GN 911-M6-22	135
GN.61759	GN 283-B16-B18-2-SW	25	16	18	M6	25	25	100	34.5	29.5	48.5	GN 911-M6-22	132
GN.61763	GN 283-B18-B12-2-SW	25	18	12	M6	25	25	100	34.5	29.5	48.5	GN 911-M6-22	136
GN.61767	GN 283-B18-B14-2-SW	25	18	14	M6	25	25	100	34.5	29.5	48.5	GN 911-M6-22	133
GN.61770	GN 283-B18-B16-2-SW	25	18	16	M6	25	25	100	34.5	29.5	48.5	GN 911-M6-22	130
GN.61776	GN 283-B18-B18-2-SW	25	18	18	M6	25	25	100	34.5	29.5	48.5	GN 911-M6-22	127