



1

BASE FLANGE

Die-cast zinc alloy with epoxy resin coating, black colour.

Two holes for clamping by means of countersunk head screws.



2

PLUNGER

AISI 303 stainless steel.



3

SPRING

AISI 301 stainless steel.



4

KNOB

Polyamide based (PA) technopolymer, black colour, matte finish.



5

STANDARD EXECUTIONS- **GN 822.8-B**: without rest position.- **GN 822.8-C**: with rest position: pull the knob and turn it by 30°.

6



7

FEATURES AND APPLICATIONS

GN 822.8 mini indexing plungers have compact dimensions and are particularly suitable for assembly on thin sheets.



8



9



10



11



12



13



14



15



16



17



18



19

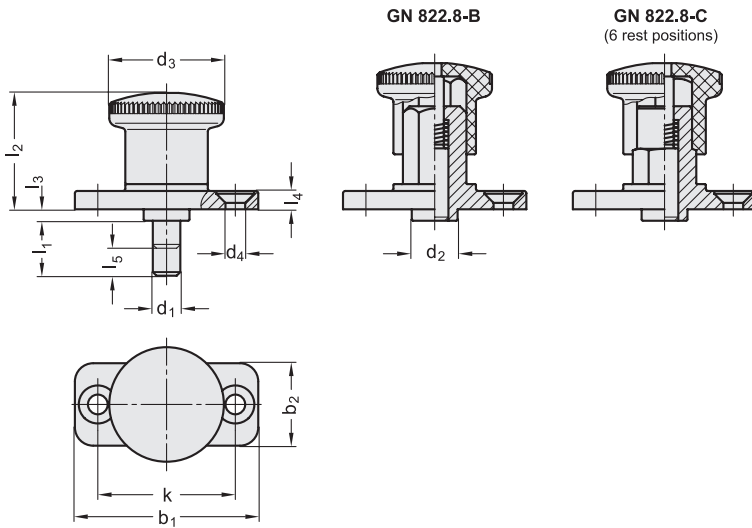


20



21





Code	Description	d1 Plunger h9 Hole +0.08 +0.03	d2 -0.15	d3	d4	b1	b2	k	l1	l2	l3	l4	l5	Spring preload [N]	Spring max load [N]	⚖
GN.36551	GN 822.8-4-5-B	4	8	21	4.3	35	15	25	5	20.5	2	4	5	4	12	23
GN.36555	GN 822.8-4-10-B	4	8	21	4.3	35	15	25	10	20.5	2	4	5	4	12	23
GN.36561	GN 822.8-5-6-B	5	10	25	4.3	40	18	30	6	25.5	2.5	4	6	6	16	30
GN.36565	GN 822.8-5-12-B	5	10	25	4.3	40	18	30	12	25.5	2.5	4	6	6	16	40
GN.36571	GN 822.8-6-6-B	6	10	25	4.3	40	18	30	6	25.5	2.5	4	6	6	16	39
GN.36575	GN 822.8-6-12-B	6	10	25	4.3	40	18	30	12	25.5	2.5	4	6	6	16	86
GN.36581	GN 822.8-8-10-B	8	14	33	5.3	50	23	38	10	35	2.5	5	10	11	35	94
GN.36585	GN 822.8-8-20-B	8	14	33	5.3	50	23	38	20	35	2.5	5	10	11	35	84
GN.36591	GN 822.8-10-10-B	10	14	33	5.3	50	23	38	10	35	2.5	5	10	11	35	96
GN.36595	GN 822.8-10-20-B	10	14	33	5.3	50	23	38	20	35	2.5	5	10	11	35	102
GN.36553	GN 822.8-4-5-C	4	8	21	4.3	35	15	25	5	20.5	2	4	5	4	12	22
GN.36557	GN 822.8-4-10-C	4	8	21	4.3	35	15	25	10	20.5	2	4	5	4	12	23
GN.36563	GN 822.8-5-6-C	5	10	25	4.3	40	18	30	6	25.5	2.5	4	6	6	16	30
GN.36567	GN 822.8-5-12-C	5	10	25	4.3	40	18	30	12	25.5	2.5	4	6	6	16	39
GN.36573	GN 822.8-6-6-C	6	10	25	4.3	40	18	30	6	25.5	2.5	4	6	6	16	38
GN.36577	GN 822.8-6-12-C	6	10	25	4.3	40	18	30	12	25.5	2.5	4	6	6	16	86
GN.36583	GN 822.8-8-10-C	8	14	33	5.3	50	23	38	10	35	2.5	5	10	11	35	93
GN.36587	GN 822.8-8-20-C	8	14	33	5.3	50	23	38	20	35	2.5	5	10	11	35	84
GN.36593	GN 822.8-10-10-C	10	14	33	5.3	50	23	38	10	35	2.5	5	10	11	35	95
GN.36597	GN 822.8-10-20-C	10	14	33	5.3	50	23	38	20	35	2.5	5	10	11	35	101

