



Figure similar

SURGE SUPPRESSOR./RC ELEMENT FOR CONTACTOR MOD.S6/S10/S12 FOR US = AC 400-600 V

General technical data:

product brand name		SIRIUS
Product designation		surge suppressor
Design of the surge suppressor		with RC elements

Control circuit/ Control:

Type of voltage of the control supply voltage		AC
Control supply voltage frequency		
• 1 Rated value	Hz	50
• 2 Rated value	Hz	60
Control supply voltage 1		
• with AC		
— at 50 Hz Initial rated value	V	400
— at 50 Hz Final rated value	V	600
— at 60 Hz Final rated value	V	600
— at 60 Hz Initial rated value	V	400

Certificates/ approvals:

General Product Approval	Functional Safety/Safety of Machinery	Declaration of Conformity	Test Certificates
--------------------------	---------------------------------------	---------------------------	-------------------



[Type Examination](#)



[Special Test Certificate](#)

Shipping Approval



Shipping Approval	other
-------------------	-------



[Confirmation](#)

[Environmental Confirmations](#)

[other](#)

Further information

Information- and Downloadcenter (Catalogs, Brochures,...)

<http://www.siemens.com/industrial-controls/catalogs>

Industry Mall (Online ordering system)

<http://www.siemens.com/industrymall>

Cax online generator

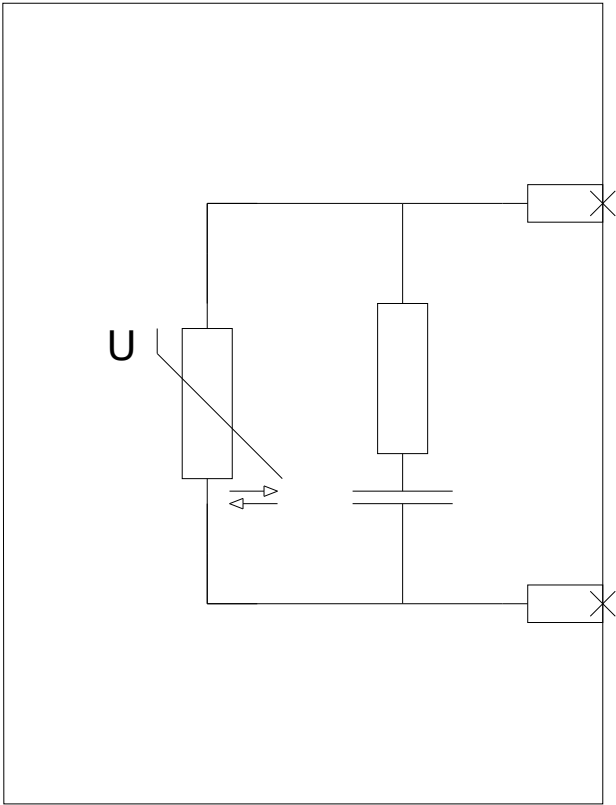
<http://support.automation.siemens.com/WW/CAXorder/default.aspx?lang=en&mlfb=3RT19561CF00>

Service&Support (Manuals, Certificates, Characteristics, FAQs,...)

<http://support.automation.siemens.com/WW/view/en/3RT19561CF00/all>

Image database (product images, 2D dimension drawings, 3D models, device circuit diagrams, EPLAN macros, ...)

<http://www.automation.siemens.com/bilddb/index.aspx?attID9=3RT19561CF00&lang=en>



last modified:

09.03.2015