



ALPHA 400 DIN, WALL-MOUNTING DISTRIBUTOR,  
UP-CUBICLE, RAL 9016, IP31, SK1, H=1250 W=800  
D=210

Protection class		
Protection class IP		IP31
Mechanical Design		
Height	mm	1 250
Width	mm	800
Depth	mm	210
Installation depth	mm	210
Material / of the enclosure		sheet steel/plastic

General Product Approval	Declaration of Conformity	Test Certificates
--------------------------	---------------------------	-------------------



GOST

[other](#)



EG-Konf.

[Type Test Certificates/Test Report](#)

[Special Test Certificate](#)

## Further information

**Information- and Downloadcenter (Catalogs, Brochures,...)**

<http://www.siemens.com/lowvoltage/catalogs>

**Industry Mall (Online ordering system)**

<https://eb.automation.siemens.com/mall/en/WW/Catalog/Product/8GK11216KK32>

**Service&Support (Manuals, Certificates, Characteristics, FAQs,...)**

<http://support.automation.siemens.com/WW/view/en/8GK11216KK32/all>

**Image database (product images, 2D dimension drawings, 3D models, device circuit diagrams, ...)**

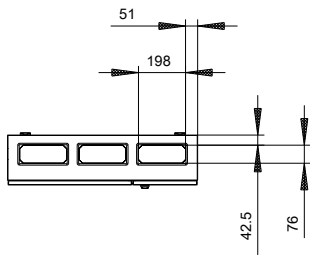
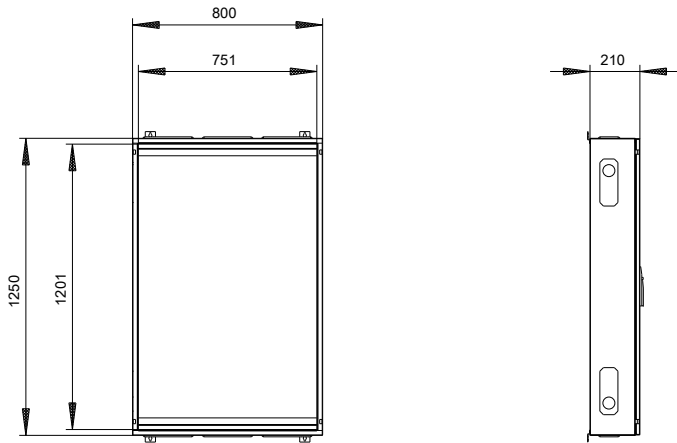
[http://www.automation.siemens.com/bilddb/cax\\_en.aspx?mlfb=8GK11216KK32](http://www.automation.siemens.com/bilddb/cax_en.aspx?mlfb=8GK11216KK32)

**CAX-Online-Generator**

<http://www.siemens.com/cax>

**Tender specifications**

<http://ausschreibungstexte.siemens.com/tiplv>



**last modified:**

11.03.2015