

SIVACON SICUBE ROOF GALVANISED 2MM WIDTH
800 DEPTH 800 WITH VENTILATION OPENING
WITHOUT SEAL



Figure similar

Model

Design of the surface		untreated
------------------------------	--	-----------

Protection class

Protection class IP		IP40
----------------------------	--	------

Suitability

Suitability for use / for outside use		No
---------------------------------------	--	----

Appearance

Color		pebble grey
--------------	--	-------------

Product details

Product component		
• cable entry		No
• ventilation		Yes

Mechanical Design

Width	mm	800
Depth	mm	800
Material		steel

General Product Approval	EMC	Declaration of Conformity	Test Certificates	other
---------------------------------	------------	----------------------------------	--------------------------	--------------



[other](#)



[Special Test Certificate](#)

[other](#)

Further information

Information- and Downloadcenter (Catalogs, Brochures,...)

<http://www.siemens.com/lowvoltage/catalogs>

Industry Mall (Online ordering system)

<https://eb.automation.siemens.com/mall/en/WW/Catalog/Product/8MF10882UD300A>

Service&Support (Manuals, Certificates, Characteristics, FAQs,...)

<http://support.automation.siemens.com/WW/view/en/8MF10882UD300A/all>

Image database (product images, 2D dimension drawings, 3D models, device circuit diagrams, ...)

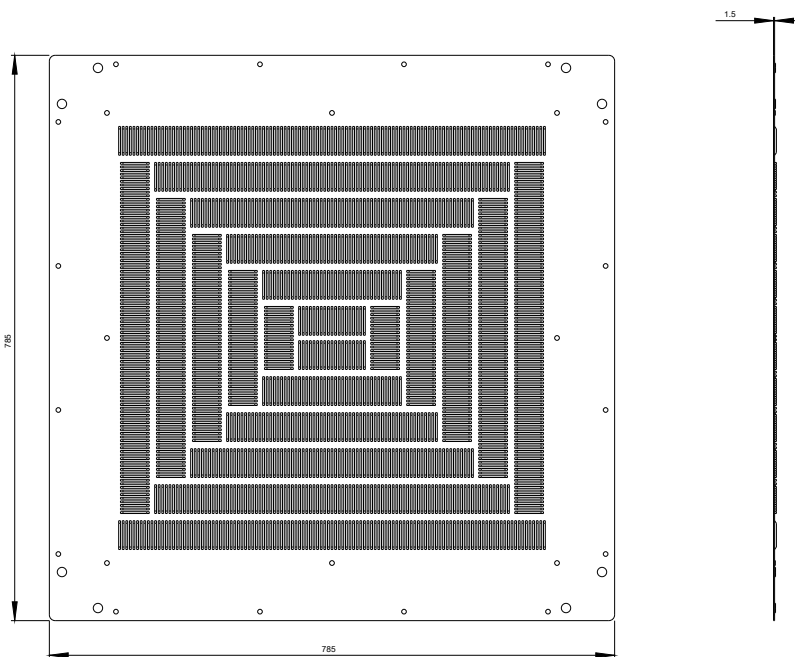
http://www.automation.siemens.com/bilddb/cax_en.aspx?mfb=8MF10882UD300A

CAX-Online-Generator

<http://www.siemens.com/cax>

Tender specifications

<http://ausschreibungstexte.siemens.com/tiplv>



last modified:

11.03.2015