

[Home](https://www.dfrobot.com/) (https://www.dfrobot.com/) > [Sensors & Modules](https://www.dfrobot.com/category-156.html) (https://www.dfrobot.com/category-156.html) > [Sensors](https://www.dfrobot.com/category-36.html) (https://www.dfrobot.com/category-36.html) > [Temperature & Humidity Sensor](https://www.dfrobot.com/category-64.html) (https://www.dfrobot.com/category-64.html)



(<https://www.dfrobot.com/product-1636.html>)

## Introduction

---

This is a SHT20 I2C temperature & humidity sensor with waterproof probe. It comes with the 4C CMOSens® SHT20 temperature & humidity sensor chip, and the probe has gone through dual waterproof protection. The SHT20 I2C temperature & humidity sensor adopt Sensirion new technique. Besides the capacitive type humidity sensor and the band gap temperature sensor, the chip contains an amplifier, A/D converter, OTP memory and a digital processing unit. To compare with early SHT1x series and SHT7x series, SHT20 shows better reliability and long-term stability. It can measure surrounding environment temperature and relative air humidity precisely. The Arduino SHT20 waterproof temperature & humidity sensor adopts dual waterproof protection. The inner PCB has perfusion and encapsulation protection, and the probe enclosure is made of PE waterproof materials. This is a special waterproof breathable material that allows water molecules to seep in, blocking water droplets from seeping in. The sensor won't be damaged even if it is submerged in water for a long time. There is a built-in 10k Pull-up resistor and 0.1uf filter capacitor, so It can be used directly with the microcontroller such as Arduino. Recommend DFRobot Gravity 4Pin Sensor Adapter (<https://www.dfrobot.com/product-1626.html>), it is quite convenient.'

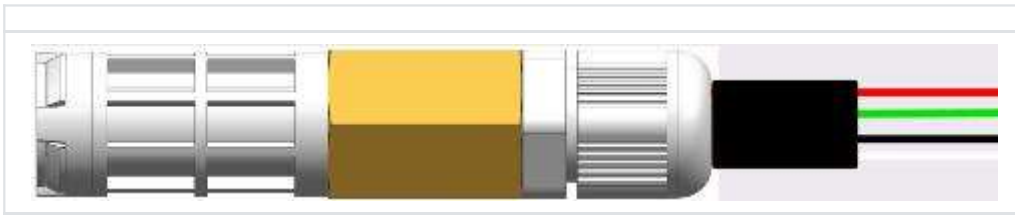
## Specification

---

- Operating Voltage: 3.3V/5V

- Communication Interface: I2C / IIC
- Protection Class: waterproof anti-condensation
- RH Response Time: 8s (tau63%)
- Accuracy:  $\pm 3\%$  RH /  $\pm 0.3$  °C
- Measuring Range: 0-100% RH / -40-125 °C
- Dimension: 73mm \* 17mm / 2.87 \* 0.67 inches
- Weight: 44g

## Board Overview



Num	Label	Description
1	Red	VCC
2	Green	GND
3	Black (Blue)	SDA
4	White (Yellow)	SCL

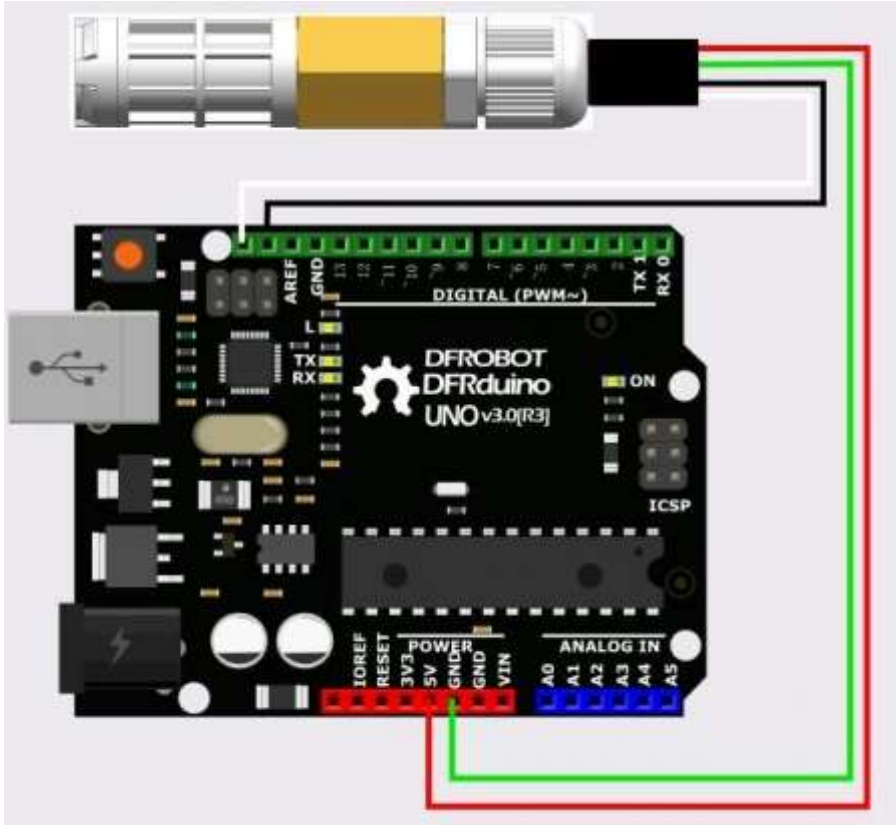
## Tutorial

In this section, we'll use Arduino to drive SHT20 I2C Temperature & Humidity Sensor (Waterproof Probe)

### Requirements

- **Hardware**
  - DFRduino UNO (<https://www.dfrobot.com/product-838.html>) (or similar) x 1
  - SHT20 I2C Temperature & Humidity Sensor
  - M-M/F-M/F-F Jumper wires
- **Software**
  - Arduino IDE, [<https://www.arduino.cc/en/Main/Software> (<https://www.arduino.cc/en/Main/Software>)] Click to Download Arduino IDE from Arduino®]

## Connection Diagram



## Sample Code

Download the DFRobot Arduino SHT20 library  
([https://codeload.github.com/DFRobot/DFRobot\\_SHT20/zip/master](https://codeload.github.com/DFRobot/DFRobot_SHT20/zip/master))

How to install Libraries in Arduino IDE  
(<https://www.arduino.cc/en/Guide/Libraries#.UxU8mdzF9H0>)

```

/#!/
 * @file DFRobot_SHT20_test.ino
 * @brief DFRobot's SHT20 Humidity And Temperature Sensor Module
 * @n This example demonstrates how to read the user registers to display resolution a
 * Uses the SHT20 library to display the current humidity and temperature.
 * Open serial monitor at 9600 baud to see readings.
 * Errors 998 if not sensor is detected. Error 999 if CRC is bad.
 * Hardware Connections:
 * -VCC = 3.3V
 * -GND = GND
 * -SDA = A4 (use inline 330 ohm resistor if your board is 5V)
 * -SCL = A5 (use inline 330 ohm resistor if your board is 5V)
 */

#include <Wire.h>
#include "DFRobot_SHT20.h"

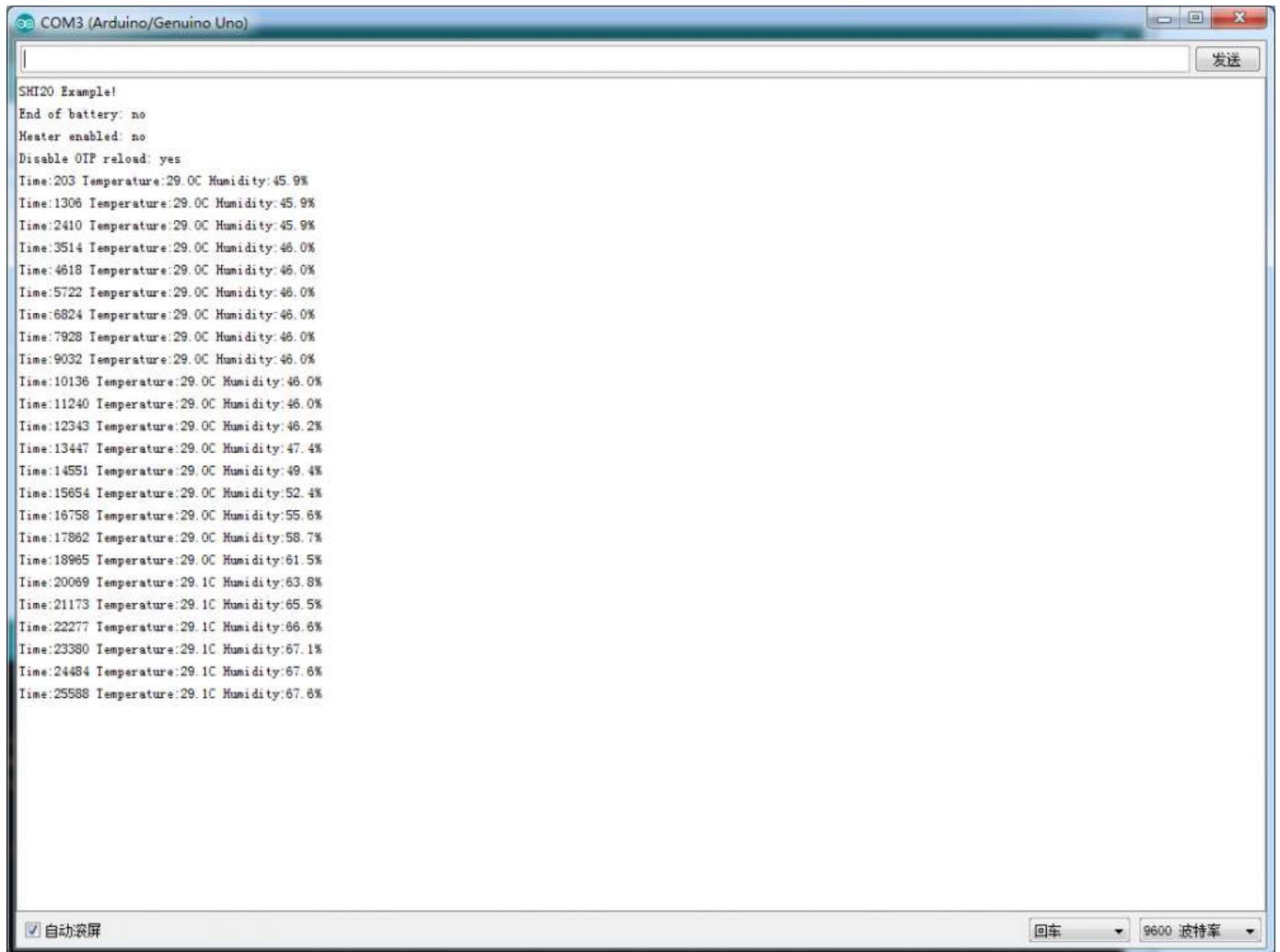
DFRobot_SHT20 sht20;

void setup()
{
  Serial.begin(9600);
  Serial.println("SHT20 Example!");
  sht20.initSHT20(); // Init SHT20 Sensor
  delay(100);
  sht20.checkSHT20(); // Check SHT20 Sensor
}

void loop()
{
  float humd = sht20.readHumidity(); // Read Humidity
  float temp = sht20.readTemperature(); // Read Temperature
  Serial.print("Time:");
  Serial.print(millis());
  Serial.print(" Temperature:");
  Serial.print(temp, 1);
  Serial.print("C");
  Serial.print(" Humidity:");
  Serial.print(humd, 1);
  Serial.print("%");
  Serial.println();
  delay(1000);
}

```

## Expected Results



The screenshot shows a serial monitor window titled "COM3 (Arduino/Genuino Uno)". The window contains the following text:

```
SHT20 Example!  
End of battery: no  
Heater enabled: no  
Disable OTP reload: yes  
Time:203 Temperature:29.0C Humidity:45.9%  
Time:1306 Temperature:29.0C Humidity:45.9%  
Time:2410 Temperature:29.0C Humidity:45.9%  
Time:3514 Temperature:29.0C Humidity:46.0%  
Time:4618 Temperature:29.0C Humidity:46.0%  
Time:5722 Temperature:29.0C Humidity:46.0%  
Time:6824 Temperature:29.0C Humidity:46.0%  
Time:7928 Temperature:29.0C Humidity:46.0%  
Time:9032 Temperature:29.0C Humidity:46.0%  
Time:10136 Temperature:29.0C Humidity:46.0%  
Time:11240 Temperature:29.0C Humidity:46.0%  
Time:12343 Temperature:29.0C Humidity:46.2%  
Time:13447 Temperature:29.0C Humidity:47.4%  
Time:14551 Temperature:29.0C Humidity:49.4%  
Time:15654 Temperature:29.0C Humidity:52.4%  
Time:16758 Temperature:29.0C Humidity:55.6%  
Time:17862 Temperature:29.0C Humidity:58.7%  
Time:18965 Temperature:29.0C Humidity:61.5%  
Time:20069 Temperature:29.1C Humidity:63.8%  
Time:21173 Temperature:29.1C Humidity:65.5%  
Time:22277 Temperature:29.1C Humidity:66.6%  
Time:23380 Temperature:29.1C Humidity:67.1%  
Time:24484 Temperature:29.1C Humidity:67.6%  
Time:25588 Temperature:29.1C Humidity:67.6%
```

At the bottom of the window, there is a checkbox labeled "自动滚屏" (Auto scroll) which is checked, and a dropdown menu for "波特率" (Baud rate) set to "9600".

## FAQ

Q1. How to measure the soil moisture?.

\*\* A.\*\* Soil moisture is defined as: Get 1 kg soil samples, thoroughly dry it, the ratio between reduced weight (water weight) and 1 kg weight is soil moisture. It totally different to the air humidity.

For any questions, advice or cool ideas to share, please visit the **DFRobot Forum** (<https://www.dfrobot.com/forum/>).

## More Documents



Get SHT20 I2C Temperature & Humidity Sensor ([https://www.dfrobot.com/product-](https://www.dfrobot.com/product-1636.html)

1636.html) from DFRobot Store or **DFRobot Distributor**. (<https://www.dfrobot.com/index.php?>

[https://wiki.dfrobot.com/SHT20\\_I2C\\_Temperature\\_&\\_Humidity\\_Sensor\\_\\_Waterproof\\_Probe\\_\\_SKU\\_\\_SEN0227#target\\_5](https://wiki.dfrobot.com/SHT20_I2C_Temperature_&_Humidity_Sensor__Waterproof_Probe__SKU__SEN0227#target_5)

route=information/distributorslogo)