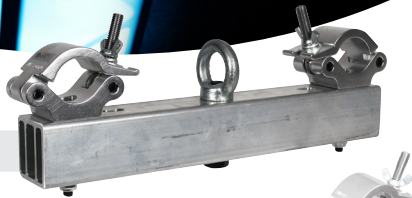




**NEW**

### F33/34 Hanging Adaptor

Order code GL0055



### 28mm Spigot with Truss Adaptor

Order code GL3003



### Aluminium Truss Cleaner

Order code FLUI40



### Truss Tool

Order code GL3030



## Quad & Tri Truss Sleeves



These quad and tri truss sleeves provide the perfect coverage for your truss set-ups, and are available in a variety of versions. The black versions are particularly good at disguising truss in darker environments, whilst the white ones give a clean look, ideal for wedding and marquee environments. When utilising the white sleeves, why not add a slimline style par can or light effect within the base area of your truss, illuminating it from within. The side velcro strip allows for easy installation onto your truss, saving time on set up.



### White Quad Versions

### Black Quad Versions

Order code	Version	Order code	Version
LEDJ247	2 Way 90° Corner	LEDJ275	2 Way 90° Corner
LEDJ247A	3 Way 90° Corner	LEDJ275A	3 Way 90° Corner
LEDJ243	1m Straight	LEDJ270	1m Straight
LEDJ243A	1.5m Straight	LEDJ271	1.5m Straight
LEDJ244	2m Straight	LEDJ272	2m Straight
LEDJ245	3m Straight	LEDJ273	3m Straight
LEDJ246	25m Straight	LEDJ274	25m Straight

### White Tri Versions

Order code	Version
LEDJ240	1m Straight
LEDJ240A	1.5m Straight
LEDJ241	2m Straight
LEDJ242	3m Straight



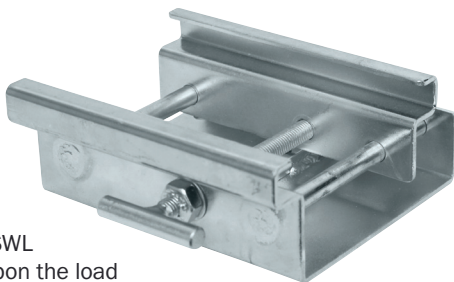
## Marquee Clamp 150kg SWL Zinc



Designed for use in clear span type marquees with aluminium kader (cader) groove style beams. This clamp can be used for suspending lighting rigs, loudspeakers and props.

### Features

- M10, M12 and M14 fixing points
- 115mm max. beam width
- Zinc plated
- Up to 150kg SWL (dependant upon the load capacity of the structure)



### Specifications

- Dimensions: 60 x 150 x 158mm
- Weight: 1.3kg

Order code CLAM12