

# Vibrator Control Type RS1K

## RS1K



The vibrator control RS1K is a compact multiple time relay for triggering of vibrators in suction plants. In order to be able to operate suction plants at an optimum, the filters which get clogged by sawdust, chips or dust, have to be dedusted by vibration from

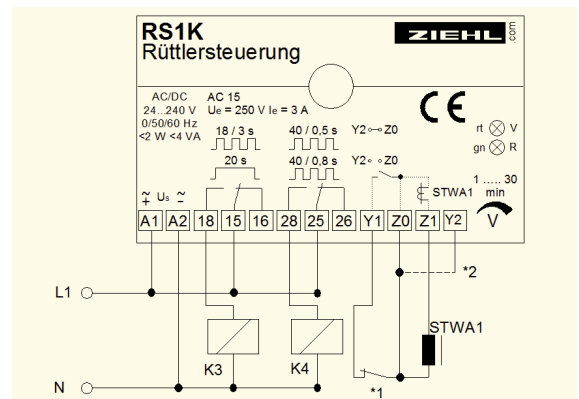
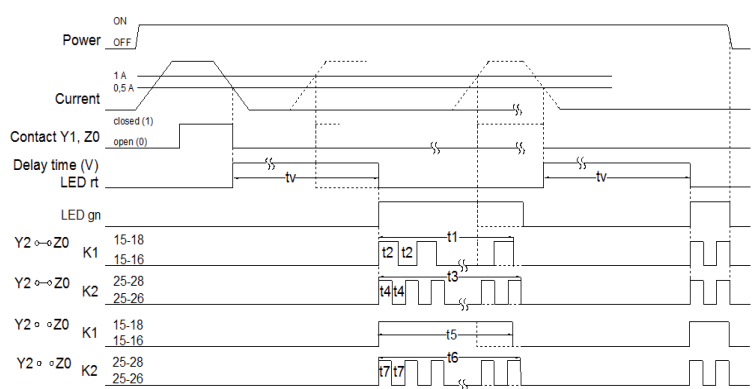
time to time. The vibration action is by no means to be carried out the suction running or while slowing down the ventilator. If suctioning is started during vibration, the process is immediately to be interrupted. Prior to starting the vibration action, an adjustable deceleration time is running to delay the ventilator before start of vibration. This means that short stoppages can be bypassed without being obliged to carry out a vibration every time.

- Start of deceleration time by break contact at Y1/Z0 (e.g. from contactor suction motor)
- Starting of deceleration time through current transformer STWA1 at Z0/Z1 (e.g. L1 from suction motor)
- adjustable deceleration time 1...30 min.

- Relay K1: continuous vibration 20 s or impulse-vibration 18 s with 3 s clock
- Relay K2: impulse-vibration 40 s with clock 0,5 s or 0,8 s (for magnet valves)
- LED (red) signals deceleration time
- LED (green) signals vibration action
- automatic interruption of the vibration action when starting the suction process.

Order-number: Z224302

Function diagram:



## Technical Data

Rated Voltage Supply  $U_s$

AC/DC 24...240 V, AC 19-264 V, DC 20-297 V < 2VA

Input Y1/Z0, Y2/Z0  
 Input Z1/Z0  
 Switching current  
 Overload Capacity of transformer

Contact, Breaker (nc), 18 V, 3 mA  
 Current Transformer STWA1  
 ON  $\geq$  AC 1 A, OFF  $\leq$  AC 0,4 A  
 max. 100 A continuous, 300 A / 10 s

Relay-Output  
 Type of Contact

2 x 1 co  
 Type 2 (see general technical informations)

Test Conditions  
 adm. ambient temperature

see "general technical informations"  
 -20...+55°C

Dimensions H x B x T  
 Fitting position

Design K: 75 x 22,5 x 115 [mm]  
 on 35 mm standard rail according to DIN EN 60 715  
 or screws M4 (not included in delivery scope)  
 IP 30/IP 20

Protection Housing/Terminals