

# Subminiature Pushbutton Switches



## Specifications:

Contact rating:	max. 48 V AC/DC, 0,4 VA / max. 50 mA min. 20 mV AC/DC, 1 $\mu$ A
Contact resistance:	< 50 m $\Omega$
Insulation resistance:	> 500 M $\Omega$ at 250 V DC
Dielectric strength:	500 V, 50 Hz for the duration of 1 minute
Operating temperature:	- 20° to + 80° C
Mechanical life:	minimum 60000 operations
Contacts:	phosphor bronze, gold-plated over nickel barrier
Terminals:	APE – PC terminals, crimped, phosphor bronze, tin-plated over nickel barrier AP – PC terminals, phosphor bronze, gold-plated over nickel barrier
Material:	case: PBT, meets UL 94 V-0, washable metal parts: brass, nickel-plated
Mounting:	on pc-board
Soldering conditions:	auto-soldering – max.: 3 sec, 245° C $\pm$ 10° C

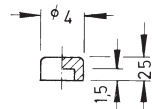
3

The stability can be improved by using a supporting bracket.

## Accessories:

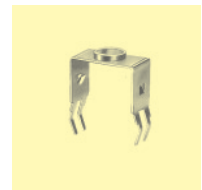
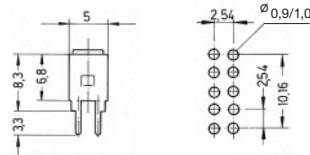
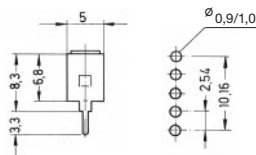
### Plastic caps

black	KA 3105
green	KA 3106
grey	KA 3107
yellow	KA 3108
red	KA 3109
white	KA 3110



Supporting bracket for AP/APE 1.  
Order number AZ 0001

APE 2 F  
AZ 0005

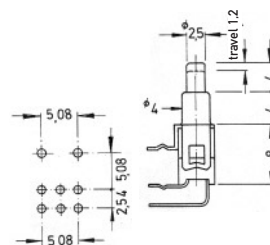


### Special pin configuration:

Subminiature pushbutton switch  
with 5,08 mm spacing

Additional to type number: – 1

Example of order: APE 2 F – RA – 1





# Subminiature Pushbutton Switches

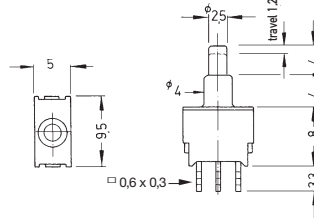
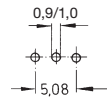
**Models:** Switching functions: when looking at the brand name,  
the normally closed contact is on the right-hand side

washable

SPDT

APE 1 F

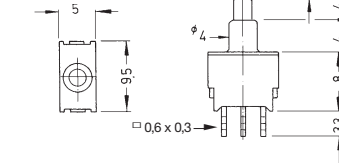
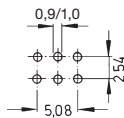
on - mom



DPDT

APE 2 F

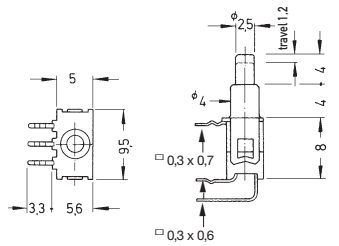
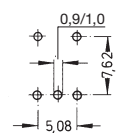
on - mom



SPDT

APE 1 F - RA

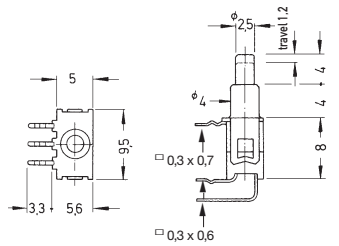
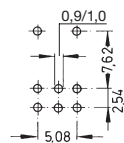
on - mom



DPDT

APE 2 F - RA

on - mom



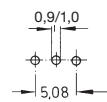
SPDT

AP 1 C

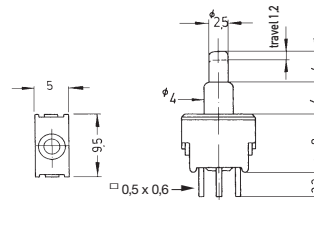
off - mom

AP 1 F

on - mom



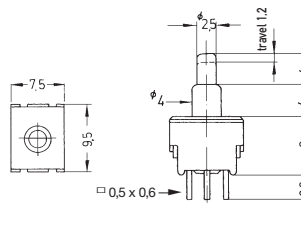
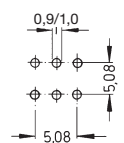
AP 1 C  
no center terminal



DPDT

AP 2 R

on - mom



Subminiature pushbutton switches with short necktube

Additional to type number: K

Example of order: AP 1 FK

