

# HID-HeavyDuty BSN semi-parallel for SON/ CDO/MH/HPI

BSN 150 L34 240V 50Hz HD2-134

Encapsulated electromagnetic copper/iron ballasts for use with an external semi-parallel ignitor for CDM, CDO, MH, HPI (Plus) and SON lamps (no ignitor needed for SON-I lamps)

## Product data

### • General Characteristics

Rated Number of Lamps	1 piece
Rated Ballast-Lamp Power	150
Rated Lamptype	SON/MH/CDM/CDO
Application code	L34
Line Voltage	240 V
Line Frequency	50 Hz
Design	HD2-134

### • Operating Characteristics

Input current with PF-correct.	0.85 A
Input current w/o PF-correct.	1.80 A
Mains voltage safety (AC)	-10%/+10%
Mains voltage performance (AC)	-8%/+6%
PowerFactor 100% output power	0.87 -
PowerFactor w/o PF compens.	0.40 -
Power losses gear	20.0 W

### • Wiring Characteristics

Connector type	Screw
Striplength	7.0 mm
Wcs Ballast contacts	0.70-6.00 mm <sup>2</sup>

### • Temperature Characteristics

Active temperature protection	No
-------------------------------	----

T-storage	-30 (min), 130 (max) C
T-winding maximum (tw)	130 (max) C
Delta-T normal conditions	70 C

### • Approval & Application Chars

CE marking	Yes
ENEC certificate	Yes

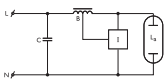
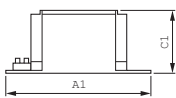
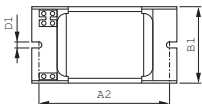
### • Product Dimensions

Length A1	134.0 mm
Fixing Hole Distance	115.5 mm
Length A2	
Width B1	81.0 mm
Height C1	66.0 mm
Fixing Hole Diameter D1	6.2 mm

### • Product Data

Order code	913652060526
Full product code	913652060526
Full product name	BSN 150 L34 240V 50Hz HD2-134
Order product name	BSN 150 L34 240V 50Hz HD2-134
Pieces per pack	1
Packing configuration	6
Packs per outerbox	6
Bar code on pack - EAN1	8711500915207
Bar code on outerbox - EAN3	8711500932686
Logistic code(s) - 12NC	913652060526
Net weight per piece	2.100 kg

## Dimensional drawing



Product	A1 (Norm)	A2 (Norm)	B1 (Norm)	C1 (Norm)	D1 (Norm)
BSN 150 L34 240V 50Hz HD2-134	134.0	115.5	81.0	66.0	6.2



© 2011 Koninklijke Philips Electronics N.V.  
All rights reserved.

Specifications are subject to change without notice. Trademarks are the property of Koninklijke Philips Electronics N.V. or their respective owners.

[www.philips.com/lighting](http://www.philips.com/lighting)

2011, June 7  
data subject to change