

Miniature Push Button Switches



DESCRIPTION

A range of miniature low cost push-to-make switches with an all-plastic body and chrome locking nut, offered in a variety of button colours.

DISTINCTIVE FEATURES

- Non-locking action
- Panel cut-out 7mm
- Solder terminals
- Miniature Size
- Round actuator
- Supplied with chrome plated locking nut

APPLICATIONS

Suitable for a wide range of applications including prototyping & product design, education projects & hobbyist use.

PB
(Mom)

SPST

NO
(NC)





ELECTRICAL SPECIFICATION

| | |
|-------------------------|--------------------------------------|
| Maximum contact voltage | 60V AC |
| Maximum current | 250 mA |
| Contact resistance | 20 mΩ max |
| Insulation resistance | 100 MΩ min (Test conditions 500V DC) |
| Dielectric strength | AC 1000V 1 minute |



GENERAL SPECIFICATION

| | |
|-----------------------|-----------------------------------|
| Type | Push-button panel mounting switch |
| Action | Momentary |
| Contact configuration | SPST |
| Contacts | NO (NC) |
| RoHS compliant | Yes |



MATERIALS

| | |
|----------|-----------------------|
| Body | ABS |
| Pin | Brass |
| Washer | Brass |
| Nut | Steel – chrome plated |
| Actuator | ABS |



ENVIRONMENTAL/OPERATING SPECIFICATION

| | |
|----------------------------|---|
| Operational temperature | -40°C to + 65°C |
| Electrical life | 20,000 make & break cycles at full load |
| Mechanical life | 50,000 make & break cycles |
| Operating force | 550 gf +/- 100 |
| ABS temperature resistance | up to 175 +/- 5°C |
| Hand soldering | Use 60 watt soldering iron for ≤3 seconds |



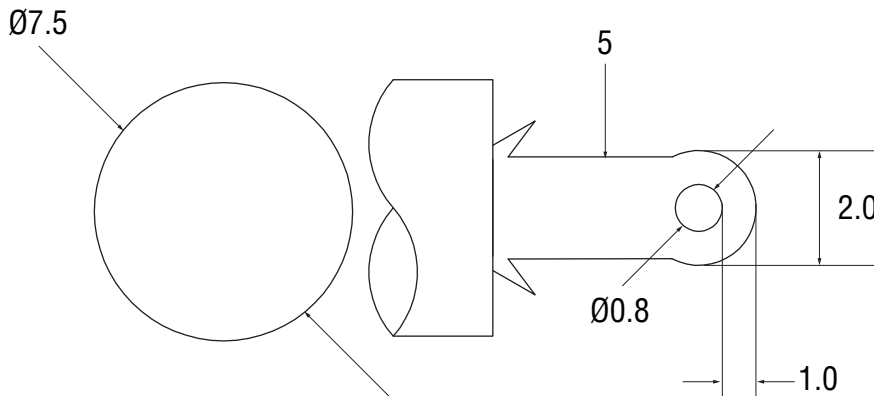
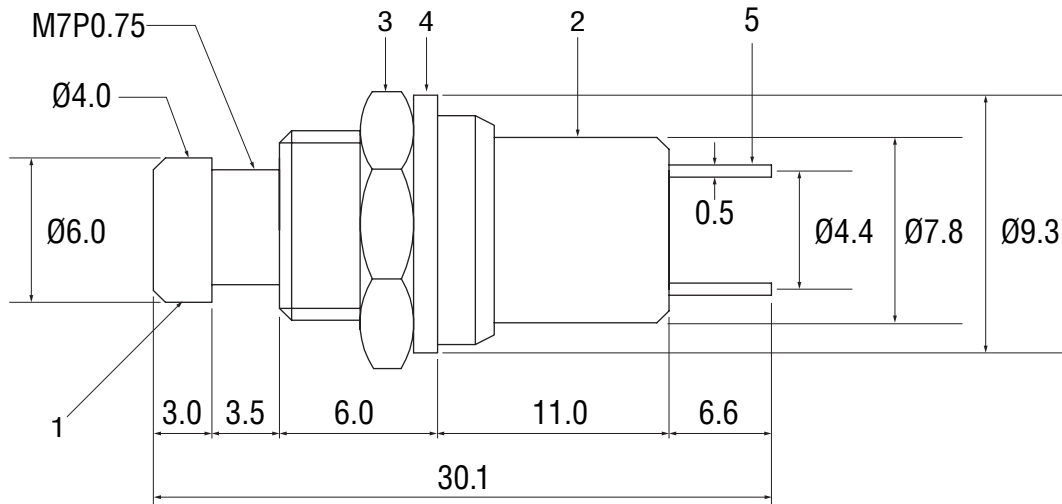
TERMINALS

| | |
|----------------|-------------|
| Terminal type | Solder tags |
| Terminal size | 2.0 x 0.5mm |
| Terminal pitch | 4.4mm |



DIMENSIONS/DRAWINGS

| | |
|-------------------------|------------------------------|
| Units | mm - unless stated otherwise |
| Dimensions | 9.3Ø x 23.5 |
| Panel cut out diameter | 7 |
| Maximum panel thickness | 2.5 |
| Weight (grams) | 2.2 |



- 1: Actuator
- 2: Body
- 3: Nut
- 4: Washer
- 5: Pin

Panel Thickness: 2.5mm Max



OPTIONS (MOQ may apply)

Actuator

Blue & green versions available



PART NUMBER TABLE

| Part Number | Actuator Colour | UNSPSC | EAN | Country Of Origin |
|-------------|-----------------|----------|---------------|-------------------|
| 78-0381 | Red | 39122216 | 5053556003112 | China |
| 78-0382 | Black | 39122216 | 5053556003129 | China |
| 78-0383 | Yellow | 39122216 | 5053556003136 | China |
| 78-0384 | White | 39122216 | 5053556003143 | China |



Tried & trusted technology

Important Notice: This data sheet and its contents (the "Information") belong to Rapid Electronics Limited or are licensed to it. No licence is granted for the use of it other than for information purposes in connection with the products to which it relates. No licence of any intellectual property rights is granted. The Information is subject to change without notice and replaces all data sheets previously supplied. The Information supplied is believed to be accurate but Rapid Electronics Limited assumes no responsibility for its accuracy or completeness, any error in or omission from it or for any use made of it. Users of this data sheet should check for themselves the Information and the suitability of the products for their purpose and not make any assumptions based on information included or omitted. Liability for loss or damage resulting from any reliance on the Information or use of it (including liability resulting from negligence or where Rapid Electronics Limited were aware of the possibility of such loss or damage arising) is excluded. This will not operate to limit or restrict Rapid Electronics Limited's liability for death or personal injury resulting from its negligence.