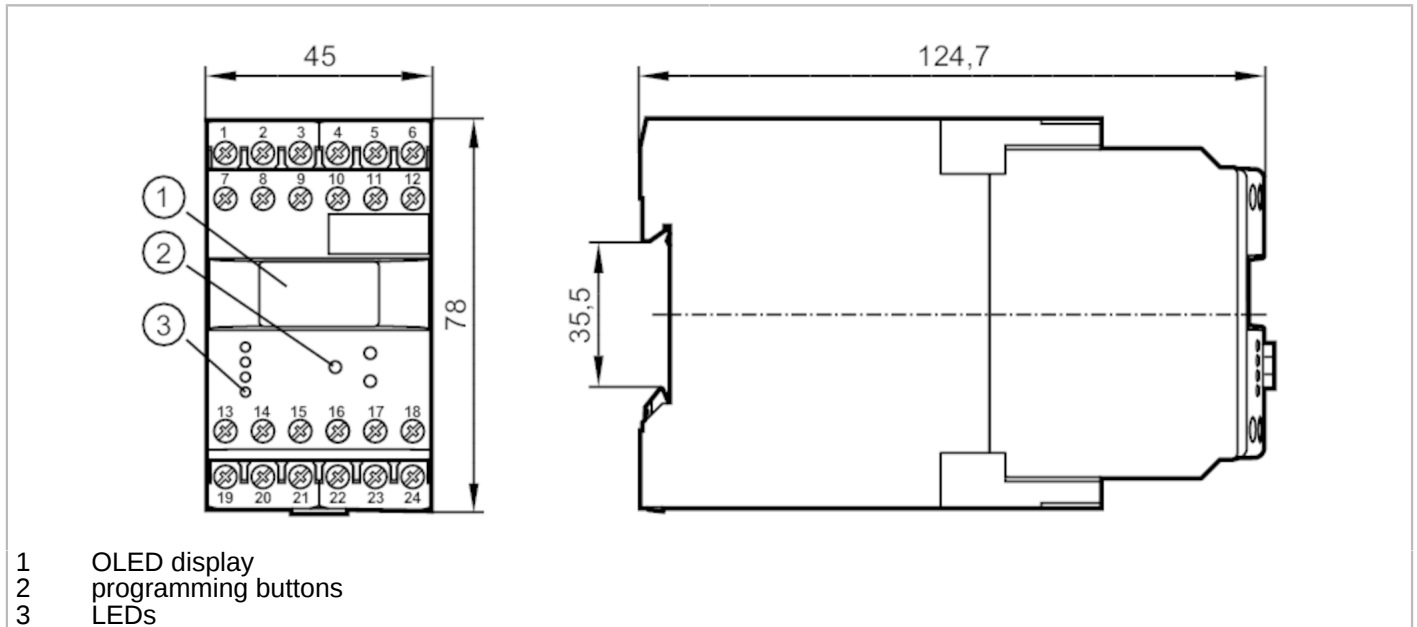


# DS2506



## Evaluation unit for slip and synchronous monitoring

MONITOR/FS-3 /110-240VAC/DC



- 1 OLED display
- 2 programming buttons
- 3 LEDs



Product characteristics	
Dimensions	[mm] 78 x 45 x 124.7
Application	
Application	pulse evaluation system with microprocessor for synchronous monitoring; evaluation of pulse differences
Electrical data	
Nominal voltage AC	[V] 110...240
Nominal voltage DC	[V] 27
Nominal voltage tolerance	[%] < 10
Nominal voltage tolerance 2	[%] 20...10
Nominal frequency AC	[Hz] 50...60
Power consumption	[W] 3
Auxiliary energy for sensors DC	[V] 19.6...27.7; (SELV, ≤ 150 mA)
Inputs / outputs	
Number of inputs and outputs	Number of relay outputs: 2
Outputs	
Number of relay outputs	2
Contact rating	6 A (250 V AC); B300, R300
Measuring/setting range	
Setting range Hz	[Hz] 0.1...1000
Setting range	[Imp/min] 1...60000

# DS2506



## Evaluation unit for slip and synchronous monitoring

MONITOR/FS-3 /110-240VAC/DC

Operating conditions		
Ambient temperature [°C]	-40...60	
Storage temperature [°C]	-40...85	
Max. relative air humidity [%]	80; (40 °C: 50 %)	
Protection	IP 50	
Protection rating terminals	IP 20	
Tests / approvals		
EMC	EN 61010	2011
	EMV 89/336/EWG	
	EN 61000-6-2	2005
	EN 61000-6-4	2007
Mechanical data		
Weight [g]	382	
Dimensions [mm]	78 x 45 x 124.7	
Materials	plastics	
Displays / operating elements		
Display		OLED display, 128 x 64 pixels luminous
	switching status	LED, green
Remarks		
Remarks	The unit complies with overvoltage category II; degree of soiling 2	



## Evaluation unit for slip and synchronous monitoring

MONITOR/FS-3 /110-240VAC/DC

### Electrical connection

dual-chamber terminals: 2 x ...2.5 mm<sup>2</sup>; AWG 14

1	DC supply voltage (L-)
2	DC supply voltage (L+)
3	supply transistor outputs (L+)
4	sensor signal 1 pnp
5	DC Sensor supply (L+)
6	DC Sensor supply (L-)
7	AC supply voltage (L)
8	AC supply voltage (N)
9	not used
10	sensor signal 1 npn
11	sensor signal 2 pnp
12	sensor signal 2 npn
13	relay 1 common
14	relay 1 normally open
15	relay 1 normally closed
16	transistor output 1 pnp
17	release 1/2 pnp
18	reset 1/2 pnp
19	relay 2 common
20	relay 2 normally open
21	relay 2 normally closed
22	not used
23	not used
24	transistor output 2 pnp