



Figure similar

COUPLING RELAY IM INDUSTRY-STANDARD  
ENCLOSURE 2 CHANGEOVER CONTACTS  
COMBIVOLTAGE 24 V AND 110 V TO 120 V AC/DC  
CAGE CLAMP CONNECTIONS

General technical data:

Type of voltage		AC/DC
<b>Supply voltage frequency</b>		
<ul style="list-style-type: none"> <li>• 1 for auxiliary and control current circuit                             <ul style="list-style-type: none"> <li>— Rated value</li> </ul> </li> </ul>	Hz	50
<ul style="list-style-type: none"> <li>• 2 for auxiliary and control current circuit Rated value</li> </ul>	Hz	60
<b>Control supply voltage 1</b>		
<ul style="list-style-type: none"> <li>• with AC                             <ul style="list-style-type: none"> <li>— at 50 Hz Rated value</li> <li>— at 50 Hz Initial rated value</li> <li>— at 50 Hz Final rated value</li> <li>— at 60 Hz Rated value</li> <li>— at 60 Hz Initial rated value</li> <li>— at 60 Hz Final rated value</li> </ul> </li> <li>• for DC                             <ul style="list-style-type: none"> <li>— Rated value</li> </ul> </li> </ul>	V	24 110 120 24 110 120 24
<b>Switching behavior</b>		monostable
<b>Product component Plug-in socket</b>		No
<b>Equipment marking acc. to DIN EN 61346-2</b>		K
<b>Equipment marking acc. to DIN 40719 extended according to IEC 204-2 acc. to IEC 750</b>		K

Mechanical data:

<b>Type of electrical connection</b>		spring-loaded terminals
<b>Type of electrical connection Plug-in socket</b>		No

Design of the relay operating mechanism		poled
Design of the switching function positively driven		No
Width	mm	22.5
Height	mm	94
Depth	mm	91




#### Auxiliary circuit:

Number of NC contacts for auxiliary contacts		0
Number of NO contacts for auxiliary contacts		0
Number of CO contacts for auxiliary contacts		2
Ampacity of the output relay		
<ul style="list-style-type: none"> <li>• at DC-13 <ul style="list-style-type: none"> <li>— at 24 V</li> <li>— at 125 V</li> <li>— at 250 V</li> </ul> </li> <li>• at AC-15 at 250 V at 50/60 Hz</li> </ul>	A A A A	1 0.2 0.1 3

#### Ambient conditions:

Protection class IP		IP20
Ambient temperature during operation minimum	°C	-25
Ambient temperature during operation maximum	°C	60

#### Certificates/ approvals:

General Product Approval	Test Certificates	other
 CCC	<a href="#">Special Test Certificate</a>	<a href="#">Environmental Confirmations</a>
		<a href="#">other</a>
 UL		

#### other

[Declaration of Conformity](#)

#### Further information

##### Information- and Downloadcenter (Catalogs, Brochures,...)

<http://www.siemens.com/industrial-controls/catalogs>

##### Industry Mall (Online ordering system)

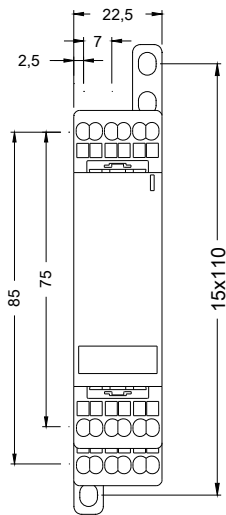
<http://www.siemens.com/industrymall>

##### Cax online generator

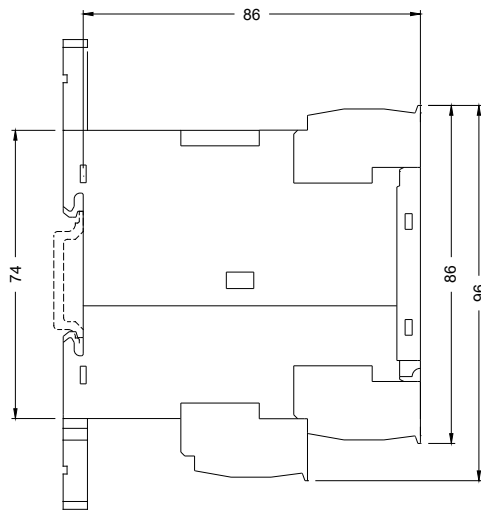
<http://support.automation.siemens.com/WW/CAXorder/default.aspx?lang=en&mlfb=3RS18002BQ00>

##### Service&Support (Manuals, Certificates, Characteristics, FAQs,...)

<http://support.automation.siemens.com/WW/view/en/3RS18002BQ00/all>



last modified:



09.03.2015