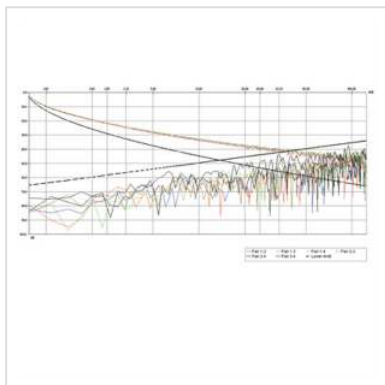


# ROLINE S/FTP Cable Cat.5e, Stranded Wire, 300 m

<b>Product No.</b>	21.15.0321
<b>Manufacturer</b>	ROLINE
<b>Manufacturer No.</b>	21.15.0321
<b>EAN (single piece)</b>	7611990135912



**Cat.5e**

- Structured building wiring
- Impedance: 100 Ohm
- Colour: Grey
- Construction 21.15.0321: 8 lines, copper, stranded wire AWG26, screening: alu-laminated foil, shielding: copper braid
- Diagram: attenuation/near end crosstalk

For a structured cabling system we recommend to use the following components:

ROLINE Cat.5e S/FTP Cable, Solid Wire, AWG24: 21.15.0019 (100 m), 21.15.0020 (300 m)

ROLINE Cat.5e Flush/Surface Mount Wall Jack, shielded: 25.16.8487 (white), 25.16.8486 (ivory)/25.16.8387 (white), 25.16.8386 (ivory)

ROLINE Cat.5e 19" Patch Panel, 24 Ports, shielded: 26.11.0329 (light grey), 26.11.0328 (black)

ROLINE Cat.5e S/FTP Patch Cord, grey, 5 m: 21.15.0305

Our in-house laboratory has tested this cable-plug combination, in a Channel of 100 meters, in compliance with Class D specifications.

## Technical specifications

Manufacturer	ROLINE
Product group	Twisted Pair Cable
Product type	installation cable
Colour	grey
Length	300 m
Shield type	SFTP
Transfer quality	Cat5e / Class D
Impedance	100 Ohm
Quantity of wires	8
Conductor cross section (AWG)	AWG 26
Conductor type	Wire
Cable LSOH	No
Material (external cable mantle)	PVC