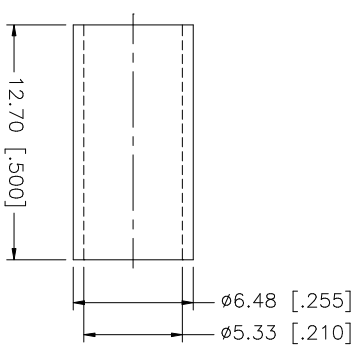
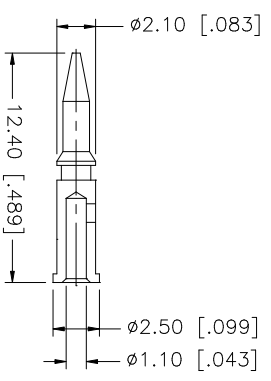
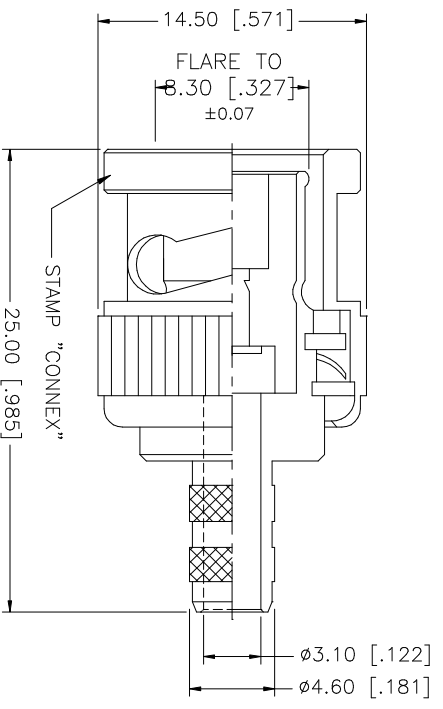
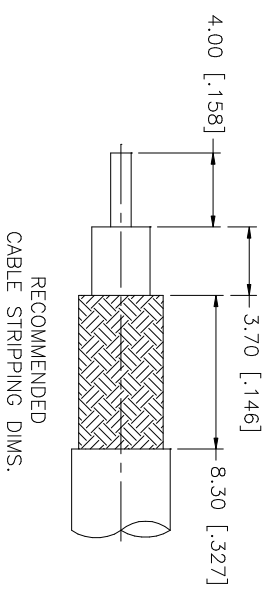


REV.	DATE	DESCRIPTION
A	04/04/03	UPDATE DRAWING FORMAT



8						UNLESS OTHERWISE SPECIFIED DIMENSIONS ARE IN MILLIMETERS. DIMENSIONS IN [ ] ARE IN INCHES AND FOR CUSTOMER REFERENCE ONLY. UNLESS OTHERWISE SPECIFIED TOLERANCES FOR MILLIMETERS ARE: 0.5 - 8mm ± 0.20mm 8 - 30mm ± 0.40mm 30 - 120mm ± 0.50mm UNLESS OTHERWISE SPECIFIED TOLERANCES FOR INCHES ARE: .020 - .315 = ± 0.007" .315 - 1.180 = ± 0.015" 1.180 - 4.724 = ± 0.020" DO NOT SCALE DRAWING
7						
6						
5						
4	FERRULE	COPPER	NICKEL	1		
3	CONTACT PIN	BRASS	GOLD	1		
2	INSULATOR	DELRIN	NATURAL	1		
1	SHELL/BODY	BRASS	NICKEL	1		
	DESCRIPTION	MATERIAL	FINISH	QTY		

APPROVALS	DATE	
DRAWN G.R.S.	04/04/03	
CHECKED		
ISSUED		
SHEET 1 OF 1		
CAD FILE C:/112/112116.DWG		
DWG. NO. 112116.DWG		
REV. A		
SIZE A		
SCALE NA		
PART DESCRIPTION <b>BNC CRIMP PLUG</b> (FOR RG-58C/U CABLE) 112116		