

## Docking frame for 2 modules, fixed moun

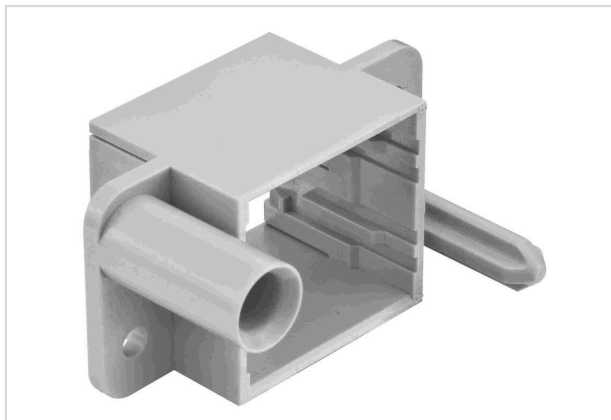


Image is for illustration purposes only. Please refer to product description.

|                    |                                                                                       |
|--------------------|---------------------------------------------------------------------------------------|
| Part number        | 09 14 006 1711                                                                        |
| Specification      | Docking frame for 2 modules, fixed moun                                               |
| HARTING eCatalogue | <a href="https://b2b.harting.com/09140061711">https://b2b.harting.com/09140061711</a> |

### Identification

|                              |                                   |
|------------------------------|-----------------------------------|
| Category                     | Accessories                       |
| Series                       | Han-Modular®                      |
| Type of accessory            | Docking frame                     |
| Description of the accessory | Fixed<br>for 2 modules<br>a ... b |

### Technical characteristics

|                                         |                 |
|-----------------------------------------|-----------------|
| Limiting temperature                    | -40 ... +125 °C |
| Mating cycles                           | ≥500            |
| Mating cycles with other HMC components | ≥10,000         |
| Degree of protection acc. to IEC 60529  | IP20            |
| Lock-in range                           | ±4 mm           |

### Material properties

|                                           |                      |
|-------------------------------------------|----------------------|
| Material                                  | Polycarbonate (PC)   |
| Material flammability class acc. to UL 94 | V-0                  |
| RoHS                                      | compliant            |
| ELV status                                | compliant            |
| China RoHS                                | e                    |
| REACH Annex XVII substances               | Not contained        |
| REACH ANNEX XIV substances                | Not contained        |
| REACH SVHC substances                     | Not contained        |
| Fire protection on railway vehicles       | EN 45545-2 (2020-08) |



**Pushing Performance**  
Since 1945

## Material properties

|                                    |                              |
|------------------------------------|------------------------------|
| Requirement set with Hazard Levels | R22 (HL 1-3)<br>R23 (HL 1-3) |
|------------------------------------|------------------------------|

## Specifications and approvals

|                |                          |
|----------------|--------------------------|
| Specifications | IEC 60664-1<br>IEC 61984 |
|----------------|--------------------------|

## Commercial data

|                                |                                                         |
|--------------------------------|---------------------------------------------------------|
| Packaging size                 | 2                                                       |
| Net weight                     | 16 g                                                    |
| Country of origin              | Germany                                                 |
| European customs tariff number | 85389099                                                |
| GTIN                           | 5713140020443                                           |
| eCl@ss                         | 27440206 Module carrier frame for industrial connectors |