

• • • ept  
*connectors*



## **One27 Connectors**

1.27 mm SMT for Board-to-Board Applications

# One27 – 1.27 mm SMT for Board-to-Board Applications

## Versatile, Robust, Compact

ept's new series of One27 provides connectors that are highly flexible in design options for board-to-board applications, offering highest reliability of interconnections. The product family is based upon a pitch of 1.27 mm.

There are available many different connector types including straight and angled versions, as well as flat cable connections. The pin count ranges from 12 to 80. The One27 female IDC is available separately or pre-assembled with a cable. ept's One27 connectors are fully compatible with already available products in the market.

The design of ept's One27 connectors was focused upon a highest demand for functionality, robustness, and ease of use.

## Key Features:

- 12 to 80 pins
- 1.4 A operational current
- 500 mating cycles
- reliable contact
- tested compatibility with other suppliers
- female IDC separately or pre-assembled with a cable available
- packed in Tape & Reel

## Applications:

- board-to-board (mezzanine) from 8 mm up to 13.8 mm
- parallel and perpendicular connection
- IDC-connection with ribbon cable

## Termination

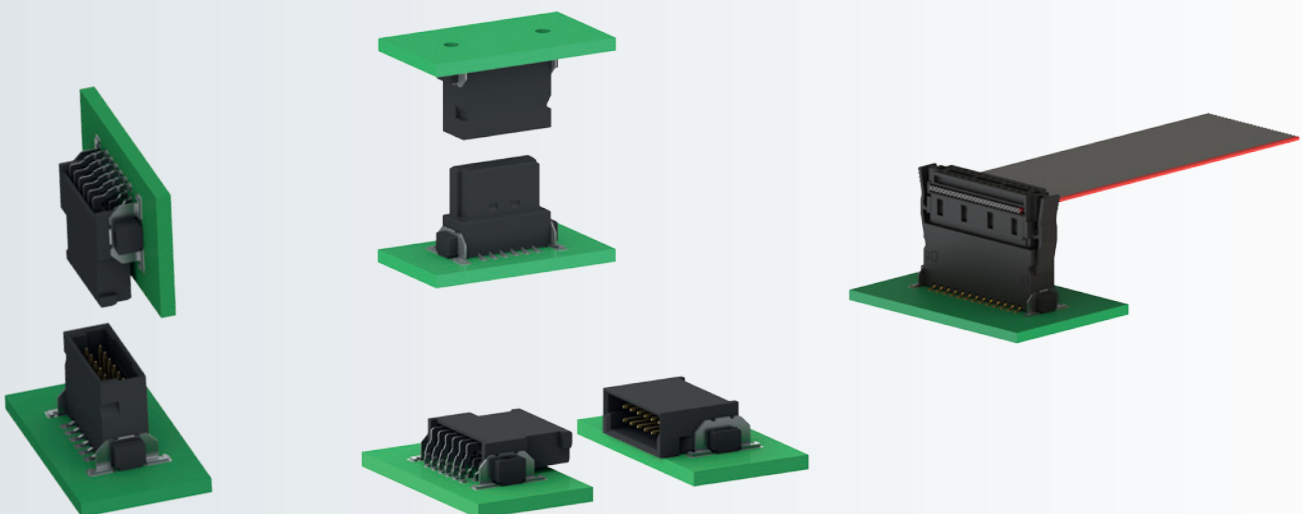


SMT

## Application



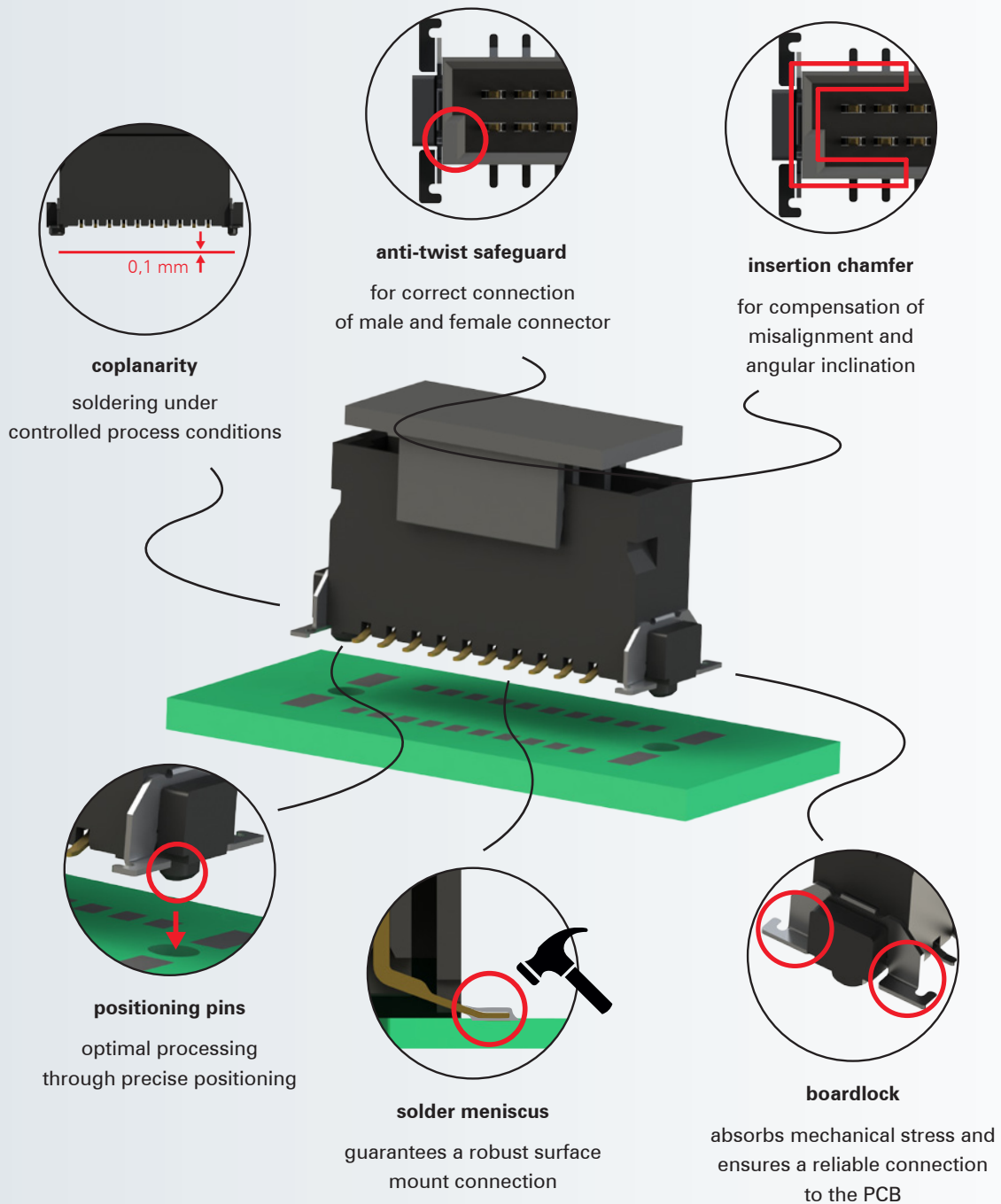
High Density

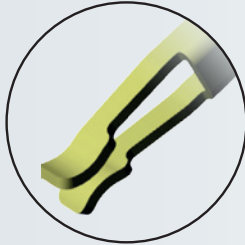


# One27 – Product Overview

Type of One27 connector	Height	Number of pins	Mating configuration				Page
			 Parallel	 Horizontal	 Perpendicular	 Cable	
	1.75 mm	12 ... 80	✓		✓	✓	8
	3.25 mm	12 ... 80	✓		✓	✓	10
		12 ... 80		✓	✓	✓	12
	6.25 mm	12 ... 80	✓		✓		14
	9.05 mm	12 ... 80	✓		✓		16
		12 ... 80		✓	✓		18
		12 ... 80				✓	20
		12 ... 80				✓	22

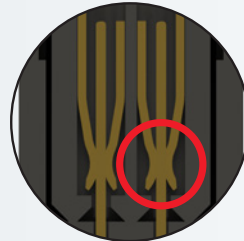
## Advantages of One27





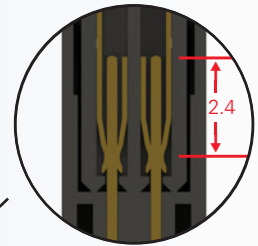
**smooth surface**

secure contact mating  
on the rolled, homogeneous  
surface



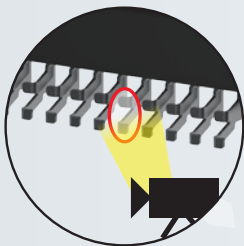
**spring contacts**

for secure and reliable  
contact mating



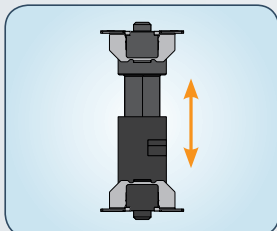
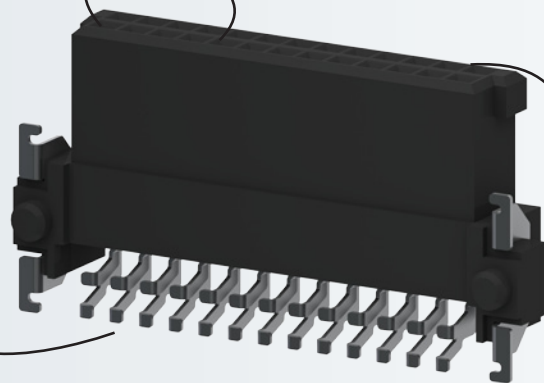
**wipe length**

reliability through high  
tolerance compensation



**AOI-control**

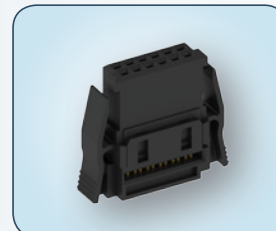
optimized contact design for  
automated testing after soldering



Test reports prove the  
compatibility with other  
connectors available on the  
market

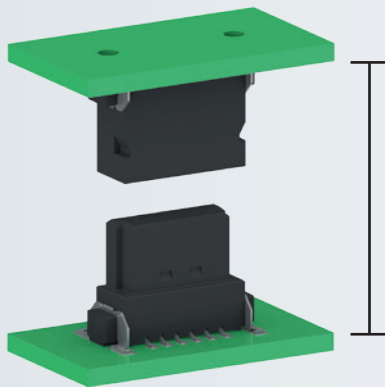


Tape & Reel packaging for  
automatic assembly



IDC connector available without  
ribbon cable for individual cable  
lengths

## PCB Distances Board-to-Board

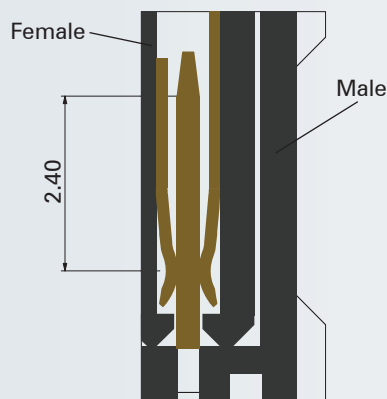


8.00 - 13.8 mm

Board-to-board distances of 8.00 mm up to 13.8 mm can be achieved using One27 connectors.

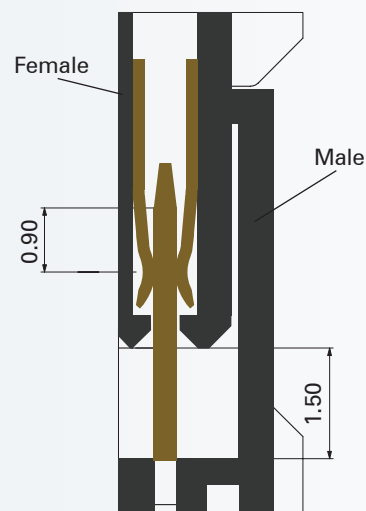
PCB distance min. - max.	Male connector height	Female connector height
8.00 - 9.50 mm	low-profile 1.75 mm <i>(see p. 8)</i>	low-profile 6.25 mm <i>(see p. 14)</i>
9.50 - 11.00 mm	mid-profile 3.25 mm <i>(see p. 10)</i>	low-profile 6.25 mm <i>(see p. 14)</i>
10.80 - 12.30 mm	low-profile 1.75 mm <i>(see p. 8)</i>	mid-profile 9.05 mm <i>(see p. 16)</i>
12.30 - 13.80 mm	mid-profile 3.25 mm <i>(see p. 10)</i>	mid-profile 9.05 mm <i>(see p. 16)</i>

**Connection for  
min. PCB distance**



The minimum possible board-to-board distance is achieved by plugging the connector all the way in to the stop position.

**Connection for  
max. PCB distance**

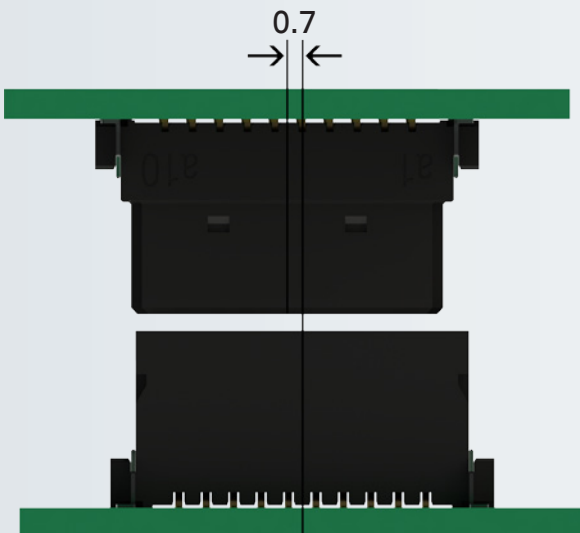


The male and female can be inserted anywhere within a range of 1.5 mm, thus allowing for the maximum possible board-to-board distance. The remaining 0.9 mm ensures secure contact mating.

## Misalignment One27 Connectors

### Allowed misalignment tolerances

longitudinal:  $\pm 0.7$  mm



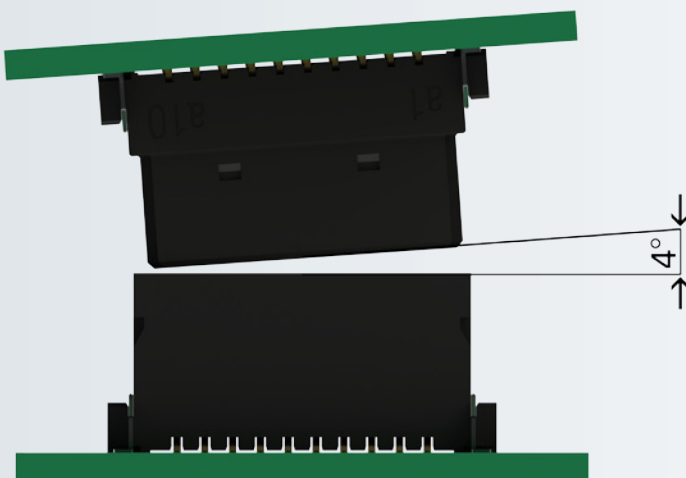
transverse:  $\pm 0.7$  mm



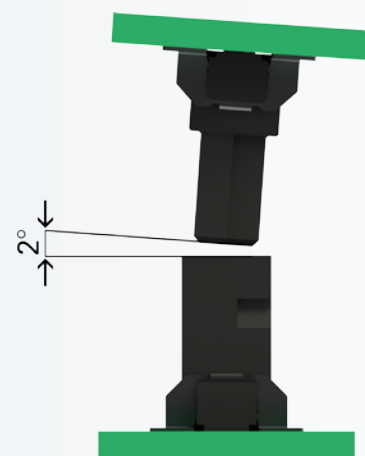
## Angular Inclination One27 Connectors

### Allowed angular inclination tolerances

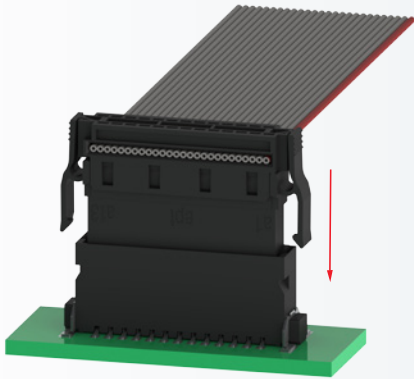
longitudinal:  $\pm 4^\circ$



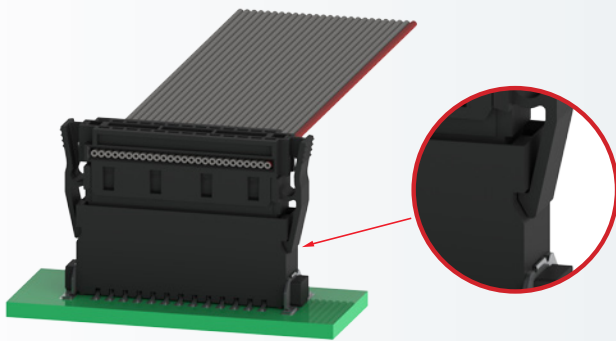
transverse:  $\pm 2^\circ$



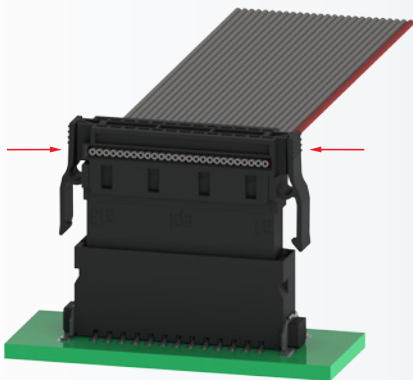
## Locking of One27 IDC-Female Connector



While inserting the IDC-female connector into the male connector the snap-fits are locking automatically into the slots.



If the snap-fits are visibly locked into the slots, the connection between female and male connector is secured.



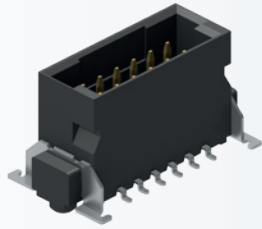
For disconnection: simply press the snap-fits together.



## Technical Specification

Technical specification	One27	
	Test Standard	1.27 mm SMT Board-to-Board Connectors; IDC Cable Assembly
<b>Basics</b>		
Number of pins		12 / 16 / 20 / 26 / 32 / 40 / 50 / 68 / 80
Termination		SMT
Operating temperature range		-55°C to +125°C (Board-to-Board Connectors)
<b>Material</b>		
Insulator material		LCP, UL 94 V-0
CTI value	IEC 60112	175
Contact material		Copper alloy
Contact surface		Au over PdNi over Ni / Au over NiP over Ni
Termination area		Sn
<b>Mechanical</b>		
Pitch		1.27 mm
Mating force per pin		0.5 N
Seperating force per pin		0.5 N
Durability	IEC 60512-9-1:2010	Performance level I: 500 mating cycles
Coplanarity		max. 0.1 mm
Vibration, sinusoidal	IEC 60512-6-4:2002	10 - 200 Hz 20 g
Contact mating problems if vibrations occur, sinusoidal	IEC 60512-2-5:2003	< 1 µs
Shock, semi-sinusoidal	IEC 60512-6-3:2002	50 g 11 ms
Contact mating problems if shocks occur, semi-sinusoidal	IEC 60512-2-5:2003	< 1 µs
<b>Electrical</b>		
Operational current	IEC 60512-5-2:2002	max. 1.4 A at 20°C (50 pins)
Contact resistance	IEC 60512-2-1:2002	max. 25 mΩ max. 10 mΩ (Female IDC assembled with cable)
Clearance and creepage		min. 0.4 mm
Insulation resistance	IEC 60512-3-1:2002	max. 10 GΩ
Test voltage	IEC 60512-4-1:2003	500 VAC
<b>Processing</b>		
Soldering temperature	JEDEC J-STD-020E	max. SMT reflow soldering temperature 20 - 40 s at 260°C
MSL	JEDEC J-STD-020E	1
Packaging		Tape and Reel, Tray (IDC female connector)
Assembly		Pick and place
<b>Approval</b>		
UL file		E130314
Environment		RoHS compliant

## Male connector low-profile



**Type:** Male connector straight low-profile  
1.75 mm unmated

**Number of pins:** 12 to 80

**Pitch:** 1.27 mm

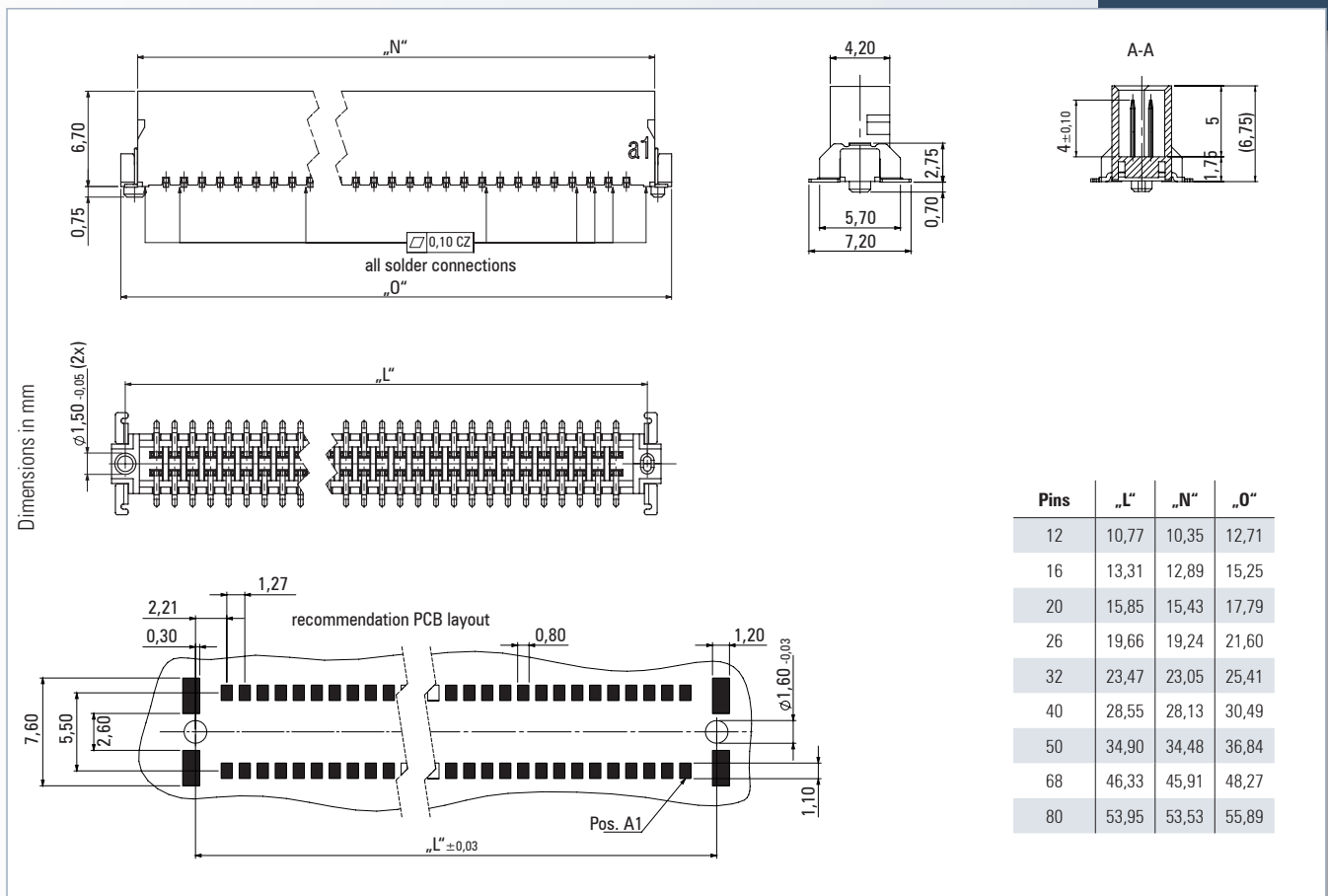
**Operational current:** 1.4 A at 20°C (50 pins)

**Packaging:** Tape and Reel




**Standards:**  

Technical Specification on page 7

For drawings and technical data visit [www.ept.de](http://www.ept.de)



### Mating connector / Application:

-  for parallel applications (p. 14-17)
-  for perpendicular applications (p. 18-19)
-  for applications with cable (p. 20-23)



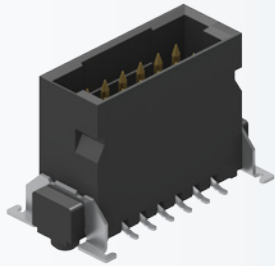
**Male connector low-profile - Performance level I** •••

Number of pins	Part number
12	403-52012-51
16	403-52016-51
20	403-52020-51
26	403-52026-51
32	403-52032-51
40	403-52040-51
50	403-52050-51
68	403-52068-51
80	403-52080-51

**On request**

- different number of pins
- other performance level

## Male connector mid-profile



**Type:** Male connector straight mid-profile  
3.25 mm unmated

**Number of pins:** 12 to 80

**Pitch:** 1.27 mm

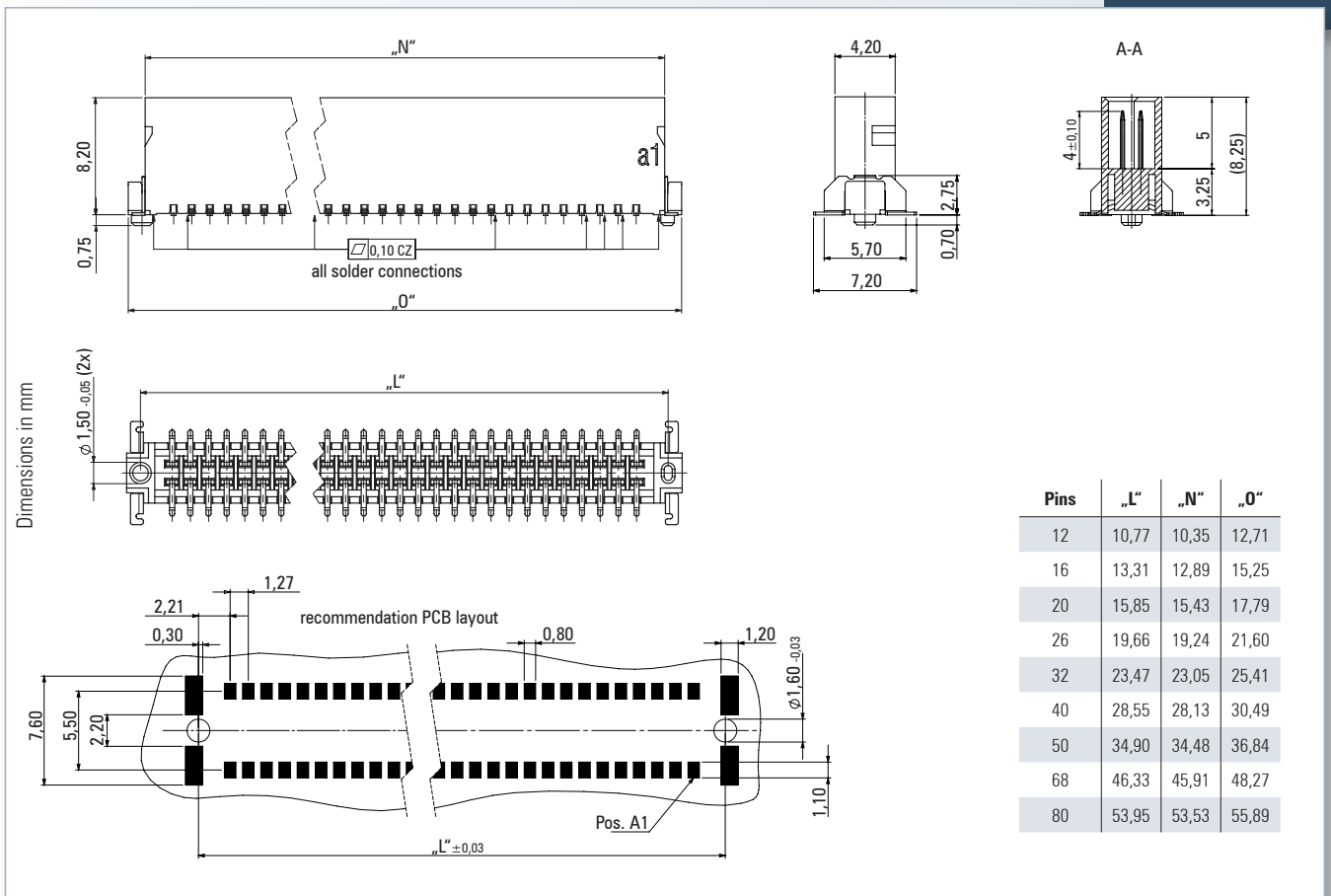
**Operational current:** 1.4 A at 20°C (50 pins)

**Packaging:** Tape and Reel

**Standards:**

Technical Specification on page 7

For drawings and technical data visit [www.ept.de](http://www.ept.de)



### Mating connector / Application:

- for parallel applications (p. 14-17)
- for perpendicular applications (p. 18-19)
- for applications with cable (p. 20-23)



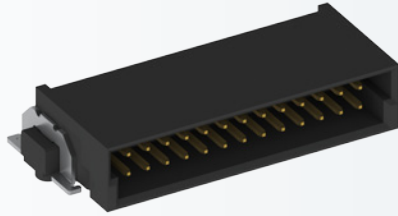
Male connector mid-profile - Performance level I

Number of pins	Part number
12	403-53012-51
16	403-53016-51
20	403-53020-51
26	403-53026-51
32	403-53032-51
40	403-53040-51
50	403-53050-51
68	403-53068-51
80	403-53080-51

On request

- different number of pins
- other performance level

## Male connector angled



**Type:** Male connector angled

**Number of pins:** 12 to 80

**Pitch:** 1.27 mm

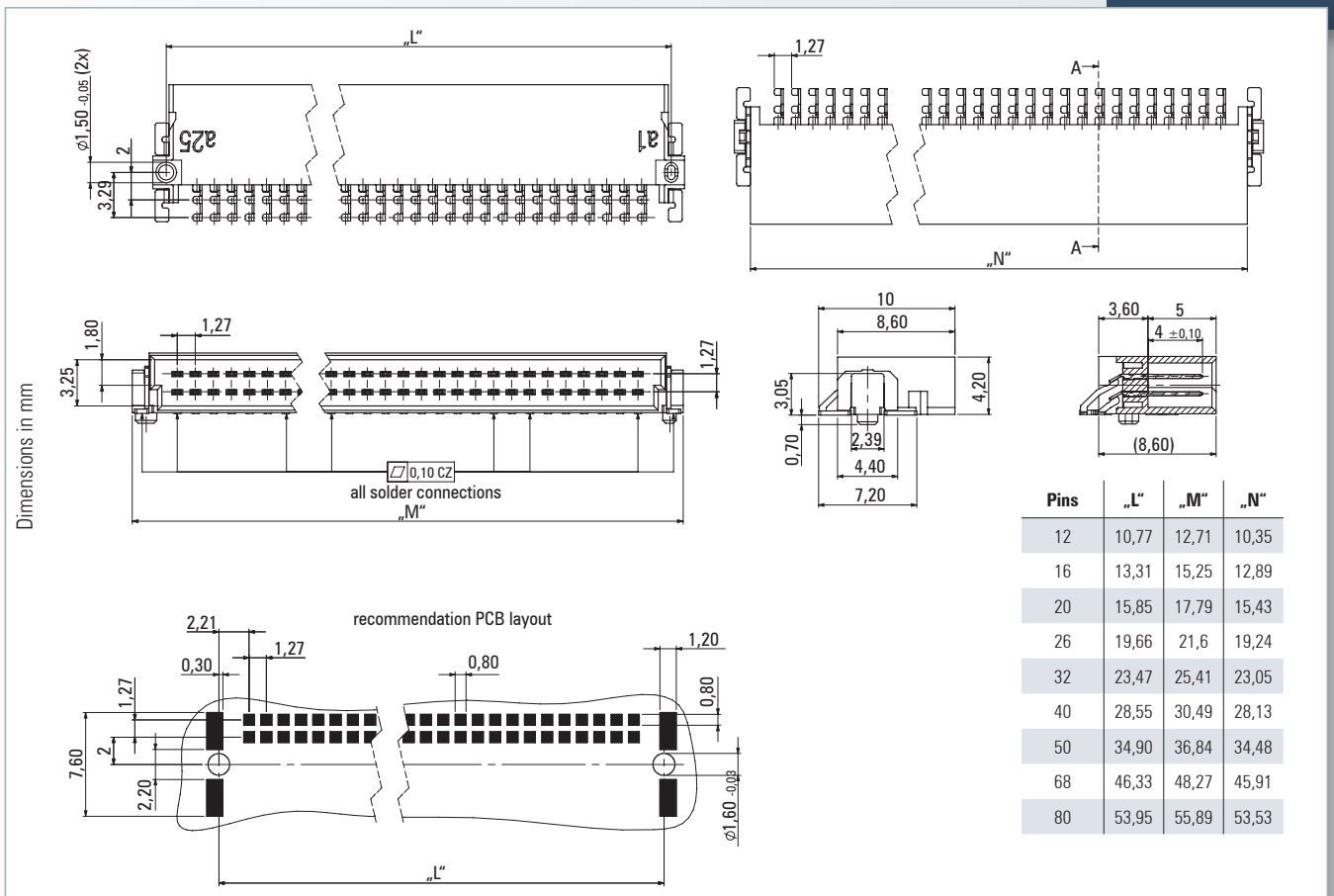
**Operational current:** 1.4 A at 20°C (50 pins)

**Packaging:** Tape and Reel

**Standards:** **US** **RoHS**  
COMPLIANT

Technical Specification on page 7

For drawings and technical data visit [www.ept.de](http://www.ept.de)



### Mating connector / Application:

- for horizontal applications (p. 18-19)
- for perpendicular applications (p. 14-17)
- for applications with cable (p. 20-23)



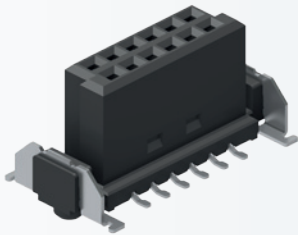
**Male connector angled - Performance level I** •••

Number of pins	Part number
12	403-51012-51
16	403-51016-51
20	403-51020-51
26	403-51026-51
32	403-51032-51
40	403-51040-51
50	403-51050-51
68	403-51068-51
80	403-51080-51

**On request**

- different number of pins
- other performance level

## Female connector low-profile



**Type:** Female connector straight low-profile  
6.25 mm unmated

**Number of pins:** 12 to 80

**Pitch:** 1.27 mm

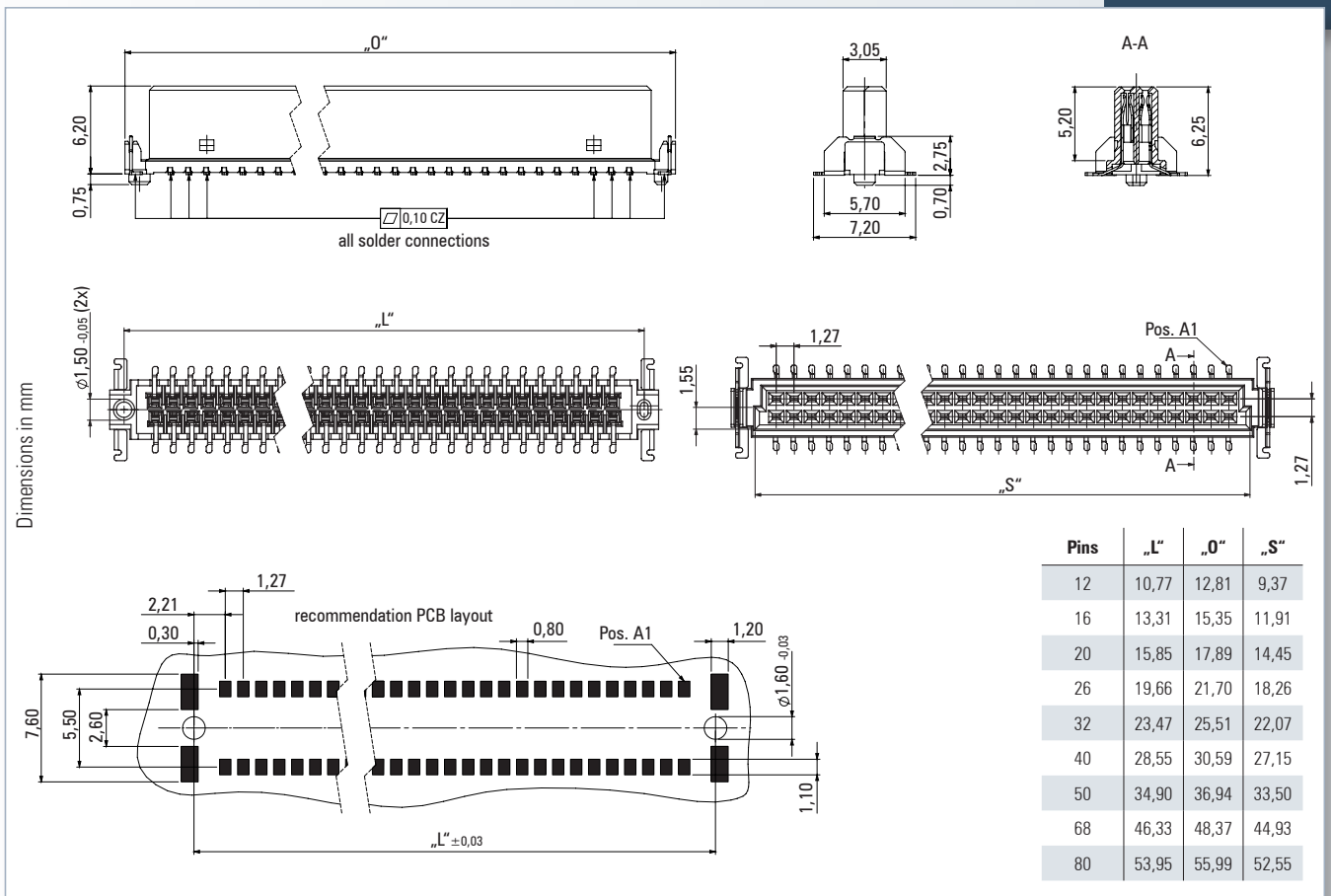
**Operational current:** 1.4 A at 20°C (50 pins)

**Packaging:** Tape and Reel

**Standards:**  

Technical Specification on page 7

For drawings and technical data visit [www.ept.de](http://www.ept.de)



### Mating connector / Application:



for parallel applications (p. 8-11)



for perpendicular applications (p. 12-13)





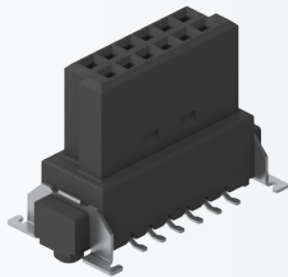
Female connector low-profile - Performance level I

Number of pins	Part number
12	404-52012-51
16	404-52016-51
20	404-52020-51
26	404-52026-51
32	404-52032-51
40	404-52040-51
50	404-52050-51
68	404-52068-51
80	404-52080-51

**On request**

- different number of pins
- other performance level

## Female connector mid-profile



**Type:** Female connector straight mid-profile  
9.05 mm unmated

**Number of pins:** 12 to 80

**Pitch:** 1.27 mm

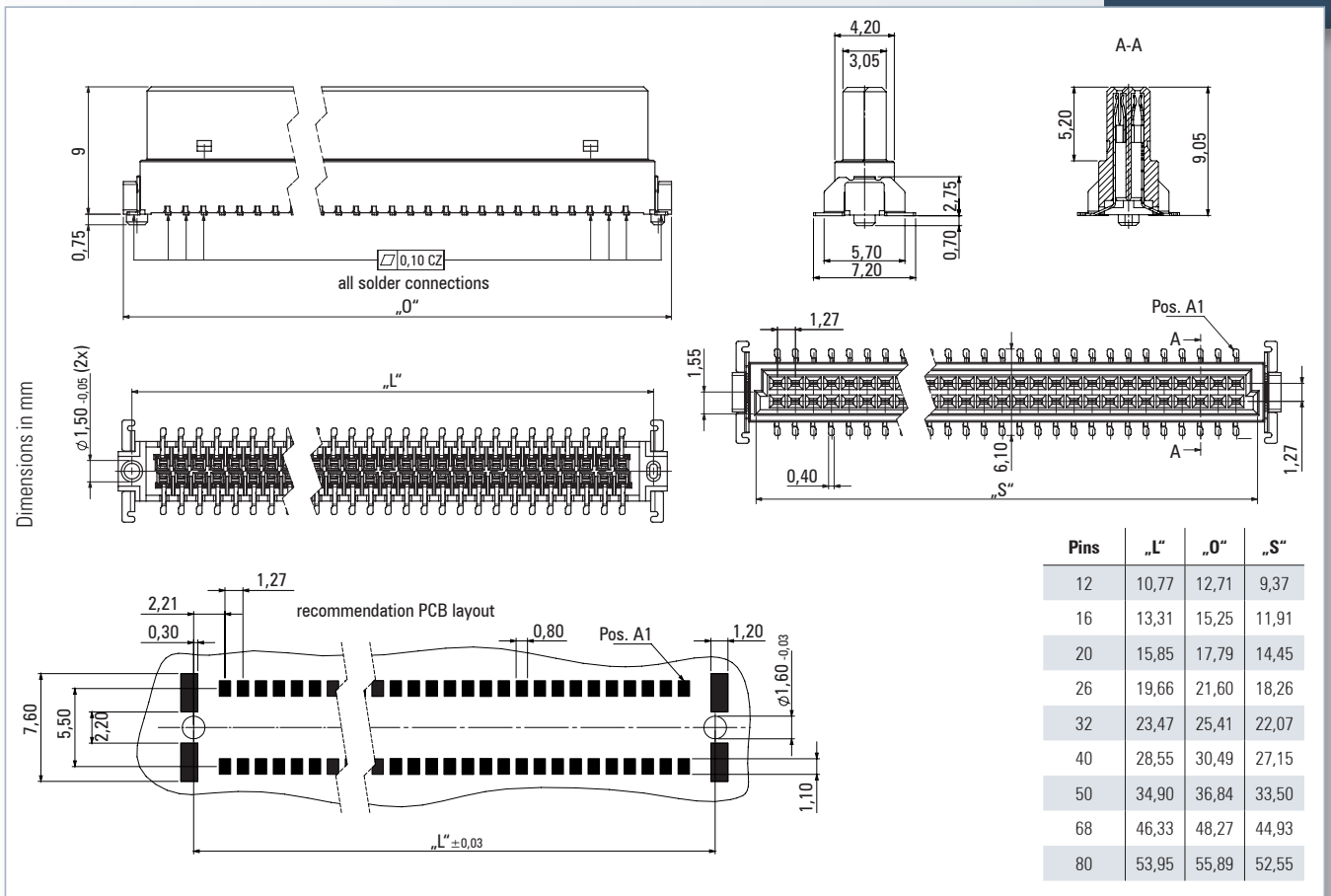
**Operational current:** 1.4 A at 20°C (50 pins)

**Packaging:** Tape and Reel

**Standards:**

Technical Specification on page 7

For drawings and technical data visit [www.ept.de](http://www.ept.de)



### Mating connector / Application:



for parallel applications (p. 8-11)



for perpendicular applications (p. 12-13)



Female connector mid-profile - Performance level I

Number of pins	Part number
12	404-53012-51
16	404-53016-51
20	404-53020-51
26	404-53026-51
32	404-53032-51
40	404-53040-51
50	404-53050-51
68	404-53068-51
80	404-53080-51

**On request**

- different number of pins
- other performance level

## Female connector angled



**Type:** Female connector angled

**Number of pins:** 12 to 80

**Pitch:** 1.27 mm

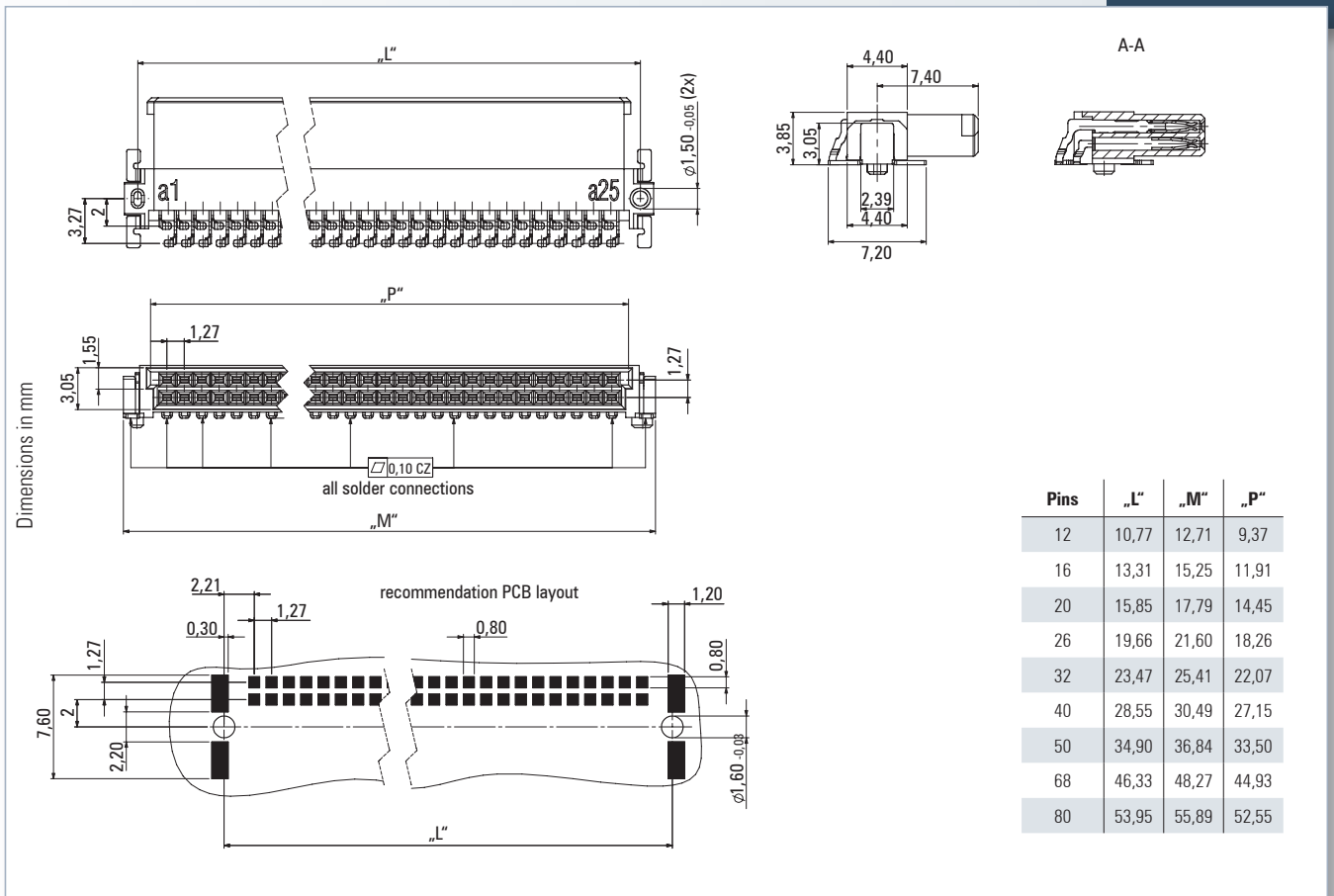
**Operational current:** 1.4 A at 20°C (50 pins)

**Packaging:** Tape and Reel

**Standards:**  

Technical Specification on page 7

For drawings and technical data visit [www.ept.de](http://www.ept.de)



### Mating connector / Application:



for horizontal applications (p. 12-13)



for perpendicular applications (p. 8-11)



Female connector angled - Performance level I •••

Number of pins	Part number
12	404-51012-51
16	404-51016-51
20	404-51020-51
26	404-51026-51
32	404-51032-51
40	404-51040-51
50	404-51050-51
68	404-51068-51
80	404-51080-51

**On request**

- different number of pins
- other performance level

## Female connector IDC



**Type:** Female connector IDC

**Number of pins:** 12 to 80

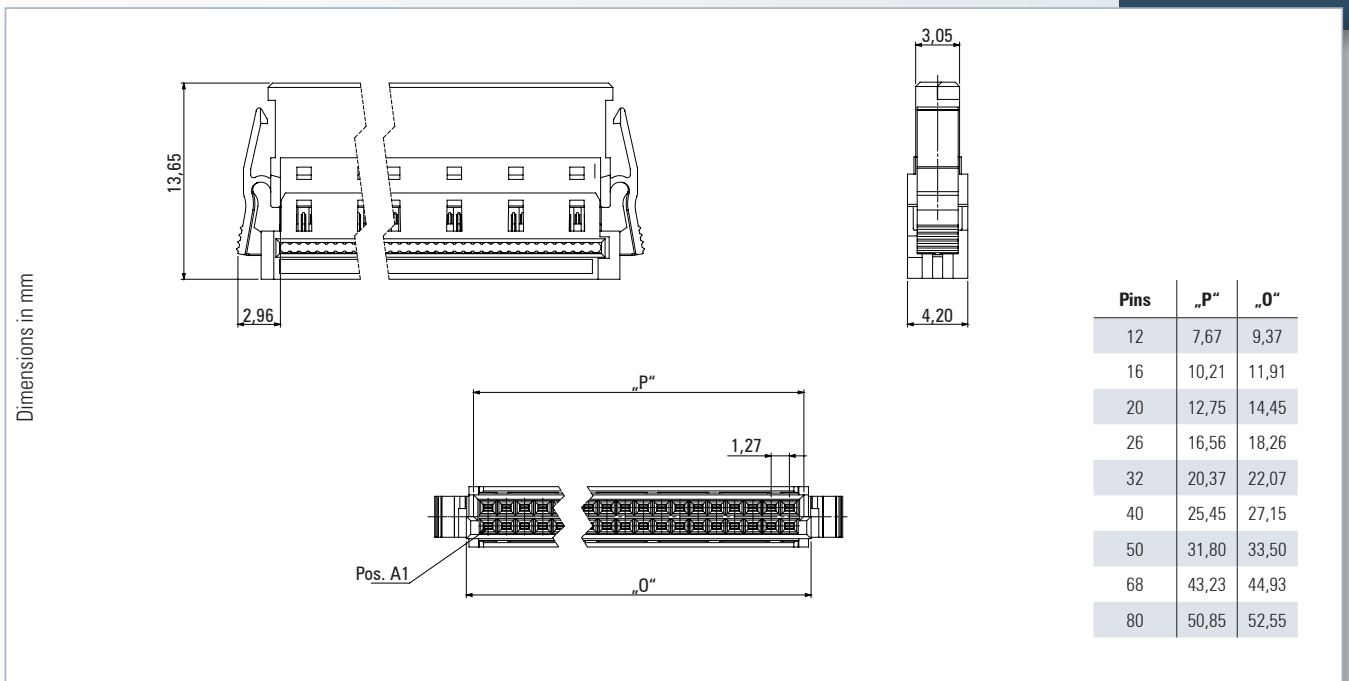
**Pitch:** 1.27 mm

**Packaging:** Tape and Reel

**Standards:**

Technical Specification on page 7

For drawings and technical data visit [www.ept.de](http://www.ept.de)



**Note**

The female IDC is designed to be reused for cable assembly. Observe the recommendations for processing.

**Mating connector / Application:**

Mating connector straight (p. 8-11)

Mating connector angled (p. 12-13)

Cable assembly for female IDC (p. 22-23)



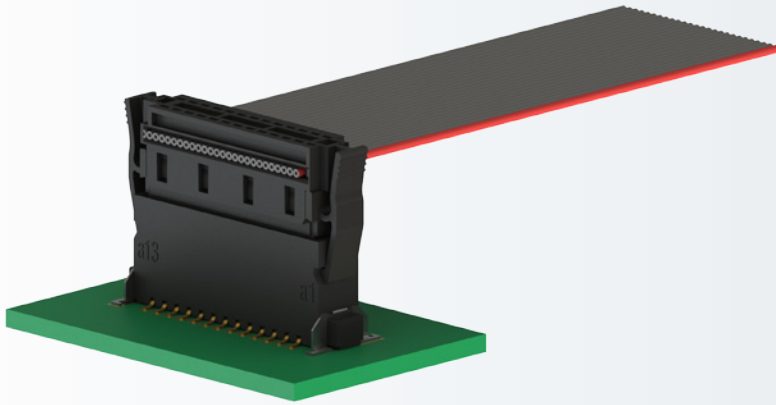
**Female connector IDC - Performance level I**

Number of pins	Part number
12	404-59012-61
16	404-59016-61
20	404-59020-61
26	404-59026-61
32	404-59032-61
40	404-59040-61
50	404-59050-61
68	404-59068-61
80	404-59080-61

**On request**

- different number of pins
- other performance level
- pre-assembled with cable (p. 22-23)

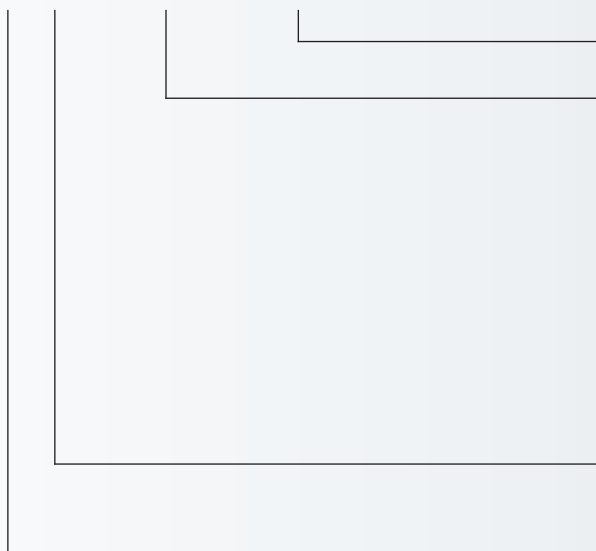
## One27 Female IDC pre-assembled with cable



- female connector IDC see p. 20 and 21
- user defines orientation of connectors, number of pins and cable length
- AWG 30/7
- assembly in insulation displacement connectors (IDC)
- three cable types available
- colored lead on a1

## Product key

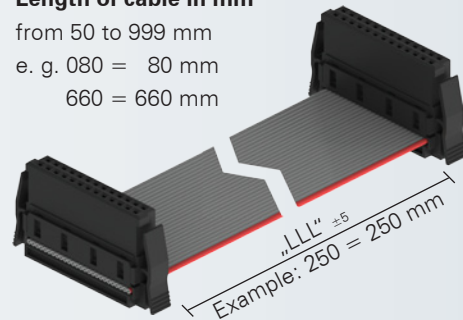
404 - 6XNN - LLL - CCC - 1



see next page

### Length of cable in mm

from 50 to 999 mm  
e. g. 080 = 80 mm  
660 = 660 mm



### Number of pins

12, 16, 20, 26, 32, 40, 50, 68, 80

### Type of cable

X	Type of cable	Temperature area
1	PVC	-30°C to +105°C (in idle state)
2	TPE-S (high-temperature-resistant)	-60°C to +125°C (in idle state)
3	TPE-0 (Halogen-free)	-40°C to +105°C (in idle state)

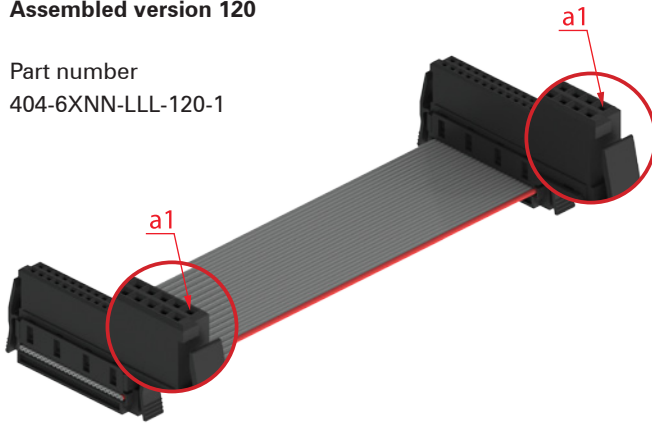
Data sheets on request



## Assembled versions

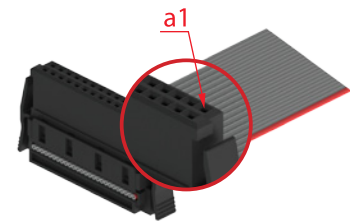
### Assembled version 120

Part number  
404-6XNN-LLL-120-1



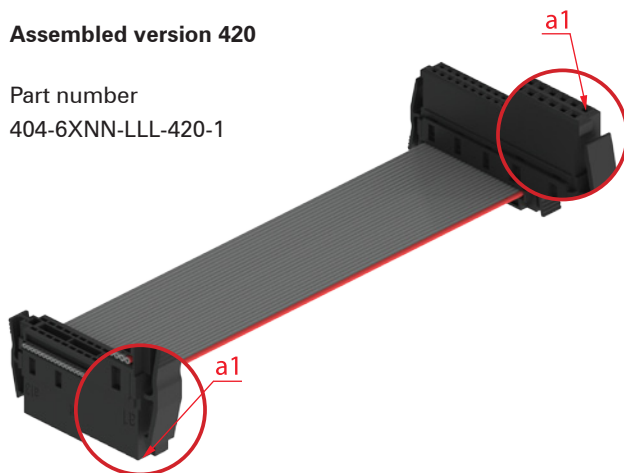
### Assembled version 100

Part number  
404-6XNN-LLL-100-1



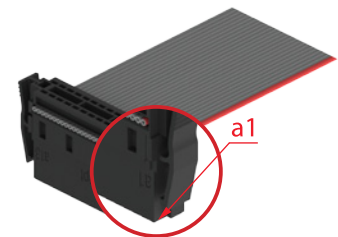
### Assembled version 420

Part number  
404-6XNN-LLL-420-1



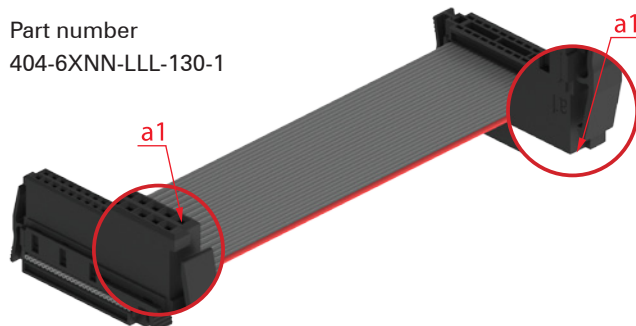
### Assembled version 400

Part number  
404-6XNN-LLL-400-1



### Assembled version 130

Part number  
404-6XNN-LLL-130-1



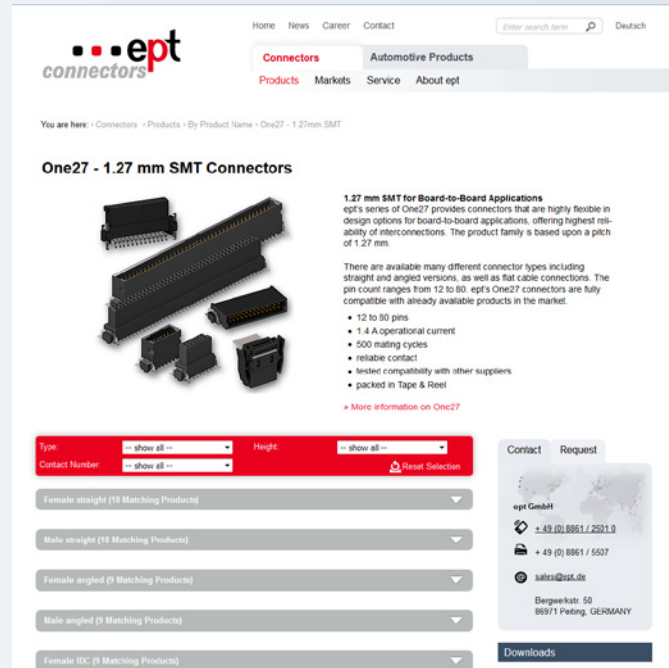
**On request**

- other assembled versions

For more Information visit Sie [www.ept.de](http://www.ept.de)!

On our website, [www.ept.de](http://www.ept.de), we offer a broad range of information, downloads, and interactive search functions for our connectors:

- component data that can be downloaded in 3D format (IGES, STEP) and 2D format (DXF)
- a product finder for choosing connectors based on your individual requirements
- an order form for product samples
- technical information, recommendations for processing
- drawings of individual products in PDF format



## Product Samples

You can receive product samples from ept quickly, easily, and free of charge, either by making a quick and easy selection at [www.ept.de](http://www.ept.de), or by contacting us directly and discussing your needs with us personally, especially if you have specific requirements, such as modifications. For detailed discussion and individual consultation, you can speak to our sales representative in your area, our service staff in Peiting, our local business partner or retailer as well as selected catalog distributors.

**We are standing by to advise you!**

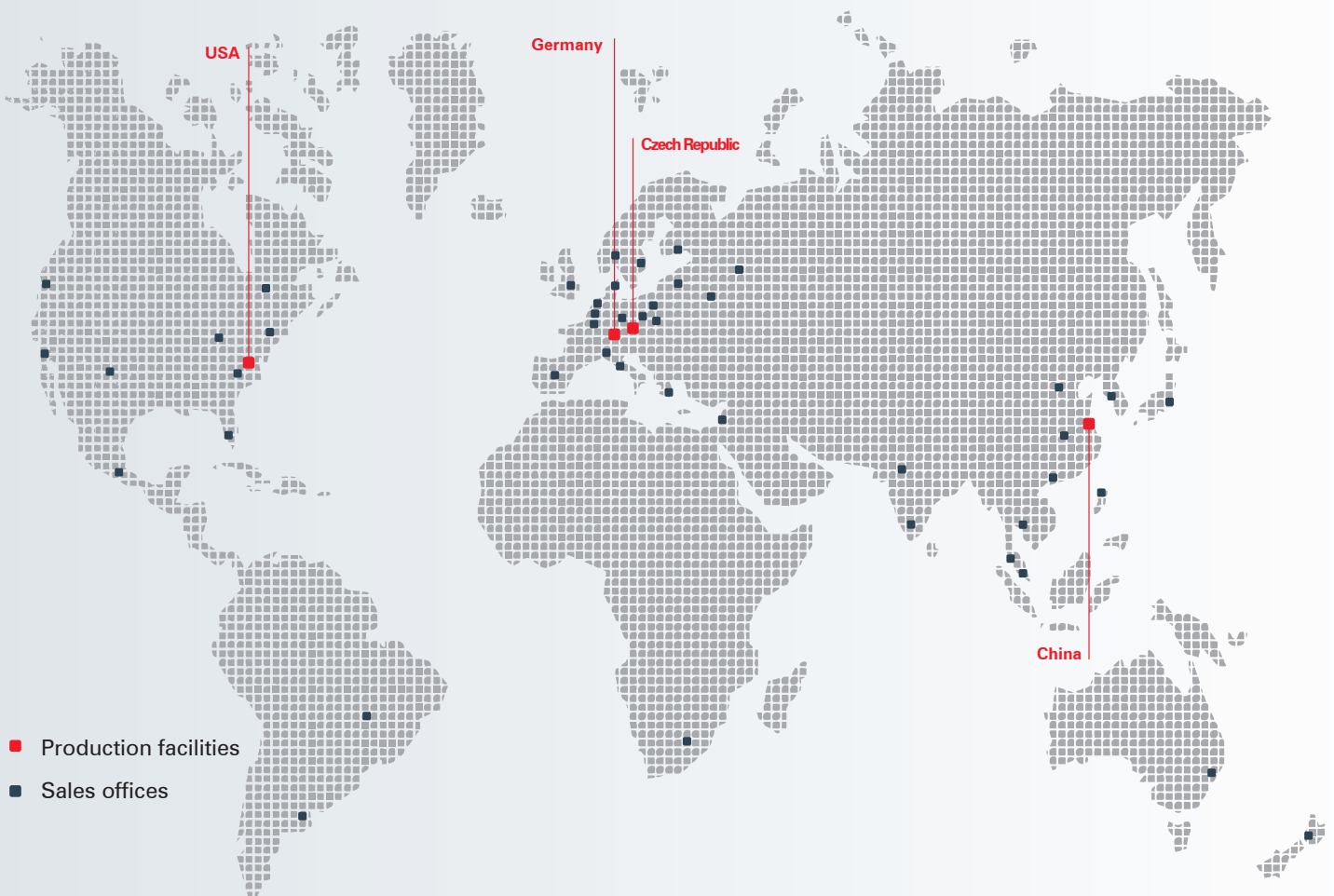


## International Presence - the ept Locations

ept's roots are located in the scenic landscape of southern Bavaria and from there ept has set out to become an international company. With production locations and sales offices in several countries as well as competent partners

all over the world, ept is able to offer its connectors and solutions worldwide.

**ept – your global partner**



For your local contact please refer to [www.ept.de](http://www.ept.de)

# *connectors*

ept designs, produces and distributes electronic connectors for highquality applications. Founded by Bernhard Guglhör over 40 years ago, we are proud to remain an independent and family owned company. Today, we employ 1.000 people at six locations worldwide.

Over decades we have built trusting and successful partnerships with our customers, who are the primary focus of all. Our products and core competencies are used in high-level applications.

With our motto "Precision with Passion" ept stands for the highest quality and reliability under the personal and individual touch of dedicated employees.

**We are looking forward to working with you.**  
**Your ept-Team**

## **ept GmbH**

Bergwerkstr. 50  
86971 Peiting, Germany  
Tel. +49 (0) 88 61 / 25 01 0  
Fax +49 (0) 88 61 / 55 07  
sales@ept.de

## **ept, inc.**

805 Liberty Way  
Chester, Virginia 23836, USA  
Tel. +1 804 530 0820  
800 323 2568  
Fax +1 804 530 0837  
sales@eptusa.com

## **ept Electronic Precision Technology (Shanghai) Ltd.**

6F Building 37,  
No. 333 Qin Jiang Road  
Shanghai, P. R. China  
Post code: 20 02 33  
Tel. +86 (0) 21-54 26-09 88  
Fax +86 (0) 21-64 95-39 49  
sales@eptcn.com



[www.ept.de](http://www.ept.de)