

# CMM-AL | Hinges

Aluminium



- 1
- 2
- 3
- 4
- 5
- 6
- 7
- 8
- 9
- 10
- 11
- 12
- 13
- 14
- 15
- 16
- 17
- 18

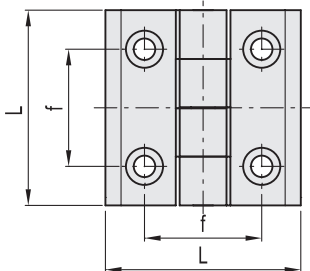
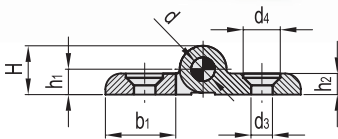
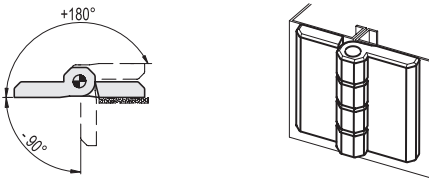
**MATERIAL**  
Anodised aluminium

**COLOUR**  
Natural, matte finish.

**ROTATING PIN**  
AISI 304 stainless steel.

**STANDARD EXECUTION**  
Pass-through holes for countersunk head screws.

**ROTATION ANGLE (APPROXIMATE VALUE)**  
Max 270° (-90° and +180° being 0° the condition where the two interconnected surfaces are on the same plane).  
Do not exceed the rotation angle limit so as not to prejudice the hinge mechanical performance.



# CMZ. | Hinge with slotted holes

Die-cast zinc alloy



**MATERIAL**  
Die-cast zinc alloy.

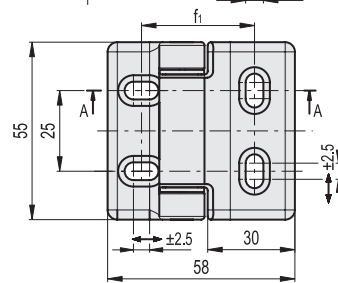
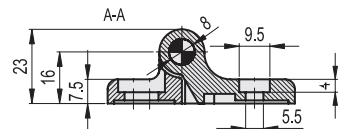
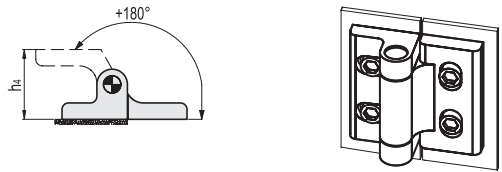
**COLOUR**  
Black painting, matte finish.

**ROTATING PIN**  
AISI 304 stainless steel.

**GUIDE BUSHINGS FOR PIN**  
Polyamide based (PA) technopolymer.

**STANDARD EXECUTION**  
Pass-through slotted holes for cylindrical head screws which allow the adjustment during the fitting operation.

**ROTATION ANGLE (APPROXIMATE VALUE)**  
Max 180° (-0° and +180° being 0° the condition where the two interconnected surfaces are on the same plane).  
Do not exceed the rotation angle limit so as not to prejudice the hinge mechanical performance.



Code	Description	L	d3	d4	f	H	h1	h2	b1	d	Δ
428649	CMM-AL-40-SH-5	40	5.5	10.5	25	10.5	5.5	5	17	4	25
428651	CMM-AL-50-SH-5	50	5.5	10.5	30	12.5	6.5	6	22	6	50
428652	CMM-AL-50-SH-6	50	6.5	12.5	30	12.5	6.5	6	22	6	47
428655	CMM-AL-60-SH-8	60	8.5	16.5	36	16.5	8.5	8	25	8	94

Code	Description	Δ
428921	CMZ.55-SL-5	175