

**LTM8083**  
3V<sub>IN</sub> to 36V<sub>IN</sub>, 12V<sub>OUT</sub> at 1.5A  
Buck-Boost  $\mu$ Module Regulator

**DESCRIPTION**

Demonstration circuit 2859A is a step-up/-down DC/DC converter with a 3V to 36V input voltage range and a 12V output capable of 1.5A from 12 to 36V<sub>IN</sub>, 0.8A at 6V<sub>IN</sub>, and 0.25A at 3V<sub>IN</sub>, featuring the [LTM®8083](#).

The LTM8083 data sheet gives complete description of the device, including operation and application information. The data sheet must be read in conjunction with this demo manual prior to working on or modifying DC2859A.

**Key Features of This Board Include:**

- SYNC Input for External Synchronization
- CTRL Input for Adjusting Current Limit Threshold

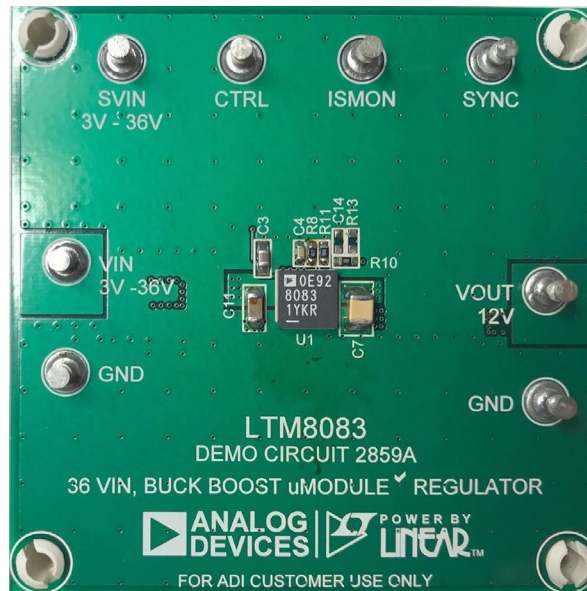
[Design files for this circuit board are available.](#)

All registered trademarks and trademarks are the property of their respective owners.

**PERFORMANCE SUMMARY** Specifications are at T<sub>A</sub> = 25°C

SYMBOL	PARAMETER	CONDITIONS	MIN	TYP	MAX	UNITS
V <sub>IN</sub>	Input Supply Range		3		36	V
f <sub>sw</sub>	Switching Frequency			1		MHz
V <sub>OUT</sub>	Output Voltage			12.0		V
I <sub>OUT</sub>	Maximum Output Current	V <sub>IN</sub> = 12V to 36V	1.5			A
I <sub>OUT</sub>	Maximum Output Current	V <sub>IN</sub> = 6V	0.8			A
V <sub>OUT</sub> (AC)	Output Ripple (Across C23/C30)	V <sub>IN</sub> = 12V, I <sub>OUT</sub> = 1.5A		40		mV <sub>p-p</sub>
$\eta$	Efficiency	V <sub>IN</sub> = 12V, I <sub>OUT</sub> = 1A		91.6		%

**BOARD PHOTO** Part marking is either ink mark or laser mark



## QUICK START PROCEDURE

Demo circuit 2859A is an easy way to evaluate the performance of the LTM8083. Refer to Figure 1 for proper measurement equipment setup, and follow the procedure below.

1. With power off, connect the input power supply “+” to VIN and “-” to GND. Connect the load from V<sub>OUT</sub> to GND.
2. Set voltage of the DC power supply at 6V. Turn on the power at the input.

NOTE: Make sure that the input voltage does not exceed 36V.

3. Check for the proper output voltage between V<sub>OUT</sub> and GND (V<sub>OUT</sub> = 12V).

NOTE: If there is no output, or output voltage value is out of the spec, temporarily disconnect the load to make sure that the load is not set too high.

NOTE: The circuit features frequency foldback to protect the power switches during a fault or output current overload.

4. Once the proper output voltage at each channel is established, adjust the load within the operating range and measure the output voltage regulation, ripple voltage, efficiency and other parameters.

NOTE: When measuring the input or output voltage ripple, care must be taken to avoid a long ground lead on the oscilloscope probe. Measure the input or output voltage ripple by touching the probe tip directly across the VIN and GND terminals, V<sub>OUT</sub>+ and GND terminals. See Figure 2 for proper scope probe technique.

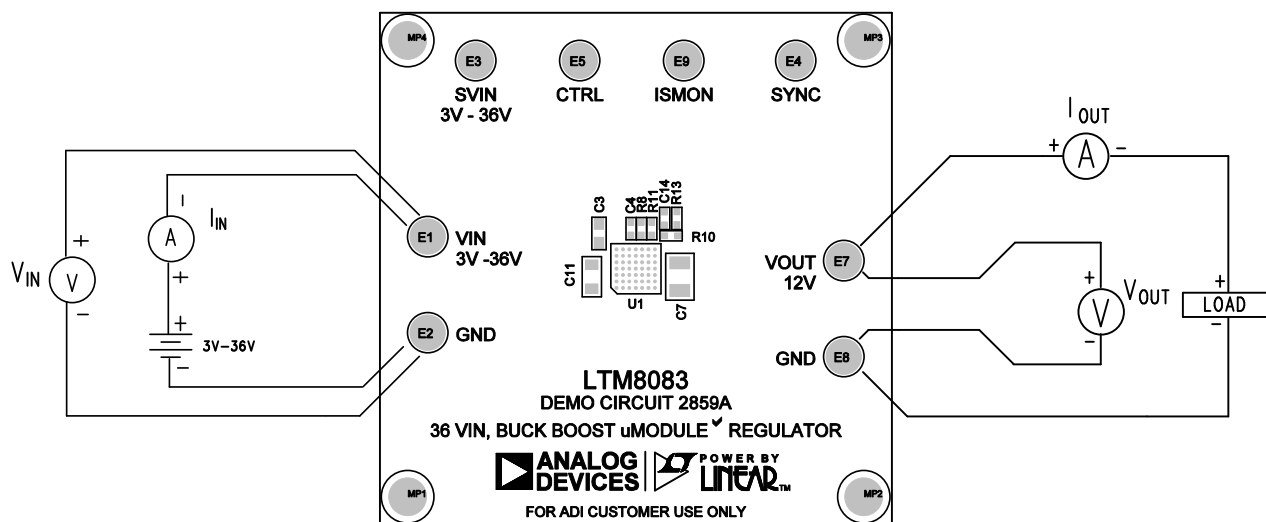


Figure 1. DC2859A Proper Equipment Setup

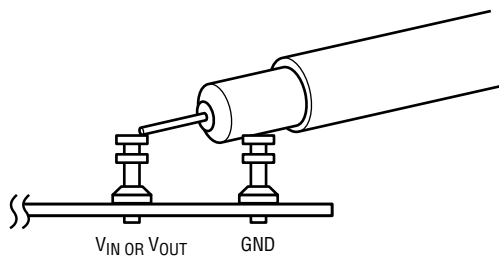


Figure 2. Measuring Input or Output Ripple

**QUICK START PROCEDURE**

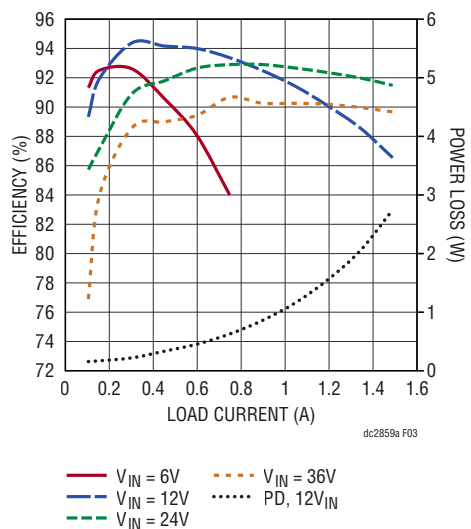


Figure 3. DC2859A Efficiency vs Load Current (12V without EMI Filter,  $T_A = 25^\circ C$ )

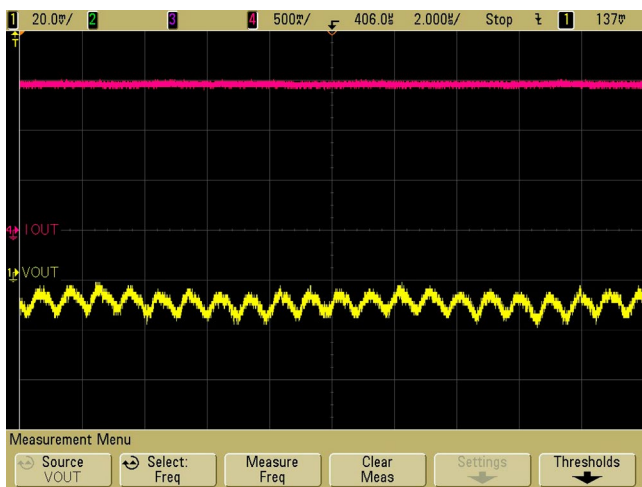


Figure 4. DC2859A Ripple ( $12V_{IN}$ ,  $I_{OUT} = 1.5A$ )



Figure 5. DC2859A Transient Response ( $12V_{IN}$ ,  $I_{OUT} = 0.5A$  to  $1A$ )

## QUICK START PROCEDURE

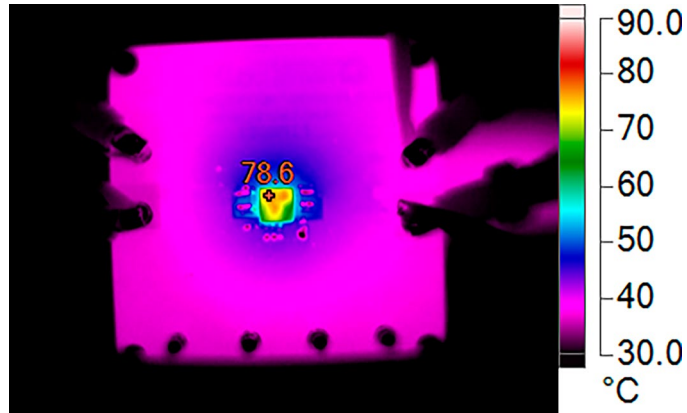


Figure 6. DC2859A Thermal Performance ( $6V_{IN}$ ,  $I_{OUT1} = 0.8A$ ,  $T_A = 25^\circ C$ )

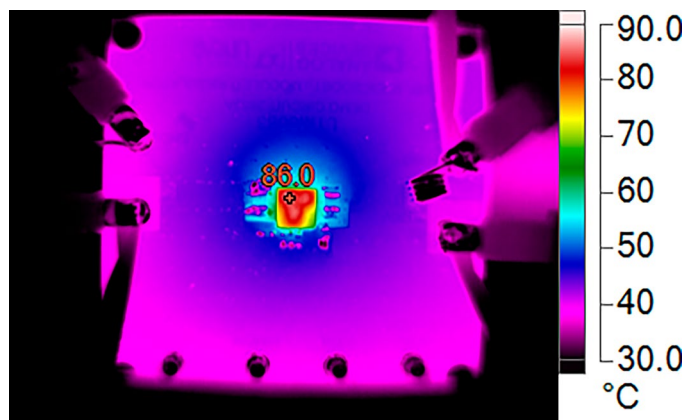


Figure 7. DC2859A Thermal Performance ( $12V_{IN}$ ,  $I_{OUT1} = 1.45A$ ,  $T_A = 25^\circ C$ )

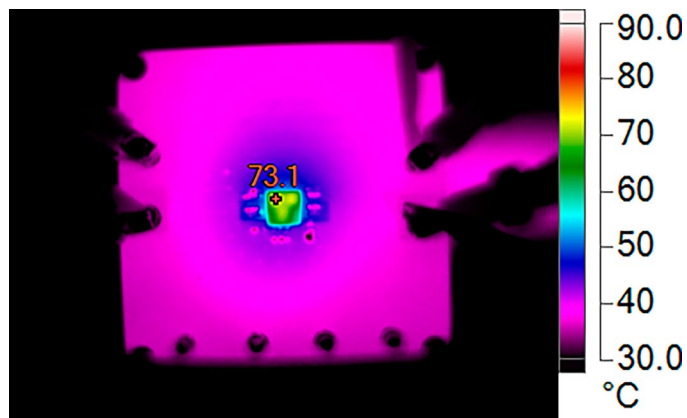
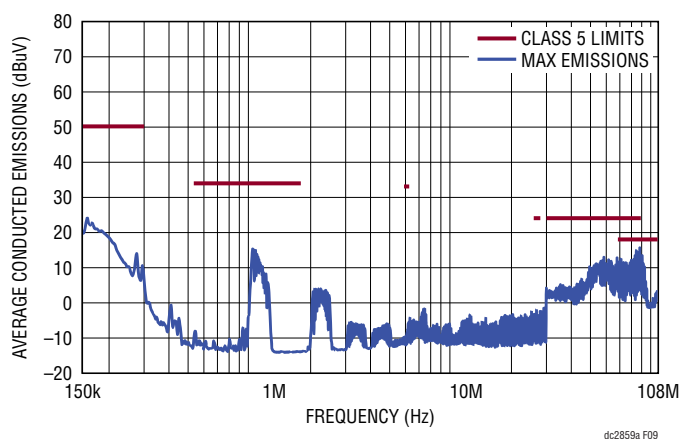
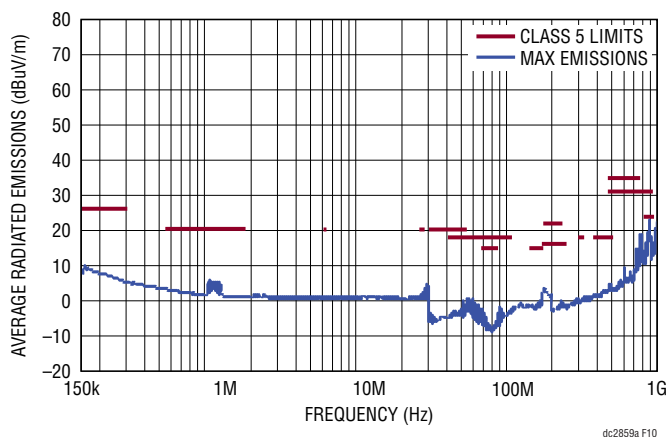


Figure 8. DC2859A Thermal Performance ( $36V_{IN}$ ,  $I_{OUT1} = 1.5A$ ,  $T_A = 25^\circ C$ )

**QUICK START PROCEDURE**



**Figure 9. Conducted Emissions Scan of the LTM8083; Producing 12V<sub>OUT</sub> at 1.5A, from 12V<sub>IN</sub>; DC2859A Hardware; f<sub>sw</sub> = 1MHz; Measured in a 10m Chamber; Peak Detect Method**



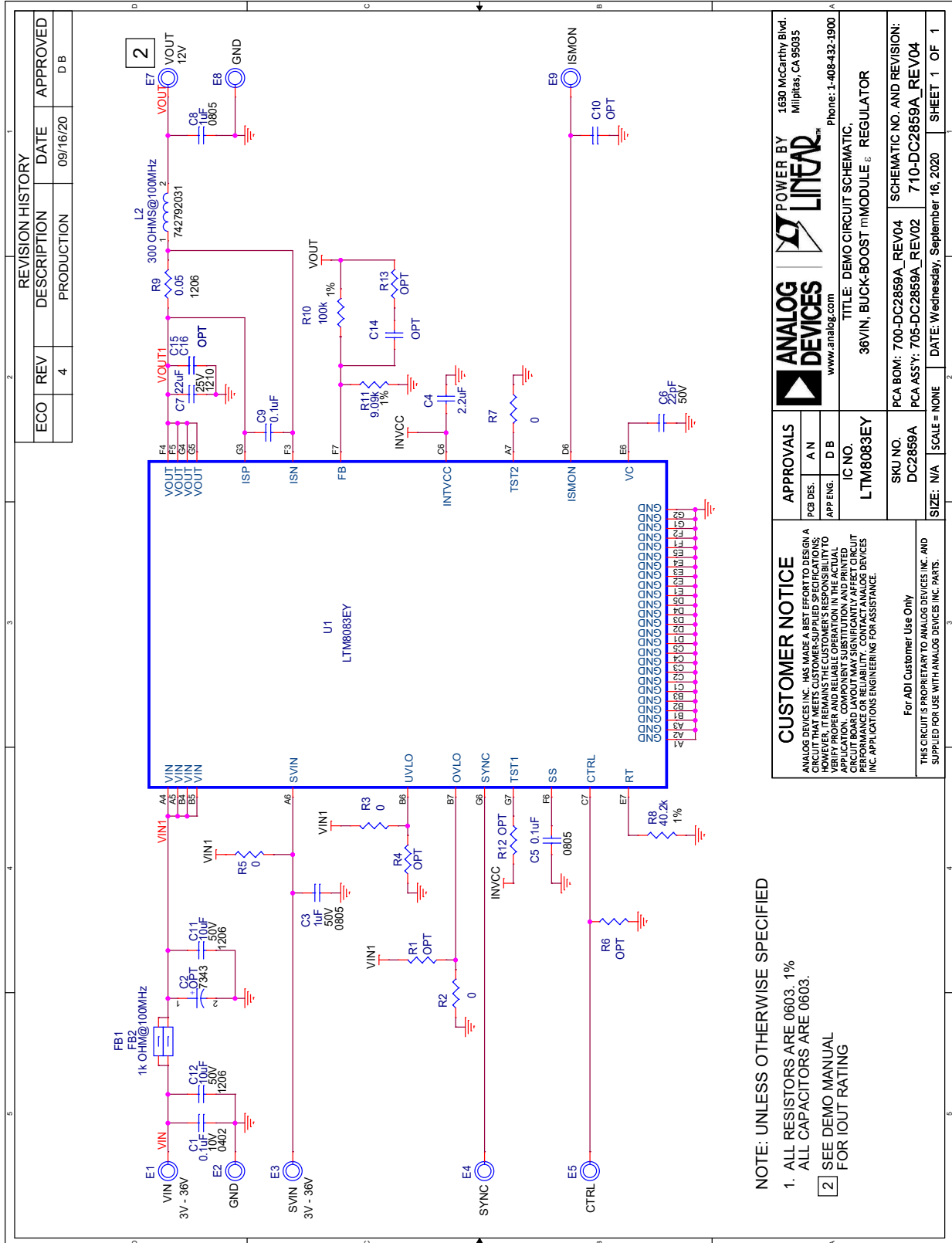
**Figure 10. Radiated Emissions Scan of the LTM8083; Producing 12V<sub>OUT</sub> at 1.5A, from 12V<sub>IN</sub>. DC2859A Hardware; f<sub>sw</sub> = 1MHz; Measured in a 10m Chamber; Peak Detect Method**

# DEMO MANUAL DC2859A

## PARTS LIST

ITEM	QTY	REFERENCE	PART DESCRIPTION	MANUFACTURER/PART NUMBER
<b>Required Circuit Components</b>				
1	1	C1	CAP, 0.1 $\mu$ F, X5R, 10V, 10%, 0402	KEMET, C0402C104K8PAC7867
2	1	C3	CAP, 1 $\mu$ F, X7R, 50V, 10%, 0805	AVX, 08055C105KAT2A
3	1	C4	CAP, 2.2 $\mu$ F, X5R, 25V, 10%, 0603	MURATA, GRM188R61E225KA12D
4	1	C5	CAP, 0.1 $\mu$ F, X7R, 50V, 10%, 0805	AVX, 08055C104KAT2A
5	1	C6	CAP, 22pF, COG, 50V, 5%, 0603	AVX, 06035A220JAT2A
6	1	C7	CAP, 22 $\mu$ F, X5R, 25V, 10%, 1210	KEMET, C1210C226K3PACTU
7	1	C8	CAP, 1 $\mu$ F, X7R, 25V, 10%, 0805	AVX, 08053C105KAT2A
8	1	C9	CAP, 0.1 $\mu$ F, X7R, 25V, 10%, 0603	AVX, 06033C104KAT2A
9	2	C11, C12	CAP, 10 $\mu$ F, X7R, 50V, 10%, 1206	SAMSUNG, CL31B106KBHNNNE
10	2	FB1, FB2	IND., 1k AT 100MHz, FERRITE BEAD, 25%, 1.5A, 150m $\Omega$ , 0805	TDK, MPZ2012S102AT000
11	1	L2	IND., 300 $\Omega$ AT 100MHz, FERRITE BEAD, 25%, 0805	WURTH ELEKTRONIK, 742792031
12	1	R8	RES., 40.2k, 1%, 1/10W, 0603, AEC-Q200	NIC, NRC06F4022TRF
13	1	R9	RES., 0.05 $\Omega$ , 1%, 1/4W, 1206, SENSE	VISHAY, WSL1206R0500FEA
14	1	R10	RES., 100k, 1%, 1/10W, 0603	STACKPOLE ELECTRONICS, INC., RMCF0603FG100K
15	1	R11	RES., AEC-Q200, 9.09k, 1%, 1/10W, 0603	VISHAY, CRCW06039K09FKEA
16	1	U1	IC, 36V <sub>IN</sub> 1.25A BUCK-BOOST $\mu$ Module <sup>®</sup> REGULATOR, BGA-49	ANALOG DEVICES, LTM8083EY#PBF
<b>Additional Demo Board Circuit Components</b>				
1	0	C2	CAP, OPTION, 7343	
2	0	C10	CAP, OPTION, 0603	
3	0	C14–C16	CAP, OPTION, 1210	
4	0	R1, R4, R6, R12, R13	RES., OPTION, 0603	
5	4	R2, R3, R5, R7	RES., 0 $\Omega$ , 1/10W, 0603	VISHAY, CRCW06030000Z0EA
<b>Hardware</b>				
1	8	E1–E5, E7–E9	TEST POINT, TURRET, 0.094", MTG. HOLE	MILL-MAX, 2501-2-00-80-00-00-07-0
2	4	MP1–MP4	STANDOFF, NYLON, SNAP-ON, 0.375"	KEYSTONE, 8832

FULL SCHEMATIC



REVISION HISTORY				
ECO	REV	DESCRIPTION	DATE	APPROVED
	4	PRODUCTION	09/16/20	D B

POWER BY 1630 McCarthy Blvd. Milpitas, CA 95035		Phone: 1-408-432-1900	
www.analog.com		TITLE: DEMO CIRCUIT SCHEMATIC,	
APPROVALS PCB DES: A N APP ENG: D B		IC NO. LTM8083EY	
CUSTOMER NOTICE ANALOG DEVICES INC. HAS MADE A BEST EFFORT TO DESIGN A CIRCUIT THAT MEETS CUSTOMER-SUPPLIED SPECIFICATIONS. THE USER MUST VERIFY THE ACTUAL PART NUMBER AND PART TO VERIFY PROPER AND RELIABLE OPERATION IN THE ACTUAL APPLICATION. COMPONENT SUBSTITUTION AND PRINTED CIRCUIT BOARD LAYOUT MAY SIGNIFICANTLY AFFECT CIRCUIT PERFORMANCE. CONTACT ANALOG DEVICES INC. APPLICATIONS ENGINEERING FOR ASSISTANCE.		For ADI Customer Use Only THIS CIRCUIT IS PROPRIETARY TO ANALOG DEVICES INC. AND SUPPLIED FOR USE WITH ANALOG DEVICES INC. PARTS.	
SKU NO. DC2859A		TITLE: DEMO CIRCUIT SCHEMATIC,	
SIZE: N/A   SCALE = NONE		PCB BOM: 700-DC2859A_REV04 PCA ASSY: 705-DC2859A_REV02 DATE: Wednesday, September 16, 2020	
Schematic No. and Revision: DC2859A REV04		SHEET 1 OF 1	

NOTE: UNLESS OTHERWISE SPECIFIED

- ALL RESISTORS ARE 0603. 1%  
ALL CAPACITORS ARE 0603.

2 SEE DEMO MANUAL FOR IOUT RATING



## ESD Caution

**ESD (electrostatic discharge) sensitive device.** Charged devices and circuit boards can discharge without detection. Although this product features patented or proprietary protection circuitry, damage may occur on devices subjected to high energy ESD. Therefore, proper ESD precautions should be taken to avoid performance degradation or loss of functionality.

## Legal Terms and Conditions

By using the evaluation board discussed herein (together with any tools, components documentation or support materials, the "Evaluation Board"), you are agreeing to be bound by the terms and conditions set forth below ("Agreement") unless you have purchased the Evaluation Board, in which case the Analog Devices Standard Terms and Conditions of Sale shall govern. Do not use the Evaluation Board until you have read and agreed to the Agreement. Your use of the Evaluation Board shall signify your acceptance of the Agreement. This Agreement is made by and between you ("Customer") and Analog Devices, Inc. ("ADI"), with its principal place of business at One Technology Way, Norwood, MA 02062, USA. Subject to the terms and conditions of the Agreement, ADI hereby grants to Customer a free, limited, personal, temporary, non-exclusive, non-sublicensable, non-transferable license to use the Evaluation Board FOR EVALUATION PURPOSES ONLY. Customer understands and agrees that the Evaluation Board is provided for the sole and exclusive purpose referenced above, and agrees not to use the Evaluation Board for any other purpose. Furthermore, the license granted is expressly made subject to the following additional limitations: Customer shall not (i) rent, lease, display, sell, transfer, assign, sublicense, or distribute the Evaluation Board; and (ii) permit any Third Party to access the Evaluation Board. As used herein, the term "Third Party" includes any entity other than ADI, Customer, their employees, affiliates and in-house consultants. The Evaluation Board is NOT sold to Customer; all rights not expressly granted herein, including ownership of the Evaluation Board, are reserved by ADI. CONFIDENTIALITY. This Agreement and the Evaluation Board shall all be considered the confidential and proprietary information of ADI. Customer may not disclose or transfer any portion of the Evaluation Board to any other party for any reason. Upon discontinuation of use of the Evaluation Board or termination of this Agreement, Customer agrees to promptly return the Evaluation Board to ADI. ADDITIONAL RESTRICTIONS. Customer may not disassemble, decompile or reverse engineer chips on the Evaluation Board. Customer shall inform ADI of any occurred damages or any modifications or alterations it makes to the Evaluation Board, including but not limited to soldering or any other activity that affects the material content of the Evaluation Board. Modifications to the Evaluation Board must comply with applicable law, including but not limited to the RoHS Directive. TERMINATION. ADI may terminate this Agreement at any time upon giving written notice to Customer. Customer agrees to return to ADI the Evaluation Board at that time. LIMITATION OF LIABILITY. THE EVALUATION BOARD PROVIDED HEREUNDER IS PROVIDED "AS IS" AND ADI MAKES NO WARRANTIES OR REPRESENTATIONS OF ANY KIND WITH RESPECT TO IT. ADI SPECIFICALLY DISCLAIMS ANY REPRESENTATIONS, ENDORSEMENTS, GUARANTEES, OR WARRANTIES, EXPRESS OR IMPLIED, RELATED TO THE EVALUATION BOARD INCLUDING, BUT NOT LIMITED TO, THE IMPLIED WARRANTY OF MERCHANTABILITY, TITLE, FITNESS FOR A PARTICULAR PURPOSE OR NON-INFRINGEMENT OF INTELLECTUAL PROPERTY RIGHTS. IN NO EVENT WILL ADI AND ITS LICENSORS BE LIABLE FOR ANY INCIDENTAL, SPECIAL, INDIRECT, OR CONSEQUENTIAL DAMAGES RESULTING FROM CUSTOMER'S POSSESSION OR USE OF THE EVALUATION BOARD, INCLUDING BUT NOT LIMITED TO LOST PROFITS, DELAY COSTS, LABOR COSTS OR LOSS OF GOODWILL. ADI'S TOTAL LIABILITY FROM ANY AND ALL CAUSES SHALL BE LIMITED TO THE AMOUNT OF ONE HUNDRED US DOLLARS (\$100.00). EXPORT. Customer agrees that it will not directly or indirectly export the Evaluation Board to another country, and that it will comply with all applicable United States federal laws and regulations relating to exports. GOVERNING LAW. This Agreement shall be governed by and construed in accordance with the substantive laws of the Commonwealth of Massachusetts (excluding conflict of law rules). Any legal action regarding this Agreement will be heard in the state or federal courts having jurisdiction in Suffolk County, Massachusetts, and Customer hereby submits to the personal jurisdiction and venue of such courts. The United Nations Convention on Contracts for the International Sale of Goods shall not apply to this Agreement and is expressly disclaimed.