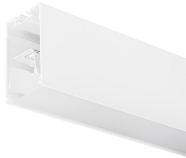


Mini Continuum II - Direct - Trimless

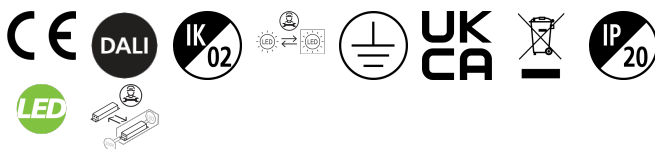
MC2 2.4M 4K DALI WHT OPAL

2093117



Product features

- 2093117 MC2 2.4M 4K DALI WHT OPAL Continuous lines of LED light, white RAL 9016, direct distribution, trimless detail for a seamless finish, suitable for recessed, semi-recessed, surface-mounted or suspended installation either horizontally or vertically, various accessories available, compact and minimalist design based on the Golden Mean, ideal for offices, meeting rooms, corridors, education facilities, museums and libraries, extruded aluminium body, diffuser: opal, colour temperature: 4000K neutral white, total system power: 42W, total fixture output: 4700lm, luminaire efficacy: 112lm/W, LOR: 100%, colour rendering: Ra >80, LED Chromacity: 3 step MacAdam ellipse, lifespan: 66,000 hours L90B10, IR/UV free light source without heat radiation, operating voltage: 220-240V / 50-60Hz, drive current: 800mA, electronic driver, DALI dimmable, electrical protection: CLASS I, IP20, suitable for internal environment only.



PRODUCT OVERVIEW

Product name	MC2 2.4M 4K DALI WHT OPAL
Technology	LED
Housing	Aluminium
Mount	Track mounting
Environment	Internal
General application	Education, Hospitality, Office, Retail
ETIM Class	EC002892
E-number FI	4237844
Warranty	5 years
Fixture luminous flux (lm)	4700
Luminaire efficacy (lm/W)	112
LOR (%)	100
Colour temperature (K)	4000
Light colour	Neutral White
CRI (Ra)	80
Colour Variation Initial (SDCM)	SDCM3
Glare control	< 24
Photobiological Risk Group	RG0
Total power consumption (W)	42
Electrical protection	Class I
Control gear type	Electronic ballast
Dimming method	DALI
Minimum dimming level (%)	1
Housing colour	White
IP rating	IP20
IK rating	IK02
Product EAN number	5025768931170

Mini Continuum II - Direct - Trimless

MC2 2.4M 4K DALI WHT OPAL
2093117

DATA TABLE

General data

Product name	MC2 2.4M 4K DALI WHT OPAL
Technology	LED
Housing	Aluminium
Mount	Track mounting
Environment	Internal
General application	Education, Hospitality, Office, Retail
Performance ambient temperature Tq (°C)	25
ETIM Class	EC002892
E-number FI	4237844
Warranty	5 years

Optical data

Fixture luminous flux (lm)	4700
Luminaire efficacy (lm/W)	112
LOR (%)	100
Colour temperature (K)	4000
Light colour	Neutral White
CRI (Ra)	80
Colour Variation Initial (SDCM)	SDCM3
Adjustable chromaticity	N
Glare control	< 24
Photobiological Risk Group	RG0

Electrical data

Total power consumption (W)	42
Mains voltage (V)	220-240V
Lamp power factor	0.98
Electrical protection	Class I
Control gear type	Electronic ballast
Transformer required	Yes
Dimming method	DALI
Minimum dimming level (%)	1
Drive current (mA)	800
Inrush Current (A)	40
Inrush Duration (µs)	178
Energy Efficiency Class (A->G) of contained light source	C
Max. Luminaires per 10A C Breaker	15
Max. Luminaires per 13A C Breaker	20
Max. Luminaires per 16A C Breaker	23
Max. Luminaires per 20A C Breaker	30
Max. Luminaires per 10A B Breaker	9
Max. Luminaires per 13A B Breaker	12
Max. Luminaires per 16A B Breaker	14
Max. Luminaires per 20A B Breaker	18

Mini Continuum II - Direct - Trimless

MC2 2.4M 4K DALI WHT OPAL

2093117

Lifetime data

Lifespan L70 B50	120000
Lifespan L80 B20	120000
Lifespan L90 B10	66000

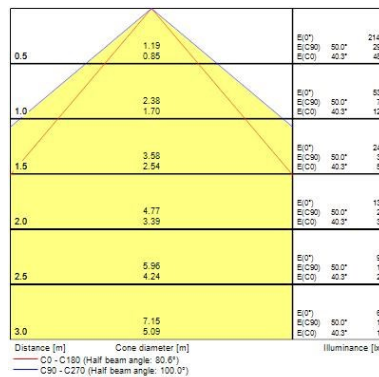
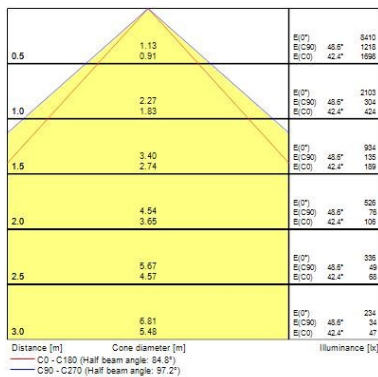
Physical data

Housing colour	White
IP rating	IP20
IK rating	IK02
Diffuser finish	Opal
Diffuser material	PC Polycarbonate
Nominal Product Length (mm)	2400
Nominal Product Width (mm)	54
Nominal Product Height (mm)	86
Cutout Dimensions (W x L in mm or Diameter in mm)	60 x 2400
Weight (kg)	5.544
Recessed Depth (mm)	136

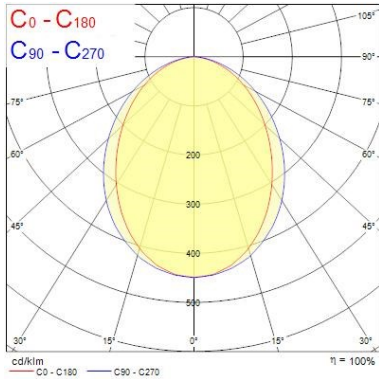
Packaging

Single packaging type	Carton
Product EAN number	5025768931170
Packaging single length / height (cm)	242.2
Packaging single width (cm)	14.7
Packaging single depth (cm)	15.0
DUN14 (outer)	05025768931170
Units per outer package	1
Packaging outer length / height (cm)	242.2
Packaging outer width (cm)	14.7
Packaging outer depth (cm)	15.0

PHOTOMETRY

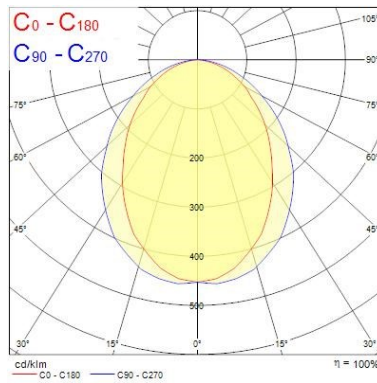
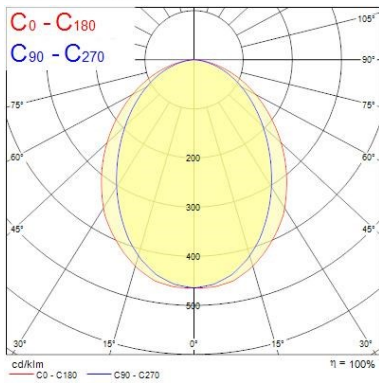


Mini Continuum II - Direct - Trimless MC2 2.4M 4K DALI WHT OPAL 2093117



Distance [m]	Cone diameter [m]	E [lx]	E [lx]	E [lx]
0.5	0.86 1.11	7946	40.8°	1130
1.0	1.71 2.22	1987	40.8°	458
1.5	2.57 3.33	883	40.8°	190
2.0	3.43 4.44	497	40.8°	139
2.5	4.29 5.55	318	40.8°	70
3.0	5.14 6.66	221	40.8°	48

Distance [m] Cone diameter [m] Illuminance [lx]
 C0 - C180 (Half beam angle: 96.0°)
 C90 - C270 (Half beam angle: 91.2°)



TECHNICAL DRAWINGS

