

Interchangeable jaw grip, unstepped

for 4-jaw lathe chuck



Application:

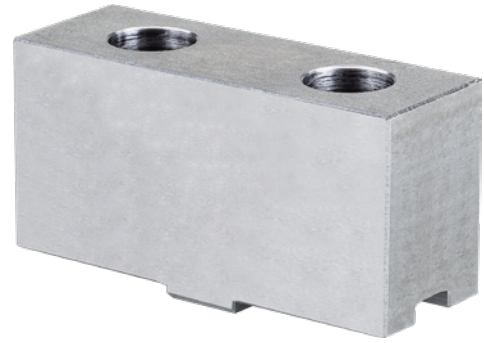
For clamping workpieces on jaw chucks.

Execution:

- Soft and capable of being hardened

Delivery:

All sets have 4 pieces, including the screws



Art. no.	22422 030
Brand	RÖHM
Manufacturer Part Number	107642
For chuck diameter	125 mm
Length	62 mm
Jaws width	26.5 mm
Width	7.96 mm
Height	38 mm
Bar width	12.68 mm
Design	Unhardened
Gross Weight	1.434 kg
Product Group	203

EAN

4019208034607