

Gewindestifte mit Innensechskant und Kegelkuppe DIN 913 ohne LONG-LOK

Artikelbeschreibung/Produktabbildungen



Beschreibung

Werkstoff:

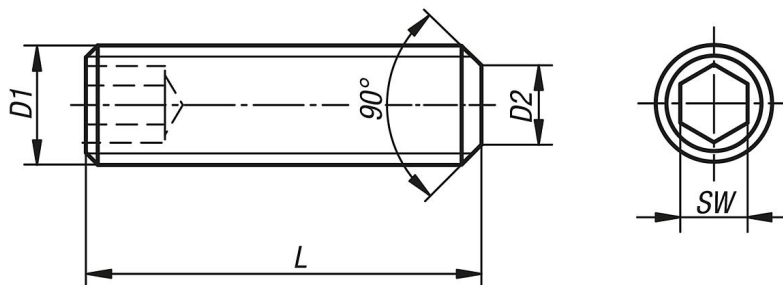
Stahl oder Edelstahl A2.

Ausführung:

Stahl Festigkeitsklasse 45 H, schwarz.

Edelstahl A2-70, blank.

Zeichnungen



Artikelübersicht

Gewindestifte mit Innensechskant und Kegelkuppe DIN 913

| Bestellnummer | Material Grundkörper | L | D1 | D2 | SW |
|---------------|----------------------|----|----|-----|-----|
| K0707.03X5 | Stahl | 5 | M3 | 2 | 1,5 |
| K0707.03X6 | Stahl | 6 | M3 | 2 | 1,5 |
| K0707.03X8 | Stahl | 8 | M3 | 2 | 1,5 |
| K0707.03X10 | Stahl | 10 | M3 | 2 | 1,5 |
| K0707.03X12 | Stahl | 12 | M3 | 2 | 1,5 |
| K0707.03X16 | Stahl | 16 | M3 | 2 | 1,5 |
| K0707.03X20 | Stahl | 20 | M3 | 2 | 1,5 |
| K0707.04X5 | Stahl | 5 | M4 | 2,5 | 2 |
| K0707.04X6 | Stahl | 6 | M4 | 2,5 | 2 |
| K0707.04X8 | Stahl | 8 | M4 | 2,5 | 2 |
| K0707.04X10 | Stahl | 10 | M4 | 2,5 | 2 |
| K0707.04X12 | Stahl | 12 | M4 | 2,5 | 2 |
| K0707.04X16 | Stahl | 16 | M4 | 2,5 | 2 |
| K0707.04X20 | Stahl | 20 | M4 | 2,5 | 2 |
| K0707.04X25 | Stahl | 25 | M4 | 2,5 | 2 |
| K0707.05X5 | Stahl | 5 | M5 | 3,5 | 2,5 |
| K0707.05X6 | Stahl | 6 | M5 | 3,5 | 2,5 |
| K0707.05X8 | Stahl | 8 | M5 | 3,5 | 2,5 |
| K0707.05X10 | Stahl | 10 | M5 | 3,5 | 2,5 |
| K0707.05X12 | Stahl | 12 | M5 | 3,5 | 2,5 |
| K0707.05X16 | Stahl | 16 | M5 | 3,5 | 2,5 |
| K0707.05X20 | Stahl | 20 | M5 | 3,5 | 2,5 |
| K0707.05X25 | Stahl | 25 | M5 | 3,5 | 2,5 |
| K0707.05X30 | Stahl | 30 | M5 | 3,5 | 2,5 |
| K0707.06X6 | Stahl | 6 | M6 | 4 | 3 |
| K0707.06X8 | Stahl | 8 | M6 | 4 | 3 |

Gewindestifte mit Innensechskant und Kegelkuppe DIN 913 ohne LONG-LOK

Artikelübersicht

| Bestellnummer | Material Grundkörper | L | D1 | D2 | SW |
|---------------|-------------------------|-----|-----|-----|-----|
| K0707.06X10 | Stahl | 10 | M6 | 4 | 3 |
| K0707.06X12 | Stahl | 12 | M6 | 4 | 3 |
| K0707.06X16 | Stahl | 16 | M6 | 4 | 3 |
| K0707.06X20 | Stahl | 20 | M6 | 4 | 3 |
| K0707.06X25 | Stahl | 25 | M6 | 4 | 3 |
| K0707.06X30 | Stahl | 30 | M6 | 4 | 3 |
| K0707.06X35 | Stahl | 35 | M6 | 4 | 3 |
| K0707.06X40 | Stahl | 40 | M6 | 4 | 3 |
| K0707.06X45 | Stahl | 45 | M6 | 4 | 3 |
| K0707.06X50 | Stahl | 50 | M6 | 4 | 3 |
| K0707.06X60 | Stahl | 60 | M6 | 4 | 3 |
| K0707.08X8 | Stahl | 8 | M8 | 5,5 | 4 |
| K0707.08X10 | Stahl | 10 | M8 | 5,5 | 4 |
| K0707.08X12 | Stahl | 12 | M8 | 5,5 | 4 |
| K0707.08X16 | Stahl | 16 | M8 | 5,5 | 4 |
| K0707.08X20 | Stahl | 20 | M8 | 5,5 | 4 |
| K0707.08X25 | Stahl | 25 | M8 | 5,5 | 4 |
| K0707.08X30 | Stahl | 30 | M8 | 5,5 | 4 |
| K0707.08X35 | Stahl | 35 | M8 | 5,5 | 4 |
| K0707.08X40 | Stahl | 40 | M8 | 5,5 | 4 |
| K0707.08X45 | Stahl | 45 | M8 | 5,5 | 4 |
| K0707.08X50 | Stahl | 50 | M8 | 5,5 | 4 |
| K0707.08X60 | Stahl | 60 | M8 | 5,5 | 4 |
| K0707.08X70 | Stahl | 70 | M8 | 5,5 | 4 |
| K0707.08X80 | Stahl | 80 | M8 | 5,5 | 4 |
| K0707.10X10 | Stahl | 10 | M10 | 7 | 5 |
| K0707.10X12 | Stahl | 12 | M10 | 7 | 5 |
| K0707.10X16 | Stahl | 16 | M10 | 7 | 5 |
| K0707.10X20 | Stahl | 20 | M10 | 7 | 5 |
| K0707.10X25 | Stahl | 25 | M10 | 7 | 5 |
| K0707.10X30 | Stahl | 30 | M10 | 7 | 5 |
| K0707.10X35 | Stahl | 35 | M10 | 7 | 5 |
| K0707.10X40 | Stahl | 40 | M10 | 7 | 5 |
| K0707.10X45 | Stahl | 45 | M10 | 7 | 5 |
| K0707.10X50 | Stahl | 50 | M10 | 7 | 5 |
| K0707.10X60 | Stahl | 60 | M10 | 7 | 5 |
| K0707.10X70 | Stahl | 70 | M10 | 7 | 5 |
| K0707.10X80 | Stahl | 80 | M10 | 7 | 5 |
| K0707.10X90 | Stahl | 90 | M10 | 7 | 5 |
| K0707.10X100 | Stahl | 100 | M10 | 7 | 5 |
| K0707.103X5 | Edelstahl | 5 | M3 | 2 | 1,5 |
| K0707.103X6 | Edelstahl | 6 | M3 | 2 | 1,5 |
| K0707.103X8 | Edelstahl | 8 | M3 | 2 | 1,5 |
| K0707.103X10 | Edelstahl | 10 | M3 | 2 | 1,5 |
| K0707.103X12 | Edelstahl | 12 | M3 | 2 | 1,5 |
| K0707.104X5 | Edelstahl | 5 | M4 | 2,5 | 2 |
| K0707.104X6 | Edelstahl | 6 | M4 | 2,5 | 2 |
| K0707.104X8 | Edelstahl | 8 | M4 | 2,5 | 2 |
| K0707.104X10 | Edelstahl | 10 | M4 | 2,5 | 2 |
| K0707.104X12 | Edelstahl | 12 | M4 | 2,5 | 2 |
| K0707.104X16 | Edelstahl | 16 | M4 | 2,5 | 2 |
| K0707.104X20 | Edelstahl | 20 | M4 | 2,5 | 2 |
| K0707.105X5 | Edelstahl | 5 | M5 | 3,5 | 2,5 |
| K0707.105X6 | Edelstahl | 6 | M5 | 3,5 | 2,5 |
| K0707.105X8 | Edelstahl | 8 | M5 | 3,5 | 2,5 |
| K0707.105X10 | Edelstahl | 10 | M5 | 3,5 | 2,5 |
| K0707.105X12 | Edelstahl | 12 | M5 | 3,5 | 2,5 |
| K0707.105X16 | Edelstahl | 16 | M5 | 3,5 | 2,5 |
| K0707.105X20 | Edelstahl | 20 | M5 | 3,5 | 2,5 |
| K0707.105X25 | Edelstahl | 25 | M5 | 3,5 | 2,5 |
| K0707.105X30 | Edelstahl | 30 | M5 | 3,5 | 2,5 |
| K0707.106X6 | Edelstahl | 6 | M6 | 4 | 3 |

Gewindestifte mit Innensechskant und Kegelkuppe DIN 913 ohne LONG-LOK

Artikelübersicht

| Bestellnummer | Material Grundkörper | L | D1 | D2 | SW |
|---------------|-------------------------|----|-----|-----|----|
| K0707.106X8 | Edelstahl | 8 | M6 | 4 | 3 |
| K0707.106X10 | Edelstahl | 10 | M6 | 4 | 3 |
| K0707.106X12 | Edelstahl | 12 | M6 | 4 | 3 |
| K0707.106X16 | Edelstahl | 16 | M6 | 4 | 3 |
| K0707.106X20 | Edelstahl | 20 | M6 | 4 | 3 |
| K0707.106X25 | Edelstahl | 25 | M6 | 4 | 3 |
| K0707.106X30 | Edelstahl | 30 | M6 | 4 | 3 |
| K0707.106X35 | Edelstahl | 35 | M6 | 4 | 3 |
| K0707.106X40 | Edelstahl | 40 | M6 | 4 | 3 |
| K0707.108X8 | Edelstahl | 8 | M8 | 5,5 | 4 |
| K0707.108X10 | Edelstahl | 10 | M8 | 5,5 | 4 |
| K0707.108X12 | Edelstahl | 12 | M8 | 5,5 | 4 |
| K0707.108X16 | Edelstahl | 16 | M8 | 5,5 | 4 |
| K0707.108X20 | Edelstahl | 20 | M8 | 5,5 | 4 |
| K0707.108X25 | Edelstahl | 25 | M8 | 5,5 | 4 |
| K0707.108X30 | Edelstahl | 30 | M8 | 5,5 | 4 |
| K0707.108X35 | Edelstahl | 35 | M8 | 5,5 | 4 |
| K0707.108X40 | Edelstahl | 40 | M8 | 5,5 | 4 |
| K0707.108X45 | Edelstahl | 45 | M8 | 5,5 | 4 |
| K0707.108X50 | Edelstahl | 50 | M8 | 5,5 | 4 |
| K0707.110X10 | Edelstahl | 10 | M10 | 7 | 5 |
| K0707.110X12 | Edelstahl | 12 | M10 | 7 | 5 |
| K0707.110X16 | Edelstahl | 16 | M10 | 7 | 5 |
| K0707.110X20 | Edelstahl | 20 | M10 | 7 | 5 |
| K0707.110X25 | Edelstahl | 25 | M10 | 7 | 5 |
| K0707.110X30 | Edelstahl | 30 | M10 | 7 | 5 |
| K0707.110X35 | Edelstahl | 35 | M10 | 7 | 5 |
| K0707.110X40 | Edelstahl | 40 | M10 | 7 | 5 |
| K0707.110X45 | Edelstahl | 45 | M10 | 7 | 5 |
| K0707.110X50 | Edelstahl | 50 | M10 | 7 | 5 |