

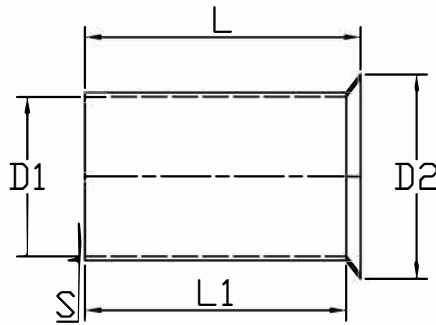
# Non-Insulated Cord-End Sleeve



## Specification

Terminal Material	Tin Plated Copper Tube
Insulation Material	Non-insulated
Max Current	30 A
Wire Range	14 AWG

## Drawing



L	10 mm
D1	2.3 mm
D2	3.4 mm
L1	9 mm
S	0.15 mm

Art. Nr.  
RND 465-01371