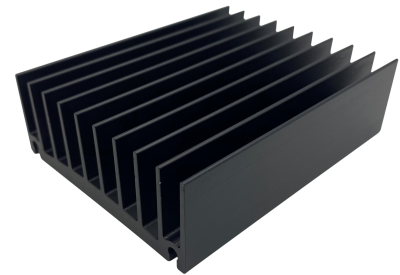


Heat Sink

Features

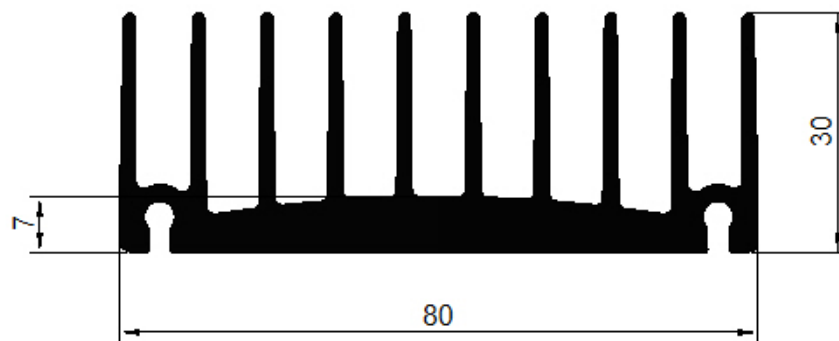
- RoHS compliant
- Tolerances in accordance with BS EN 12020 / BS EN 755
- Excellent performance for a one piece extrusion
- Ideal with LED, Traction, Hi-Fi and UPS applications



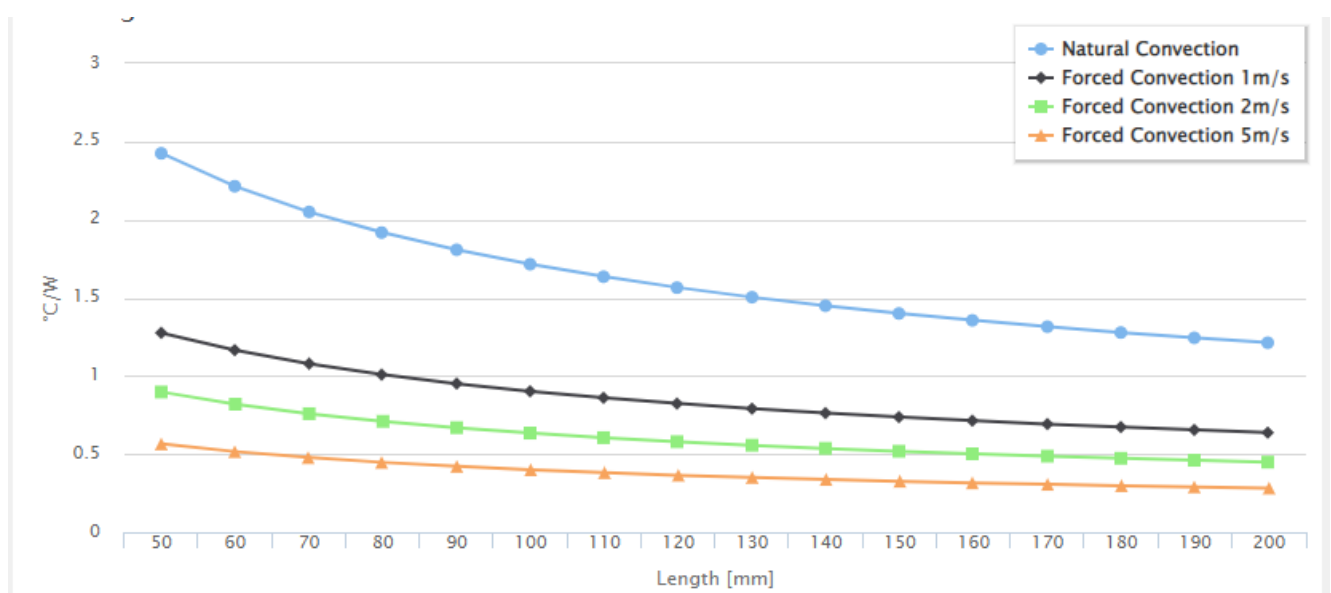
Specification

Finish	Black Anodise
Material	Aluminium Alloy
Height	30 mm
Width	80 mm
Length	100 mm
Tolerance on Length	+/- 0.5 mm
Thermal Resistance	1.7 W/°C

Drawing



Heating



Art. Nr.
RND 460-00157