

GN 113.8 | Ball lock pins

Stainless steel



- 1
- 2
- 3
- 4
- 5
- 6
- 7
- 8
- 9
- 10
- 11
- 12
- 13
- 14
- 15
- 16
- 17
- 18

PIN AND PUSH BUTTON

AISI 630 hardened stainless steel.

BALLS

AISI 420C stainless steel.

SPRING

AISI 631 stainless steel.

HANDLE

Glass-fibre reinforced polyamide based (PA) technopolymer, black colour, provided with holes for security ring.

WORKING TEMPERATURE

From -30°C to +80°C.

FEATURES AND APPLICATIONS

GN 113.8 ball lock pins are generally used for quick mounting between components or parts to be machined, in particular for elements which need to be removed and reset continuously.

ACCESSORIES ON REQUEST

To optimise the use of these ball lock pins, have been designed:

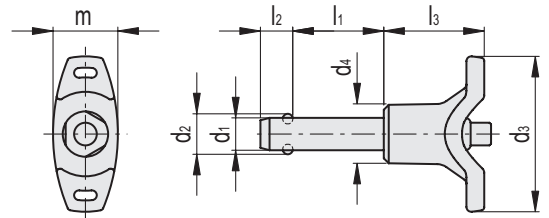
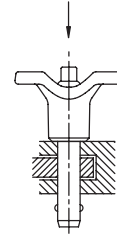
- ball chains GN 111 (see page 611);
- retaining cables GN 111.2 (see page 612);
- spiral retaining cables GN 111.4 (see page 613).

INSTRUCTIONS OF USE

By pressing the push button the two balls are freed and the pin can be pulled-out or inserted.



Application example



Code	Description	d1-0.04-0.08	d2	d3	d4	l1+0.6	l2±0.2	l3	m	Mounting hole H11	Double sided shearing force [KN]	⚖️
GN.11515	GN 113.8-5-10	5	5.5	40	13.5	10	6	25	15.5	5	24	15
GN.11516	GN 113.8-5-15	5	5.5	40	13.5	15	6	25	15.5	5	24	16
GN.11517	GN 113.8-5-20	5	5.5	40	13.5	20	6	25	15.5	5	24	16
GN.11518	GN 113.8-5-25	5	5.5	40	13.5	25	6	25	15.5	5	24	17
GN.11519	GN 113.8-5-30	5	5.5	40	13.5	30	6	25	15.5	5	24	18
GN.11520	GN 113.8-6-10	6	7	40	13.5	10	7.1	25	15.5	6	35	15
GN.11521	GN 113.8-6-15	6	7	40	13.5	15	7.1	25	15.5	6	35	15
GN.11522	GN 113.8-6-20	6	7	40	13.5	20	7.1	25	15.5	6	35	20
GN.11523	GN 113.8-6-25	6	7	40	13.5	25	7.1	25	15.5	6	21	20
GN.11524	GN 113.8-6-30	6	7	40	13.5	30	7.1	25	15.5	6	21	20
GN.11525	GN 113.8-6-40	6	7	40	13.5	40	7.1	25	15.5	6	35	25
GN.11526	GN 113.8-8-20	8	9.5	48	18	20	8.2	31	20.5	8	63	30
GN.11527	GN 113.8-8-25	8	9.5	48	18	25	8.2	31	20.5	8	63	35
GN.11528	GN 113.8-8-30	8	9.5	48	18	30	8.2	31	20.5	8	63	40
GN.11529	GN 113.8-8-40	8	9.5	48	18	40	8.2	31	20.5	8	63	50
GN.11530	GN 113.8-8-50	8	9.5	48	18	50	8.2	31	20.5	8	63	100
GN.11531	GN 113.8-10-20	10	12	48	18	20	9.6	31	20.5	10	100	40
GN.11532	GN 113.8-10-25	10	12	48	18	25	9.6	31	20.5	10	100	40
GN.11533	GN 113.8-10-30	10	12	48	18	30	9.6	31	20.5	10	100	50
GN.11534	GN 113.8-10-40	10	12	48	18	40	9.6	31	20.5	10	100	60
GN.11535	GN 113.8-10-50	10	12	48	18	50	9.6	31	20.5	10	100	70
GN.11536	GN 113.8-12-25	12	14.5	58	24	25	10.6	36.5	27.5	12	144	94
GN.11537	GN 113.8-12-30	12	14.5	58	24	30	10.6	36.5	27.5	12	144	100
GN.11538	GN 113.8-12-40	12	14.5	58	24	40	10.6	36.5	27.5	12	144	109
GN.11539	GN 113.8-12-50	12	14.5	58	24	50	10.6	36.5	27.5	12	144	120
GN.11540	GN 113.8-12-60	12	14.5	58	24	60	10.6	36.5	27.5	12	144	120
GN.11541	GN 113.8-16-30	16	19	58	24	30	14	36.5	27.5	16	257	140
GN.11542	GN 113.8-16-40	16	19	58	24	40	14	36.5	27.5	16	257	160
GN.11543	GN 113.8-16-50	16	19	58	24	50	14	36.5	27.5	16	257	180
GN.11544	GN 113.8-16-60	16	19	58	24	60	14	36.5	27.5	16	257	180

Indexing and positioning elements