

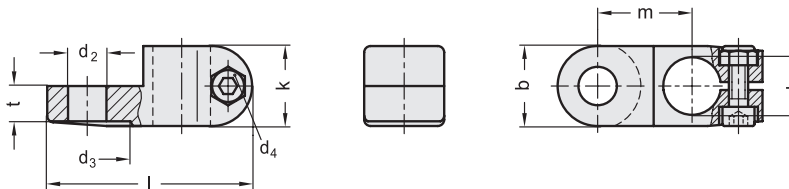
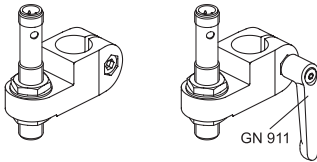
MATERIAL

Aluminium, epoxy resin coating, RAL 9005 black colour, matte finish.
AISI 304 stainless steel screw and nut.

FEATURES AND APPLICATIONS

The assembly hole of GN 273.4 sensor holders allows an excellent match with tubes GN 990 (see page 1778).

The clamping screw d_4 may be replaced by clamping kit GN 911 (see page 1782).



| Code | Description | b | d1 | d2 | d4 | d3 | k | l | m | t-0.5 | d4 Clamping kit | ⚖ |
|----------|-----------------------|----|----|----|----|----|----|----|------|-------|--------------------|----|
| GN.57606 | GN 273.4-B12-B12-2-SW | 25 | 12 | 12 | M6 | 27 | 25 | 64 | 29.5 | 11 | GN 911-M6-22 | 60 |
| GN.57626 | GN 273.4-B14-B12-2-SW | 25 | 14 | 12 | M6 | 27 | 25 | 64 | 29.5 | 11 | GN 911-M6-22 | 60 |
| GN.57646 | GN 273.4-B16-B12-2-SW | 25 | 16 | 12 | M6 | 27 | 25 | 64 | 29.5 | 11 | GN 911-M6-22 | 60 |
| GN.57666 | GN 273.4-B18-B12-2-SW | 25 | 18 | 12 | M6 | 27 | 25 | 64 | 29.5 | 11 | GN 911-M6-22 | 60 |
| GN.57616 | GN 273.4-B12-B18-2-SW | 25 | 12 | 18 | M6 | 27 | 25 | 64 | 29.5 | 11 | GN 911-M6-22 | 60 |
| GN.57636 | GN 273.4-B14-B18-2-SW | 25 | 14 | 18 | M6 | 27 | 25 | 64 | 29.5 | 11 | GN 911-M6-22 | 60 |
| GN.57656 | GN 273.4-B16-B18-2-SW | 25 | 16 | 18 | M6 | 27 | 25 | 64 | 29.5 | 11 | GN 911-M6-22 | 60 |
| GN.57676 | GN 273.4-B18-B18-2-SW | 25 | 18 | 18 | M6 | 27 | 25 | 64 | 29.5 | 11 | GN 911-M6-22 | 60 |

