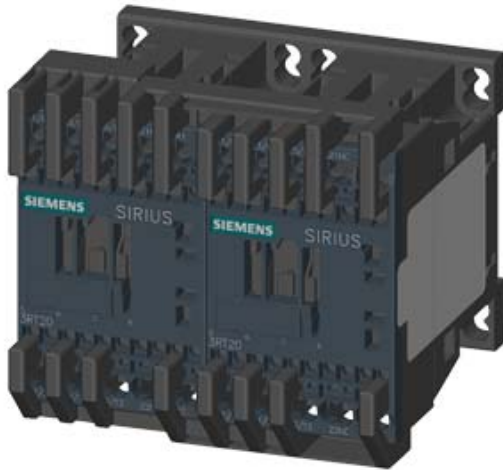


REV. COMB. AC3, 3KW/400V AC24V, 50/60 HZ, 3-POLE, SZ S00 SPRING-LOADED TERMINAL ELECTR. AND MECH. INTERLOCK



product brand name	SIRIUS
Product designation	reversing contactor assembly 3RA23
<b>Manufacturer article number</b>	
<ul style="list-style-type: none"> <li>• 1 of the supplied contactor</li> <li>• 2 of the supplied contactor</li> <li>• of the supplied RH assembly kit</li> </ul>	<a href="#">3RT2015-2AB02</a> <a href="#">3RT2015-2AB02</a> <a href="#">3RA2913-2AA2</a>

### General technical data:

<b>Insulation voltage</b>		
<ul style="list-style-type: none"> <li>• with degree of pollution 3 Rated value</li> </ul>	V	690
<b>Degree of pollution</b>		3
<b>Shock resistance</b>		9.8g / 5 ms and 5.9g / 10 ms
<b>Surge voltage resistance Rated value</b>	kV	6
<b>Mechanical service life (switching cycles)</b>		
<ul style="list-style-type: none"> <li>• of the contactor typical</li> <li>• of the contactor with added auxiliary switch block typical</li> </ul>		10 000 000 10 000 000
<b>Protection class IP</b>		
<ul style="list-style-type: none"> <li>• on the front</li> </ul>		IP20
<b>Equipment marking</b>		
<ul style="list-style-type: none"> <li>• acc. to DIN EN 81346-2</li> </ul>		Q

### Main circuit:

<b>Number of poles for main current circuit</b>		3
<b>Number of NC contacts for main contacts</b>		0
<b>Number of NO contacts for main contacts</b>		3
<b>Operating voltage</b>		

<ul style="list-style-type: none"> <li>• at AC-3 Rated value maximum</li> </ul>	V	690
<b>Operating current</b>		
<ul style="list-style-type: none"> <li>• at AC-1 <ul style="list-style-type: none"> <li>— at 400 V at ambient temperature 40 °C Rated value</li> <li>— at 400 V at ambient temperature 60 °C Rated value</li> </ul> </li> <li>• at AC-2 at 400 V Rated value</li> <li>• at AC-3 <ul style="list-style-type: none"> <li>— at 400 V Rated value</li> </ul> </li> <li>• at AC-4 at 400 V Rated value</li> </ul>	A	18
	A	16
	A	7
	A	7
	A	6.5
<b>Operating current with 1 current path</b>		
<ul style="list-style-type: none"> <li>• at DC-1 <ul style="list-style-type: none"> <li>— at 24 V Rated value</li> <li>— at 110 V Rated value</li> </ul> </li> <li>• at DC-3 at DC-5 <ul style="list-style-type: none"> <li>— at 24 V Rated value</li> <li>— at 110 V Rated value</li> </ul> </li> </ul>	A	15
	A	1.5
	A	15
	A	0.1
<b>Operating current with 2 current paths in series</b>		
<ul style="list-style-type: none"> <li>• at DC-1 <ul style="list-style-type: none"> <li>— at 24 V Rated value</li> <li>— at 110 V Rated value</li> </ul> </li> <li>• at DC-3 at DC-5 <ul style="list-style-type: none"> <li>— at 110 V Rated value</li> <li>— at 24 V Rated value</li> </ul> </li> </ul>	A	15
	A	8.4
	A	0.25
	A	15
<b>Operating current with 3 current paths in series</b>		
<ul style="list-style-type: none"> <li>• at DC-1 <ul style="list-style-type: none"> <li>— at 24 V Rated value</li> <li>— at 110 V Rated value</li> </ul> </li> <li>• at DC-3 at DC-5 <ul style="list-style-type: none"> <li>— at 110 V Rated value</li> <li>— at 24 V Rated value</li> </ul> </li> </ul>	A	15
	A	15
	A	15
	A	15
<b>Operating power</b>		
<ul style="list-style-type: none"> <li>• at AC-2 at 400 V Rated value</li> <li>• at AC-4 at 400 V Rated value</li> </ul>	kW	3
	kW	3
<b>Operating power</b>		
<ul style="list-style-type: none"> <li>• at AC-3 <ul style="list-style-type: none"> <li>— at 400 V Rated value</li> <li>— at 500 V Rated value</li> <li>— at 690 V Rated value</li> </ul> </li> </ul>	kW	3
	kW	3.5
	kW	4
<b>Operating frequency</b>		
<ul style="list-style-type: none"> <li>• at AC-3 maximum</li> </ul>	1/h	750

No-load switching frequency	1/h	1 500
-----------------------------	-----	-------

### Control circuit/ Control:

Type of voltage of the control supply voltage		AC
Control supply voltage 1 with AC		
<ul style="list-style-type: none"> <li>at 50 Hz Rated value</li> </ul>	V	24
<ul style="list-style-type: none"> <li>at 60 Hz Rated value</li> </ul>	V	24
Operating range factor control supply voltage rated value of the magnet coil with AC		
<ul style="list-style-type: none"> <li>at 50 Hz</li> </ul>		0.8 ... 1.1
<ul style="list-style-type: none"> <li>at 60 Hz</li> </ul>		0.85 ... 1.1

### Auxiliary circuit:

Number of NC contacts		
<ul style="list-style-type: none"> <li>for auxiliary contacts</li> </ul>		
<ul style="list-style-type: none"> <li>— per direction of rotation</li> </ul>		0
<ul style="list-style-type: none"> <li>— instantaneous contact</li> </ul>		0
<ul style="list-style-type: none"> <li>— lagging switching</li> </ul>		0
Number of NO contacts		
<ul style="list-style-type: none"> <li>for auxiliary contacts</li> </ul>		
<ul style="list-style-type: none"> <li>— per direction of rotation</li> </ul>		0
<ul style="list-style-type: none"> <li>— instantaneous contact</li> </ul>		0
<ul style="list-style-type: none"> <li>— leading contact</li> </ul>		0
Product expansion Auxiliary switch		Yes
Operating current of the auxiliary contacts at AC-12 maximum	A	10
Operating current of the auxiliary contacts at AC-15		
<ul style="list-style-type: none"> <li>at 230 V</li> </ul>	A	6
<ul style="list-style-type: none"> <li>at 400 V</li> </ul>	A	3
Operating current of the auxiliary contacts at DC-13		
<ul style="list-style-type: none"> <li>at 24 V</li> </ul>	A	10
<ul style="list-style-type: none"> <li>at 60 V</li> </ul>	A	2
<ul style="list-style-type: none"> <li>at 110 V</li> </ul>	A	1
<ul style="list-style-type: none"> <li>at 220 V</li> </ul>	A	0.3
Contact reliability of the auxiliary contacts		< 1 error per 100 million operating cycles

### UL/CSA ratings:

Full-load current (FLA) for three-phase AC motor		
<ul style="list-style-type: none"> <li>at 480 V Rated value</li> </ul>	A	4.8
<ul style="list-style-type: none"> <li>at 600 V Rated value</li> </ul>	A	6.1
yielded mechanical performance [hp]		
<ul style="list-style-type: none"> <li>for single-phase AC motor at 110/120 V Rated value</li> </ul>	metric hp	0.25

- for single-phase AC motor at 230 V Rated value
- for three-phase AC motor at 200/208 V Rated value
- for three-phase AC motor at 220/230 V Rated value
- for three-phase AC motor at 460/480 V Rated value
- for three-phase AC motor at 575/600 V Rated value

metric hp	0.75
metric hp	1.5
metric hp	2
metric hp	3
metric hp	5
<b>Contact rating of the auxiliary contacts acc. to UL</b>	
A600 / Q600	

#### Short-circuit:

##### Design of the fuse link

- for short-circuit protection of the main circuit
  - with type of assignment 1 required
  - with type of assignment 2 required
- for short-circuit protection of the auxiliary switch required

gL/gG LV HRC 3NA, DIAZED 5SB, NEOZED 5SE:  
35 A

gL/gG LV HRC 3NA, DIAZED 5SB, NEOZED 5SE:  
20 A

fuse gL/gG: 10 A

#### Installation/ mounting/ dimensions:

<b>mounting position</b>		+/-180° rotation possible on vertical mounting surface; can be tilted forward and backward by +/- 22.5° on vertical mounting surface
<b>Mounting type</b>		screw and snap-on mounting onto 35 mm standard mounting rail
<b>Height</b>	mm	84
<b>Width</b>	mm	90
<b>Depth</b>	mm	83
<b>Required spacing</b>		
• with side-by-side mounting		
— forwards	mm	6
— Backwards	mm	0
— upwards	mm	6
— downwards	mm	6
— at the side	mm	6
• for grounded parts		
— forwards	mm	6
— Backwards	mm	0
— upwards	mm	6
— at the side	mm	6
— downwards	mm	6
• for live parts		

— forwards	mm	6
— Backwards	mm	0
— upwards	mm	6
— downwards	mm	6
— at the side	mm	6

#### Connections/ Terminals:

<b>Type of electrical connection</b>		
• for main current circuit		spring-loaded terminals
• for auxiliary and control current circuit		spring-loaded terminals
<b>Type of connectable conductor cross-section</b>		
• for main contacts		
— single or multi-stranded		2x (0,5 ... 4 mm <sup>2</sup> )
— finely stranded with core end processing		2x (0.5 ... 2.5 mm <sup>2</sup> )
— finely stranded without core end processing		2x (0.5 ... 2.5 mm <sup>2</sup> )
• for AWG conductors for main contacts		1x (20 ... 12)
• for auxiliary contacts		
— single or multi-stranded		2x (0,5 ... 2,5 mm <sup>2</sup> )
— finely stranded with core end processing		2x (0.5 ... 1.5 mm <sup>2</sup> )
— finely stranded without core end processing		2x (0.5 ... 1.5 mm <sup>2</sup> )
• for AWG conductors for auxiliary contacts		2x (20 ... 14)
<b>Apparent pick-up power of the magnet coil with AC</b>		
• at 50 Hz	V·A	27

#### Safety related data:

<b>B10 value with high demand rate acc. to SN 31920</b>		1 000 000
<b>Proportion of dangerous failures</b>		
• with low demand rate acc. to SN 31920	%	40
• with high demand rate acc. to SN 31920	%	75
<b>Failure rate [FIT] with low demand rate acc. to SN 31920</b>	FIT	100
<b>T1 value for proof test interval or service life acc. to IEC 61508</b>	y	20
<b>Protection against electrical shock</b>		finger-safe

#### Mechanical data:

<b>Size of contactor</b>		S00
--------------------------	--	-----





#### Communication/ Protocol:

<b>Product function Bus communication</b>		No
<b>Protocol is supported</b>		
• AS-interface protocol		No
<b>Product function Control circuit interface with IO link</b>		No

### Ambient conditions:

Installation altitude at height above sea level maximum	m	2 000
Ambient temperature		
• during operation	°C	-25 ... +60
• during storage	°C	-55 ... +80

### Certificates/ approvals:

General Product Approval	Declaration of Conformity	Test Certificates
 CSA  UL	 EAC  CE EG-Konf.	<a href="#">Special Test Certificate</a> <a href="#">Type Test Certificates/Test Report</a>

### Shipping Approval



### Shipping Approval

### other



### Further information

#### Information- and Downloadcenter (Catalogs, Brochures,...)

<http://www.siemens.com/industrial-controls/catalogs>

#### Industry Mall (Online ordering system)

<http://www.siemens.com/industrymall>

#### Cax online generator

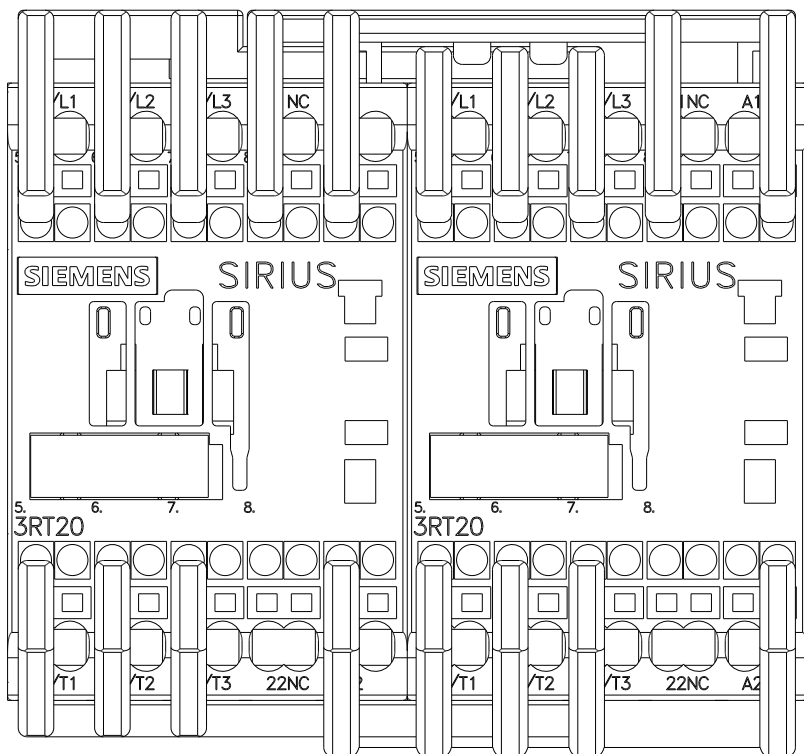
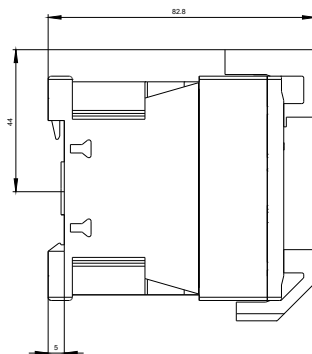
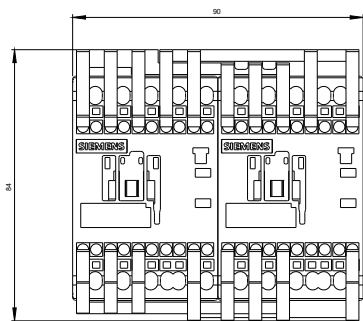
<http://support.automation.siemens.com/WW/CAXorder/default.aspx?lang=en&mlfb=3RA23158XB302AB0>

#### Service&Support (Manuals, Certificates, Characteristics, FAQs,...)

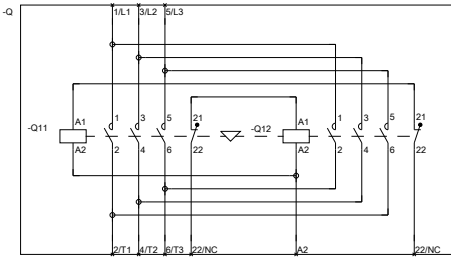
<http://support.automation.siemens.com/WW/view/en/3RA23158XB302AB0/all>

#### Image database (product images, 2D dimension drawings, 3D models, device circuit diagrams, EPLAN macros, ...)

[http://www.automation.siemens.com/bilddb/cax\\_de.aspx?mlfb=3RA23158XB302AB0&lang=en](http://www.automation.siemens.com/bilddb/cax_de.aspx?mlfb=3RA23158XB302AB0&lang=en)



WENDEKOMBINATION BGR. S00



REVERSING COMB. SZ S00

last modified:

11.03.2015